

NOCO®
Since 1914

V18.5

About **NOCO**.

The NOCO Company was founded in 1914 in Cleveland, Ohio. Joseph Henry Nook, a local tire and battery distributor, set out to develop a product that would prevent battery corrosion. After several hundred different formulations, Mr. Nook began commercially manufacturing and distributing the world's first Battery Corrosion Preventative which he called NCP2. NCP2 is an acronym for “**No Corrosion Product**” which is applied in “**2 Steps**”. The NCP2 brand quickly became a household name in every major battery and automotive shop. For over 100 years, the NCP2 brand has been preventing battery corrosion on more than one billion vehicles and applications worldwide.

Since then, NOCO has grown into a leading designer and manufacturer of innovative consumer-based battery and power products.

The NOCO Company

30339 Diamond Parkway, #102

Glenwillow, OH 44139

United States Of America

800.456.6626

no.co



NOCO®
Since 1914



genius BOOST HD™
15700 joules⁹⁵
GB70
12V 2000A



BOOST™

Ultra**Safe**® Lithium
Jump Starters

Safely jump start
a dead battery
in seconds.®

Safe, powerful jump starting.

Designed for most vehicles including ATVs, lawn mowers, motorcycles, cars, trucks, boats, RVs, tractors, equipment, and more. The new, more powerful models are for diesel and high-displacement engines, but are still safe on engines of all sizes.

GB20

12V 400A

4650joules^{3S}

4.0L Gas Only



Sport & Car

GB40

12V 1000A

7000joules^{3S}

6.0L Gas **3.0L** Diesel



Car & Truck

GB70

12V 2000A

15700joules^{3S}

8.0L+ Gas **6.0L** Diesel



Heavy Duty

NOCO Patented Technology

Visit no.co/patents. Multiple domestic and international patents pending.

joules = Power (w) x Time (sec)

joules^{3S} is the actual amount of power delivered over 3 seconds.

GB150

12V 4000A

22500joules^{3S}

10.0L+ Gas & Diesel



Professional

GB500

12V & 24V 20000A

80000joules^{3S}

Class 8+/CE Gas & Diesel



Commercial

UltraSafe Lithium
Jump Starters

BOOST
genius



GB500

NOCO
BOOST MAX

25.2V

12V

60000

24V

F63

A close-up, low-angle shot of the front of a yellow construction vehicle, likely a bulldozer. The image focuses on the large, black, treaded tire and the heavy-duty black fender above it. The yellow body of the machine is visible in the background, with black metal safety rails. The text "Massive power." is overlaid in white, bold, sans-serif font.

Massive power.

LED

Ultra-bright LEDs.

GB20 Dual LED 100 Lumen

GB40 Dual LED 100 Lumen

GB70 8 LED 400 Lumen

GB150 10 LED 500 Lumen

GB500 Dual LED 2200 Lumen



7 light modes
including flashlight and
emergency strobe.



Charge smart phones,
tablets, GPS and more.



USB

2.1A USB OUT

+

2.1A Micro USB IN

(USB In Excludes GB500)

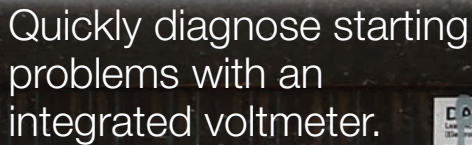
A black and red NOCO genius BOOST HD GB70 jump starter is shown resting on a vehicle tire. The device has a digital display and several status LEDs. Red and black cables are connected to the jump starter's terminals. A black hose with a tire pump is also connected to the jump starter, with the pump head positioned near the tire's valve stem. The background shows the tire tread and a white line on the asphalt.

12V power port.

For tire pumps,
inverters, lights +
more.

Included in
GB70, GB150 & GB500.

Exclusively on GB150 & GB500.



Lee Acid Battery Co. - Zinc Acid, Sulfuric Acid

(He polyte), Le C-200, 20 Arsenic.

the practice goes, practice makes perfect. The more you practice, the better you get.

And what about the future?

三、**结论**

1997, 1998, 1999, 2000, 2001, 2002, 2003, 2004, 2005, 2006, 2007, 2008, 2009, 2010, 2011, 2012, 2013, 2014, 2015, 2016, 2017, 2018, 2019, 2020, 2021, 2022, 2023, 2024, 2025, 2026, 2027, 2028, 2029, 2030, 2031, 2032, 2033, 2034, 2035, 2036, 2037, 2038, 2039, 2040, 2041, 2042, 2043, 2044, 2045, 2046, 2047, 2048, 2049, 2050, 2051, 2052, 2053, 2054, 2055, 2056, 2057, 2058, 2059, 2060, 2061, 2062, 2063, 2064, 2065, 2066, 2067, 2068, 2069, 2070, 2071, 2072, 2073, 2074, 2075, 2076, 2077, 2078, 2079, 2080, 2081, 2082, 2083, 2084, 2085, 2086, 2087, 2088, 2089, 2090, 2091, 2092, 2093, 2094, 2095, 2096, 2097, 2098, 2099, 2100, 2101, 2102, 2103, 2104, 2105, 2106, 2107, 2108, 2109, 2110, 2111, 2112, 2113, 2114, 2115, 2116, 2117, 2118, 2119, 2120, 2121, 2122, 2123, 2124, 2125, 2126, 2127, 2128, 2129, 2130, 2131, 2132, 2133, 2134, 2135, 2136, 2137, 2138, 2139, 2140, 2141, 2142, 2143, 2144, 2145, 2146, 2147, 2148, 2149, 2150, 2151, 2152, 2153, 2154, 2155, 2156, 2157, 2158, 2159, 2160, 2161, 2162, 2163, 2164, 2165, 2166, 2167, 2168, 2169, 2170, 2171, 2172, 2173, 2174, 2175, 2176, 2177, 2178, 2179, 2180, 2181, 2182, 2183, 2184, 2185, 2186, 2187, 2188, 2189, 2190, 2191, 2192, 2193, 2194, 2195, 2196, 2197, 2198, 2199, 2200, 2201, 2202, 2203, 2204, 2205, 2206, 2207, 2208, 2209, 2210, 2211, 2212, 2213, 2214, 2215, 2216, 2217, 2218, 2219, 2220, 2221, 2222, 2223, 2224, 2225, 2226, 2227, 2228, 2229, 2230, 2231, 2232, 2233, 2234, 2235, 2236, 2237, 2238, 2239, 2240, 2241, 2242, 2243, 2244, 2245, 2246, 2247, 2248, 2249, 2250, 2251, 2252, 2253, 2254, 2255, 2256, 2257, 2258, 2259, 2260, 2261, 2262, 2263, 2264, 2265, 2266, 2267, 2268, 2269, 2270, 2271, 2272, 2273, 2274, 2275, 2276, 2277, 2278, 2279, 2280, 2281, 2282, 2283, 2284, 2285, 2286, 2287, 2288, 2289, 2290, 2291, 2292, 2293, 2294, 2295, 2296, 2297, 2298, 2299, 2300, 2301, 2302, 2303, 2304, 2305, 2306, 2307, 2308, 2309, 2310, 2311, 2312, 2313, 2314, 2315, 2316, 2317, 2318, 2319, 2320, 2321, 2322, 2323, 2324, 2325, 2326, 2327, 2328, 2329, 2330, 2331, 2332, 2333, 2334, 2335, 2336, 2337, 2338, 2339, 2340, 2341, 2342, 2343, 2344, 2345, 2346, 2347, 2348, 2349, 2350, 2351, 2352, 2353, 2354, 2355, 2356, 2357, 2358, 2359, 2360, 2361, 2362, 2363, 2364, 2365, 2366, 2367, 2368, 2369, 2370, 2371, 2372, 2373, 2374, 2375, 2376, 2377, 2378, 2379, 2380, 2381, 2382, 2383, 2384, 2385, 2386, 2387, 2388, 2389, 2390, 2391, 2392, 2393, 2394, 2395, 2396, 2397, 2398, 2399, 2400, 2401, 2402, 2403, 2404, 2405, 2406, 2407, 2408, 2409, 2410, 2411, 2412, 2413, 2414, 2415, 2416, 2417, 2418, 2419, 2420, 2421, 2422, 2423, 2424, 2425, 2426, 2427, 2428, 2429, 2430, 2431, 2432, 2433, 2434, 2435, 2436, 2437, 2438, 2439, 2440, 2441, 2442, 2443, 2444, 2445, 2446, 2447, 2448, 2449, 2450, 2451, 2452, 2453, 2454, 2455, 2456, 2457, 2458, 2459, 2460, 2461, 2462, 2463, 2464, 2465, 2466, 2467, 2468, 2469, 2470, 2471, 2472, 2473, 2474, 2475, 2476, 2477, 2478, 2479, 2480, 2481, 2482, 2483, 2484, 2485, 2486, 2487, 2488, 2489, 2490, 2491, 2492, 2493, 2494, 2495, 2496, 2497, 2498, 2499, 2500, 2501, 2502, 2503, 2504, 2505, 2506, 2507, 2508, 2509, 2510, 2511, 2512, 2513, 2514, 2515, 2516, 2517, 2518, 2519, 2520, 2521, 2522, 2523, 2524, 2525, 2526, 2527, 2528, 2529, 2530, 2531, 2532, 2533, 2534, 2535, 2536, 2537, 2538, 2539, 2540, 2541, 2542, 2543, 2544, 2545, 2546, 2547, 2548, 2549, 2550, 2551, 2552, 2553, 2554, 2555, 2556, 2557, 2558, 2559, 2560, 2561, 2562, 2563, 2564, 2565, 2566, 2567, 2568, 2569, 2570, 2571, 2572, 2573, 2574, 2575, 2576, 2577, 2578, 2579, 2580, 2581, 2582, 2583, 2584, 2585, 2586, 2587, 2588, 2589, 2590, 2591, 2592, 2593, 2594, 2595, 2596, 2597, 2598, 2599, 2600, 2601, 2602, 2603, 2604, 2605, 2606, 2607, 2608, 2609, 2610, 2611, 2612, 2613, 2614, 2615, 2616, 2617, 2618, 2619, 2620, 2621, 2622, 2623, 2624, 2625, 2626, 2627, 2628, 2629, 2630, 2631, 2632, 2633, 2634, 2635, 2636, 2637, 2638, 2639, 2640, 2641, 2642, 2643, 2644, 2645, 2646, 2647, 2648, 2649, 2650, 2651, 2652, 2653, 2654, 2655, 2656, 2657, 2658, 2659, 2660, 2661, 2662, 2663, 2664, 2665, 2666, 2667, 2668, 2669, 2670, 2671, 2672, 2673, 2674, 2675, 2676, 2677, 2678, 26

Fig. 2. The effect of the concentration of the solution of the monomer on the rate of polymerization. The concentration of the monomer was 0.01, 0.02, 0.03, 0.04, 0.05, 0.06, 0.07, 0.08, 0.09, 0.10, 0.12, 0.14, 0.16, 0.18, 0.20, 0.22, 0.24, 0.26, 0.28, 0.30, 0.32, 0.34, 0.36, 0.38, 0.40, 0.42, 0.44, 0.46, 0.48, 0.50, 0.52, 0.54, 0.56, 0.58, 0.60, 0.62, 0.64, 0.66, 0.68, 0.70, 0.72, 0.74, 0.76, 0.78, 0.80, 0.82, 0.84, 0.86, 0.88, 0.90, 0.92, 0.94, 0.96, 0.98, 1.00, 1.02, 1.04, 1.06, 1.08, 1.10, 1.12, 1.14, 1.16, 1.18, 1.20, 1.22, 1.24, 1.26, 1.28, 1.30, 1.32, 1.34, 1.36, 1.38, 1.40, 1.42, 1.44, 1.46, 1.48, 1.50, 1.52, 1.54, 1.56, 1.58, 1.60, 1.62, 1.64, 1.66, 1.68, 1.70, 1.72, 1.74, 1.76, 1.78, 1.80, 1.82, 1.84, 1.86, 1.88, 1.90, 1.92, 1.94, 1.96, 1.98, 2.00, 2.02, 2.04, 2.06, 2.08, 2.10, 2.12, 2.14, 2.16, 2.18, 2.20, 2.22, 2.24, 2.26, 2.28, 2.30, 2.32, 2.34, 2.36, 2.38, 2.40, 2.42, 2.44, 2.46, 2.48, 2.50, 2.52, 2.54, 2.56, 2.58, 2.60, 2.62, 2.64, 2.66, 2.68, 2.70, 2.72, 2.74, 2.76, 2.78, 2.80, 2.82, 2.84, 2.86, 2.88, 2.90, 2.92, 2.94, 2.96, 2.98, 3.00, 3.02, 3.04, 3.06, 3.08, 3.10, 3.12, 3.14, 3.16, 3.18, 3.20, 3.22, 3.24, 3.26, 3.28, 3.30, 3.32, 3.34, 3.36, 3.38, 3.40, 3.42, 3.44, 3.46, 3.48, 3.50, 3.52, 3.54, 3.56, 3.58, 3.60, 3.62, 3.64, 3.66, 3.68, 3.70, 3.72, 3.74, 3.76, 3.78, 3.80, 3.82, 3.84, 3.86, 3.88, 3.90, 3.92, 3.94, 3.96, 3.98, 4.00, 4.02, 4.04, 4.06, 4.08, 4.10, 4.12, 4.14, 4.16, 4.18, 4.20, 4.22, 4.24, 4.26, 4.28, 4.30, 4.32, 4.34, 4.36, 4.38, 4.40, 4.42, 4.44, 4.46, 4.48, 4.50, 4.52, 4.54, 4.56, 4.58, 4.60, 4.62, 4.64, 4.66, 4.68, 4.70, 4.72, 4.74, 4.76, 4.78, 4.80, 4.82, 4.84, 4.86, 4.88, 4.90, 4.92, 4.94, 4.96, 4.98, 5.00, 5.02, 5.04, 5.06, 5.08, 5.10, 5.12, 5.14, 5.16, 5.18, 5.20, 5.22, 5.24, 5.26, 5.28, 5.30, 5.32, 5.34, 5.36, 5.38, 5.40, 5.42, 5.44, 5.46, 5.48, 5.50, 5.52, 5.54, 5.56, 5.58, 5.60, 5.62, 5.64, 5.66, 5.68, 5.70, 5.72, 5.74, 5.76, 5.78, 5.80, 5.82, 5.84, 5.86, 5.88, 5.90, 5.92, 5.94, 5.96, 5.98, 6.00, 6.02, 6.04, 6.06, 6.08, 6.10, 6.12, 6.14, 6.16, 6.18, 6.20, 6.22, 6.24, 6.26, 6.28, 6.30, 6.32, 6.34, 6.36, 6.38, 6.40, 6.42, 6.44, 6.46, 6.48, 6.50, 6.52, 6.54, 6.56, 6.58, 6.60, 6.62, 6.64, 6.66, 6.68, 6.70, 6.72, 6.74, 6.76, 6.78, 6.80, 6.82, 6.84, 6.86, 6.88, 6.90, 6.92, 6.94, 6.96, 6.98, 7.00, 7.02, 7.04, 7.06, 7.08, 7.10, 7.12, 7.14, 7.16, 7.18, 7.20, 7.22, 7.24, 7.26, 7.28, 7.30, 7.32, 7.34, 7.36, 7.38, 7.40, 7.42, 7.44, 7.46, 7.48, 7.50, 7.52, 7.54, 7.56, 7.58, 7.60, 7.62, 7.64, 7.66, 7.68, 7.70, 7.72, 7.74, 7.76, 7.78, 7.80, 7.82, 7.84, 7.86, 7.88, 7.90, 7.92, 7.94, 7.96, 7.98, 8.00, 8.02, 8.04, 8.06, 8.08, 8.10, 8.12, 8.14, 8.16, 8.18, 8.20, 8.22, 8.24, 8.26, 8.28, 8.30, 8.32, 8.34, 8.36, 8.38, 8.40, 8.42, 8.44, 8.46, 8.48, 8.50, 8.52, 8.54, 8.56, 8.58, 8.60, 8.62, 8.64, 8.66, 8.68, 8.70, 8.72, 8.74, 8.76, 8.78, 8.80, 8.82, 8.84, 8.86, 8.88, 8.90, 8.92, 8.94, 8.96, 8.98, 9.00, 9.02, 9.04, 9.06, 9.08, 9.10, 9.12, 9.14, 9.16, 9.18, 9.20, 9.22, 9.24, 9.26, 9.28, 9.30, 9.32, 9.34, 9.36, 9.38, 9.40, 9.42, 9.44, 9.46, 9.48, 9.50, 9.52, 9.54, 9.56, 9.58, 9.60, 9.62, 9.64, 9.66, 9.68, 9.70, 9.72, 9.74, 9.76, 9.78, 9.80, 9.82, 9.84, 9.86, 9.88, 9.90, 9.92, 9.94, 9.96, 9.98, 10.00, 10.02, 10.04, 10.06, 10.08, 10.10, 10.12, 10.14, 10.16, 10.18, 10.20, 10.22, 10.24, 10.26, 10.28, 10.30, 10.32, 10.34, 10.36, 10.38, 10.40, 10.42, 10.44, 10.46, 10.48, 10.50, 10.52, 10.54, 10.56, 10.58, 10.60, 10.62, 10.64, 10.66, 10.68, 10.70, 10.72, 10.74, 10.76, 10.78, 10.80, 10.82, 10.84, 10.86, 10.88, 10.90, 10.92, 10.94, 10.96, 10.98, 11.00, 11.02, 11.04, 11.06, 11.08, 11.10, 11.12, 11.14, 11.16, 11.18, 11.20, 11.22, 11.24, 11.26, 11.28, 11.30, 11.32, 11.34, 11.36, 11.38, 11.40, 11.42, 11.44, 11.46, 11.48, 11.50, 11.52, 11.54, 11.56, 11.58, 11.60, 11.62, 11.64, 11.66, 11.68, 11.70, 11.72, 11.74, 11.76, 11.78, 11.80, 11.82, 11.84, 11.86, 11.88, 11.90, 11.92, 11.94, 11.96, 11.98, 12.00, 12.02, 12.04, 12.06, 12.08, 12.10, 12.12, 12.14, 12.16, 12.18, 12.20, 12.22, 12.24, 12.26, 12.28, 12.30, 12.32, 12.34, 12.36, 12.38, 12.40, 12.42, 12.44, 12.46, 12.48, 12.50, 12.52, 12.54, 12.56, 12.58, 12.60, 12.62, 12.64, 12.66, 12.68, 12.70, 12.72, 12.74, 12.76, 12.78, 12.80, 12.82, 12.84, 12.86, 12.88, 12.90, 12.92, 12.94, 12

© 2000 Blackwell Science Ltd *Journal of Internal Medicine* 247: 395–401

La Batterie Pro

multivariate analysis

Received 15 November 2000
 Accepted 12 February 2001

Il est possible de passer de la première à la deuxième forme en posant $\alpha = \frac{1}{2}(\beta + \gamma)$ et $\beta = \gamma$.

© 2000 Blackwell Science Ltd
Journal of Internal Medicine 247: 101–107

100% satisfaction
 guaranteed or your money back

Source: *Journal of the American Statistical Association*, 1997, 92, 1033-1046.

... ..



NOCO 
genius

G7200
7.2A (7200mA)

MODE 

25% 50% 75% 100%

12V 24V

12V AGM 12V LITHIUM

12V 13.6V


REPAIR SUPPLY

7.2A 7.2A

720001100001



NOCO genius[®]



Smart multi-purpose
battery chargers.

UltraSafe, smart battery chargers designed
to charge and maintain all battery sizes.

Smart charging, for all sizes.

Designed for ATVs, lawn mowers, motorcycles, cars, trucks, boats, RVs, tractors, equipment, and more.

G4

6V&12V

1.1A X 4

Modes:

12V Norm

12V Cold/AGM

6V Norm

12V Lithium



G750

6V&12V

.75A

Modes:

12V Norm

6V Norm



G1100

6V&12V

1.1A

Modes:

12V Norm

12V Cold/AGM

6V Norm

12V Lithium



G3500

6V&12V

3.5A

Modes:

12V Norm

12V Cold/AGM

12V Norm Small

12V Cold/AGM Small

6V Norm

12V Lithium

12V Repair



G7200

12V&24V

7.2A

Modes:

12V Norm
12V Cold/AGM
24V Norm
24V Cold/AGM
12V Lithium
12V AGM+
12V Supply
12V Repair



G15000

12V&24V

15A

Modes:

12V Norm
12V Cold/AGM
24V Norm
24V Cold/AGM
12V Lithium
12V AGM+
12V Supply
12V Repair
+ JumpCharge
[Vehicle Starting]



G26000

12V&24V

26A

Modes:

12V Norm
12V Cold/AGM
24V Norm
24V Cold/AGM
12V Lithium
12V AGM+
16V Lithium Racing
16V AGM Racing
12V Supply
12V Repair
+ JumpCharge
[Vehicle Starting]

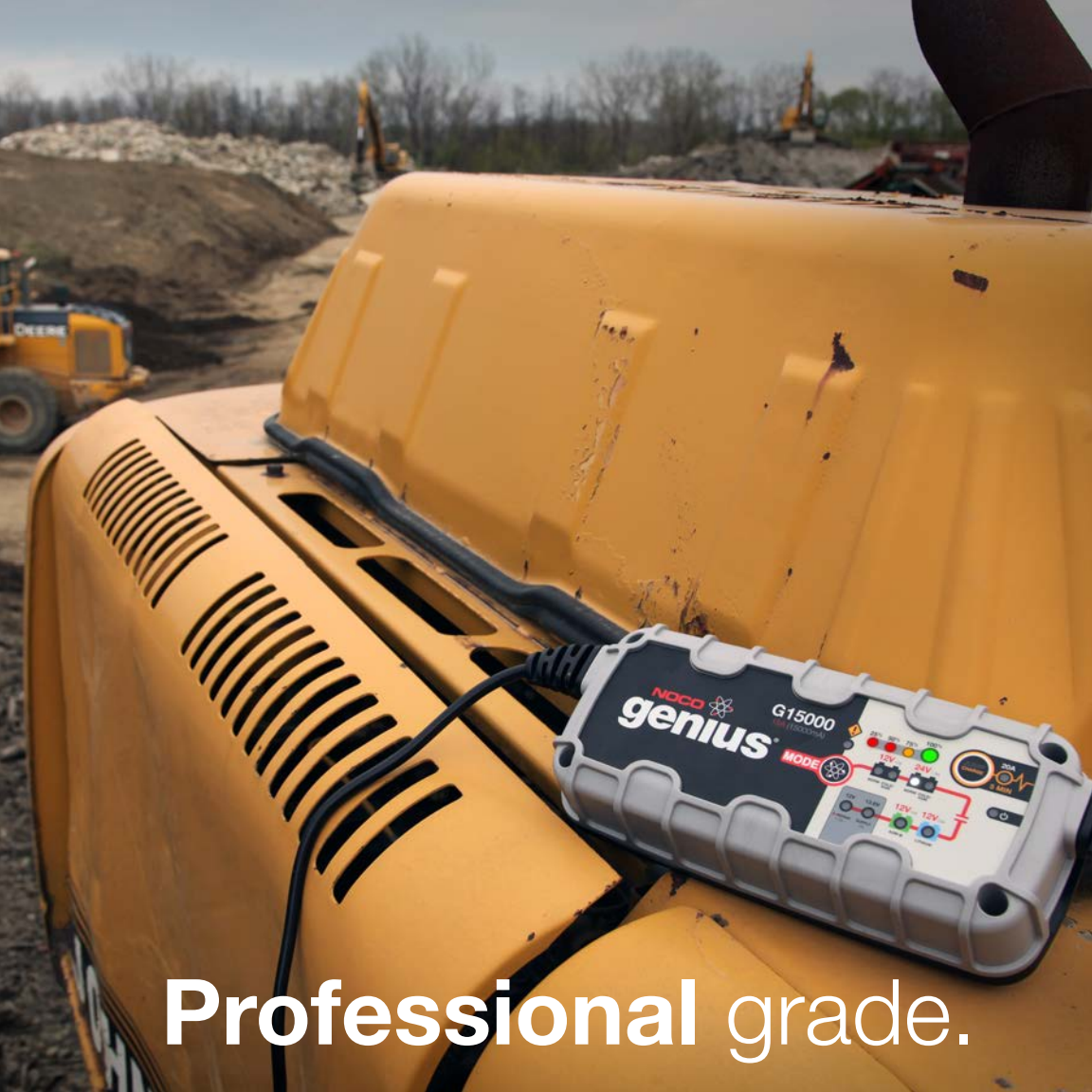


Smart Multi-Purpose
Battery Chargers

genius®



Small, yet powerful.



Professional grade.



Start-Stop

Counteracts increased cyclic energy demands placed on batteries in micro-hybrid vehicles.



Firewall

Multi-level safety barrier prevents unsafe and abnormal conditions.



Optimization

Stabilizes internal battery chemistry for increased performance and longevity.



Load Tracking

Dynamically changes charge current when a load is placed on the battery.



Diagnostics

Intuitive visual diagnostic tool for detecting reverse polarity, low-voltage or damaged batteries.



Energy-Save

Minimizes energy consumption when full power is not needed.



Thermal Monitor

Internal temperature sensors adjust charge based on ambient climate.



Safe

Protects against reverse polarity, sparks, overcharging, overcurrent, open-circuits, short-circuits and overheating.



Memory

Returns to last selected mode when restarted.



Interactive

Alters the charging process based on organic battery feedback.



Recovery

Applies a high-voltage pulse charge when low-voltage, sulfation, or lost capacity is detected.



Rugged

Dirt, water, UV, impact, and crush resistant.



CANBUS

Automatically enables the charging port to charge CANBUS systems.



Maintenance Plus

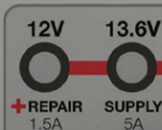
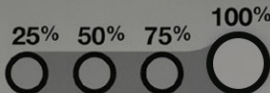
Keeps the battery fully charged without overcharging, indefinitely.

Advanced diagnostics.

G15000
15A (15000mA)

S[®]

MODE



Standard on all **G Series** and **GX Series** Chargers.



Identify problems to solve them more efficiently.



Advanced diagnostics analyze the battery and display specific errors if a problem is detected. The flash pattern tells you what is wrong so you can quickly fix it:

Single Flash: Battery will not hold a charge and should be checked by a professional.

Double Flash: Possible battery short, and should be checked by a professional.

Triple Flash: Battery voltage is too high for the selected charge mode.
Double check the battery matches the charge mode.

Error LED Solid Red: Reverse polarity. Reverse the connections to the battery.

Standby LED Solid Orange: Battery voltage is too low for charger to detect the battery.





NOCO genius[®]

Smart industrial
battery chargers.

UltraSafe, universally adaptable chargers designed
for heavy-use industrial vehicles, anywhere.

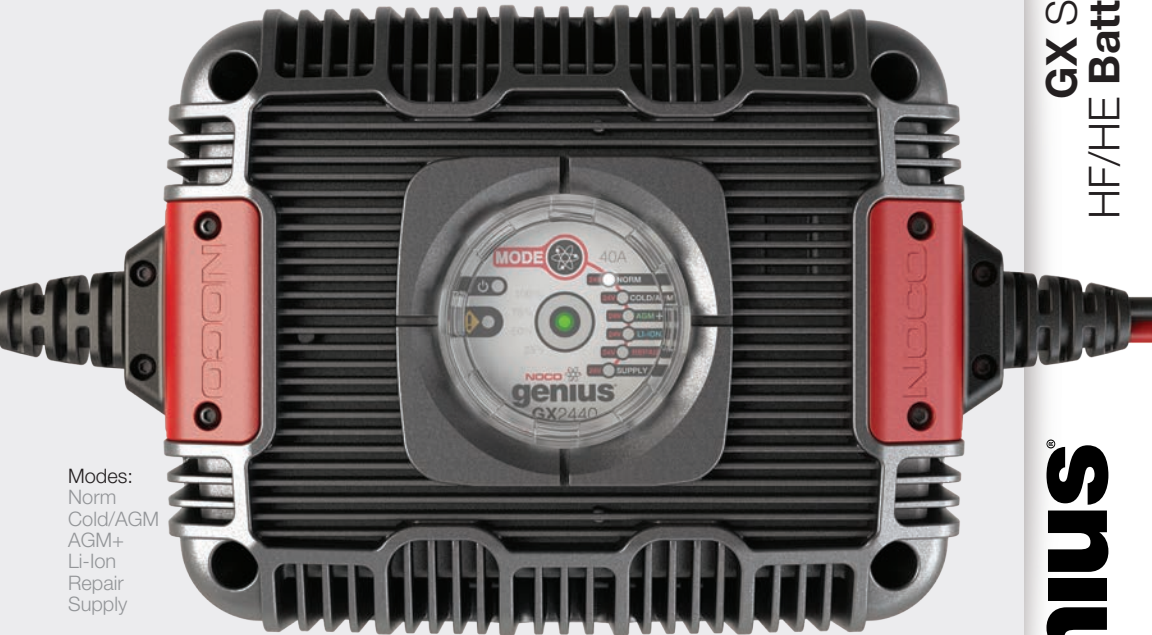
Industrial
strength.



Control.
Interchangeable
cables & secure
interface.

92% Efficiency.

Precision aluminum body. Waterproof & tamperproof interface. Compact industrial on-board chargers.



Modes:
Norm
Cold/AGM
AGM+
Li-Ion
Repair
Supply

3 models available, same compact size & advanced features:

GX2440
24V 40A

GX3626
36V 26A

GX4820
48V 20A

**GX Series Industrial
HF/HE Battery Chargers**

genius®



Inhibit port.

Prevent vehicle and equipment operation while charging.

Remote LEDs port.

Used to connect LEDs for easy monitoring when the charger's LEDs are not accessible.

Universal input, flexible output.

Interchangeable AC and DC cables.

GXC101

NA Type B



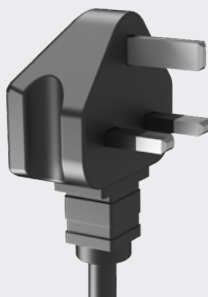
GXC102

EU Type F



GXC103

UK Type G



GXC104

AU Type I



GXC002

HD Eylet
Connectors



GXC005

Anderson SB50
Cable



GXC006

Club Car Cable
3-Pin Round Plug



GXC007

EZ-GO Cable
3-Pin Triangle Plug



GXC008

Yamaha Cable
2-Pin Plug



GXC009

EZ-GO Cable
Powerwise D Plug



GX Series
Accessories

genius®



GEN4
4 BANK 40A

NOCO
genius

CHARGE
BANK 1
12V OUT 10A

CHARGE
BANK 2
12V OUT 10A

CHARGE
BANK 3
12V OUT 10A

CHARGE
BANK 4
12V OUT 10A

DC ON



NOCO 
genius®

GEN
Waterproof on-board
battery chargers.

UltraSafe, smart battery chargers designed to fully charge and maintain batteries in extreme environments.

Waterproof smart charging.

Designed for marine and industrial applications where durability is crucial. Completely sealed, 100% waterproof.

GEN 10A/Bank

GCP1

AC Port w/Integrated
Extension Cable



GEN1

12V 10A



GEN2

12V 20A
2 Bank



GEN MINI 4A/Bank

GENM1
12V 4A



GENM2
12V 8A
2 Bank



GENM3
12V 12A
3 Bank



GEN3
12V 30A
3 Bank



GEN4
12V 40A
4 Bank



Smart Waterproof
On-Board Battery Chargers

genius

Designed **tough.** IP68





Waterproof

100% completely sealed, protects against extreme working environments & rated at IP68.



Safe

Protects against reverse polarity, sparks, overcharging, overcurrent, open-circuits, short-circuits, and overheating.



Firewall

Multi-level safety barrier prevents unsafe and abnormal conditions.



Interactive

Alters the charging process based on organic battery feedback.



Recovery

Applies a high-voltage pulse charge when low-voltage, sulfation, or lost capacity is detected.



Optimization

Stabilizes internal battery chemistry for increased performance and longevity.



Ignition Protected

Non-igniting and temperature controlled for safe and worry-free operation.



®



Solar battery chargers.

BATTERY LIFE+ SOLAR 5

5W Solar Battery Charger + Maintainer



BATTERY LIFE+ SOLAR 2

2.5W Solar Battery Charger + Maintainer



NOCO XCONNECT

Compatible with all NOCO X-Connect accessories.

Rigid Solar Panel
12V Auto Kits

BATTERY LIFE+



Maintenance, perfected.

Lead Acid

Wet

Gel

MF

EFB

AGM

12V

Auto | Marine | RV | Powersport | Lawn & Garden

Waterproof

Weather resistant solar charger for outdoor use rated at IP65.

UV Resistant

Engineered to take the abuse of the sun through the use of color stabilization and UV inhibitors.

Designed For Safety

Short circuit, open circuit, overheat, and overcurrent protected.

Thin Film Technology

Works well in low-light, cloudy, and overcast conditions.

Black Current Protection

Protects the battery from accidental back current drain at night.

Ultra Low-Profile

Unique low-profile design for a light weight, compact charger.

Rugged Frame

Made from an engineered polymer for high-strength and durability.

Rigid Solar Panel
12V Auto Kits

BATTERY LIFE+

Dependable charging accessories.



GC001

Battery Clamp Connector

Quickly connect to any battery, or keep attached for convenient charging.



GC002

Eyelet Terminal Connector

Permanently mount one on your ATV, Motorcycle, Car, Boat or any other vehicle for easy charging.



GC003

12V Plug Connector

Charge and maintain your vehicle's battery by plugging into the 12V auxiliary plug.



GC004

10' Extension Cable

Extend the reach of your NOCO chargers and accessories with the GC004 10' Extension Cable.



GC008

XL Eyelet Terminal Connector

Connect to batteries with 3/8" terminals. Permanently mount eyelets to your vehicle.



GC009

SAE Adapter



GC010

12V Plug Female Outlet

Use with a G7200 in supply mode to create a 12V outlet, or pair with the GC013 Male-to-Male.



GC011

12V Plug Connector (Dual Size)

The dual size adapter fits both standard size 12V plugs & mini 12V outlets on motorcycles.



GC012

OBDII Connector
Connect to the OBDII Connector found in vehicles 1996 and newer.



GC013

Male-to-Male Coupler



GC015

12V Eyelet Battery Indicator
Built-in LEDs indicate the charge level of the battery, for ongoing monitoring.



GC016

12V Dashmount Battery Indicator

Quickly connect to any battery from wherever the Dashmount Battery Indicator is located.



GC024

XLR Connector
Quickly connect to any 24V XLR port (commonly found on power wheelchairs) with the G7200.



GC032

HD Battery Clamps w/Integrated Eyelet Connector

Quickly connect to any battery or permanently mount the eyelets (For G15000 & G26000 Only).



Boost accessories.



Safe, jump starting accessories.



GBC001

HD Boost Battery Clamps

Heavy Duty clamps designed to efficiently transfer maximum current flow with minimal power loss, and silicone insulation for heat stability and flexibility.



GBC002

Powersport Battery Clamps

Needle-nosed clamps designed for powersport applications. Equipped with integrated eyelets allowing for permanent battery-mounting.



GBC007

Boost Eyelet Cable w/Charging Adapter

Permanently mount a Boost Eyelet Cable to difficult-to-access batteries and use the X-Connect charging adapter to connect to a Genius Charger.



GBC009

Boost Eyelet Cable w/Charging Adapter (SAE)

Permanently mount a Boost Eyelet Cable to difficult-to-access batteries and use the SAE charging adapter to connect to a charger.

Accessories on this page work exclusively with GB20 and GB40.

GBC012



Boost Settings Keeper

Boost Settings Keeper allows you to change or disconnect your car battery without losing your programmed electronic settings.
(Compatible with GB70, GB150, and GB500)

NUSB211NA



AC USB Charger

10W AC USB Charger Type A for rapidly charging devices that recharge using a USB cable - including Boost.

XGC4



XGC4 Power Adapter

Recharge Boost five times faster with the 56W XGC4 AC Power Adapter. Compatible with GB70, GB150, and GB500.

Protective cases.



Rugged storage.

Protective EVA hard cases designed and made exclusively to fit Boost UltraSafe® jump starters.

GBC013

GB20/GB40



GBC014

GB70



GBC015

GB150



**Boost Series
EVA Cases**

NOCO®



12V accessories.

Universal 12V accessories.



GC017

12V Plug w/Battery Clamps

Instantly tap into a 12V battery's power and create an easy-to-use 12V port.



GC018

12V Plug w/Eyelet Terminals

Turn any 12V battery into an AUX 12V port.



GC019

12V Plug 12' Extension Cable

Extend the reach of your 12V ports with this heavy duty 12' extension cable.



GC020

12V Plug 2-Way Splitter

Expand a 12V AUX port and plug in multiple 12V devices at the same time.



GC035

12V Male OBDII Connector

Connect to a 12V power source to the vehicle's OBDII port to save onboard computer settings.



Keep away from children.
See back for full instructions.

CB104

Invented In 1914, The Original
Brush-on

Made in
USA

NCP2

Corrosion
Preventative



Ultra Premium
Oil Based
Proven Formula



NCP2[®]

Oil-based battery corrosion preventative.

Premium oil-based preventative that never dries,
protecting your battery from harmful corrosion.

The original battery corrosion preventative since 1914.

Designed to stop corrosion for the life of your battery.
The NCP2 oil-based compound never dries or evaporates.

CB104

NCP2 Battery
Corrosion
Preventative
(4 oz.)



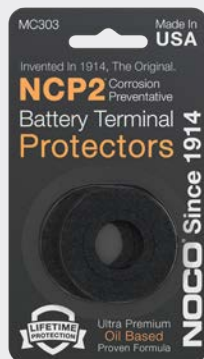
B603

NCP2 Battery Corrosion
Terminal Protectors
(50 ct.)



MC303

NCP2 Battery
Terminal Protectors
(2 ct.)



M101S

NCP2 Battery
Corrosion
Preventative
(1 oz.)



MC101
NCP2 Battery
Terminal Treatment Kit
(1 Fluid oz, 2 ct. Washers)



A202
NCP2 Battery
Corrosion
Preventative
(12.25 oz.)



C506
NCP2 Battery
Corrosion Preventative
(5 gal.)



Corrosion Prevention

NCP2

REMOVE

Battery cleaner.



Instantly dissolve
harmful corrosion.

Top-of-the-line battery cleaner for
identifying and removing battery acid.

Quick battery cleaning.

Professional-grade battery cleaning chemicals that neutralize, dissolve, and remove battery corrosion.

Battery Cleaner

E403

Remove Battery Cleaner
(14 oz.)



E404

Remove+ Battery Cleaner & Acid Detector
(14 oz.)



M401

Remove Battery Terminal Treatment Kit
(1 oz. of Remove, 1 oz. of NCP2, Battery Terminal Brush, 2 ct. Washers)



MB104

Remove Battery Terminal Treatment Kit
(8.0 cc, 2 ct. Washers)



REMOVE

SQUEAKY



**Professional grade
glass cleaner.**

Pro foaming agent for streak free, fast acting
cleaning with no residue or abrasion.

Spotless glass cleaner.

Professional grade, streak-free foaming glass cleaner that is tough on dirt, dust, bugs, and grime.

E800

Squeaky Professional
Grade Glass Cleaner

(16 oz.)



**Professional Glass
Cleaner**

SQUEAKY

Snap-Top[®] & Commercial





Impact-modified reinforced battery boxes.

Proven to stand up to extreme temperatures,
battery acids, and heavy wear and tear.

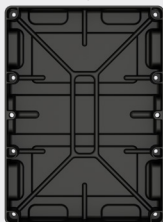
Battery Trays

Heavy Duty injection-molded trays, compatible with J-bolts and straps.

Snap-Top[®] Battery Boxes

BT24

Group 24



11.3 x 7.3in

Maximum Battery Footprint

BT27

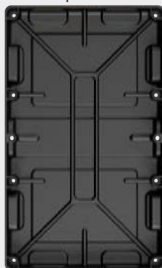
Group 27



13.1 x 7.3in

BT31

Group 27-31



13.7 x 7.3in

HM082BK

Group U1



8 x 5.2 x 7in

Maximum Battery Dimensions

HM300BK

Group 24



10.5 x 7.2 x 9.6in

Commercial

Battery Boxes

Durable roto-molded battery boxes for marine and deep cycle batteries.

HM426

Dual 6-Volt



14.6 x 10.5 x 11.5in

Maximum Battery Dimensions

HM462

Dual L16



14.4 x 12 x 17.4in

HM408

4D



21.2 x 9.6 x 11.1in

Rugged injection-molded battery boxes
for marine and deep cycle batteries.

HM306BK

6-Volt



10.6 x 7.6 x 11.2in

HM318BK

Group 24-31



14 x 7.1 x 9.6in

HM327BK

Group 27



13.2 x 7.2 x 10in

HM484

8D



21 x 11.8 x 10.3in

HM485

Dual 8D



21 x 23 x 10.6in

Battery Trays & Boxes

NOCO[®]

no.co

1914