



WINNIPEG
 1280 Border Street
 Winnipeg, MB R3H 0M6
 Phone: 204-633-3500
winnipeg@prairiebattery.ca

BRANDON
 1124 - 18th Street
 Brandon, MB R7A 5C2
 Phone: 204-727-7181
brandon@prairiebattery.ca

REGINA
 646 Henderson Drive
 Regina, SK S4N 5X3
 Phone: 306-761-1688
regina@prairiebattery.ca

EDMONTON
 15337 112 Ave NW
 Edmonton, AB T5M 2N9
 Phone: 780-244-2252
edmonton@prairiebattery.ca

SUPERIOR

AGM, Maintenance-Free Battery

FEATURES

- Premium Absorbed Glass Mat (AGM) material with high puncture resistance.
- Valve Regulated Lead Acid (VRLA) Dry-Charged construction.
- Pure lead calcium alloy.
- Special cast grid design.
- High performance active materials.
- Anti-Sulfation additive.
- Tight-Pak element construction.
- High capacity and cranking performance.

BENEFITS

- Precise compression and superior performance.
- Ultra-Low self-discharge.
- Anti-Sulfation additive reduces deep discharge concerns.
- Outstanding vibration resistance.
- Once filled, never need to check acid levels or add water.

AGM - AVAILABLE IN TWO DESIGNS

Factory Activated (FA)

- Battery filled and charged at factory.
- 100% charged and ready to install.
- Non-spillable.
- 12-Volt.

Bottle Supplied (BS)

- Dry battery with acid pack, "Fresh Pack".
- No self-discharge concerns.
- Supplied with a one-push acid filling bottle.
- Exact volume acid fill system. Simple and safe.
- No tubes or funnels!
- 12-Volt.



PERFORMANCE

Conventional Battery

FEATURES

- Dry-Charged construction.
- Supplied with or without exact-volume acid bottle.
- Dry battery with acid pack, "Fresh Pack".
- Anti-Sulfation additive.
- Tight-Pak element construction.
- Meets OEM specifications.

BENEFITS

- Great starting capacity and exceptional value.
- Anti-Sulfation additive reduces deep discharge concerns.
- Exact volume acid bottle results in easy, safe filling, no leftover acid to dispose.
- Premium separators provide improved performance.
- Tight-Pak construction reduces vibration damage concerns.

CONVENTIONAL - AVAILABLE IN TWO TYPES

High Performance Conventional (CB and LM series)

- Pure lead calcium alloy (LM series).
- Higher capacity, longer life.
- Premium glass leaf separators.
- Improved starting capacity.
- 12-Volt.

Conventional

- Fiberglass leaf separators.
- 6-Volt and 12-Volt.

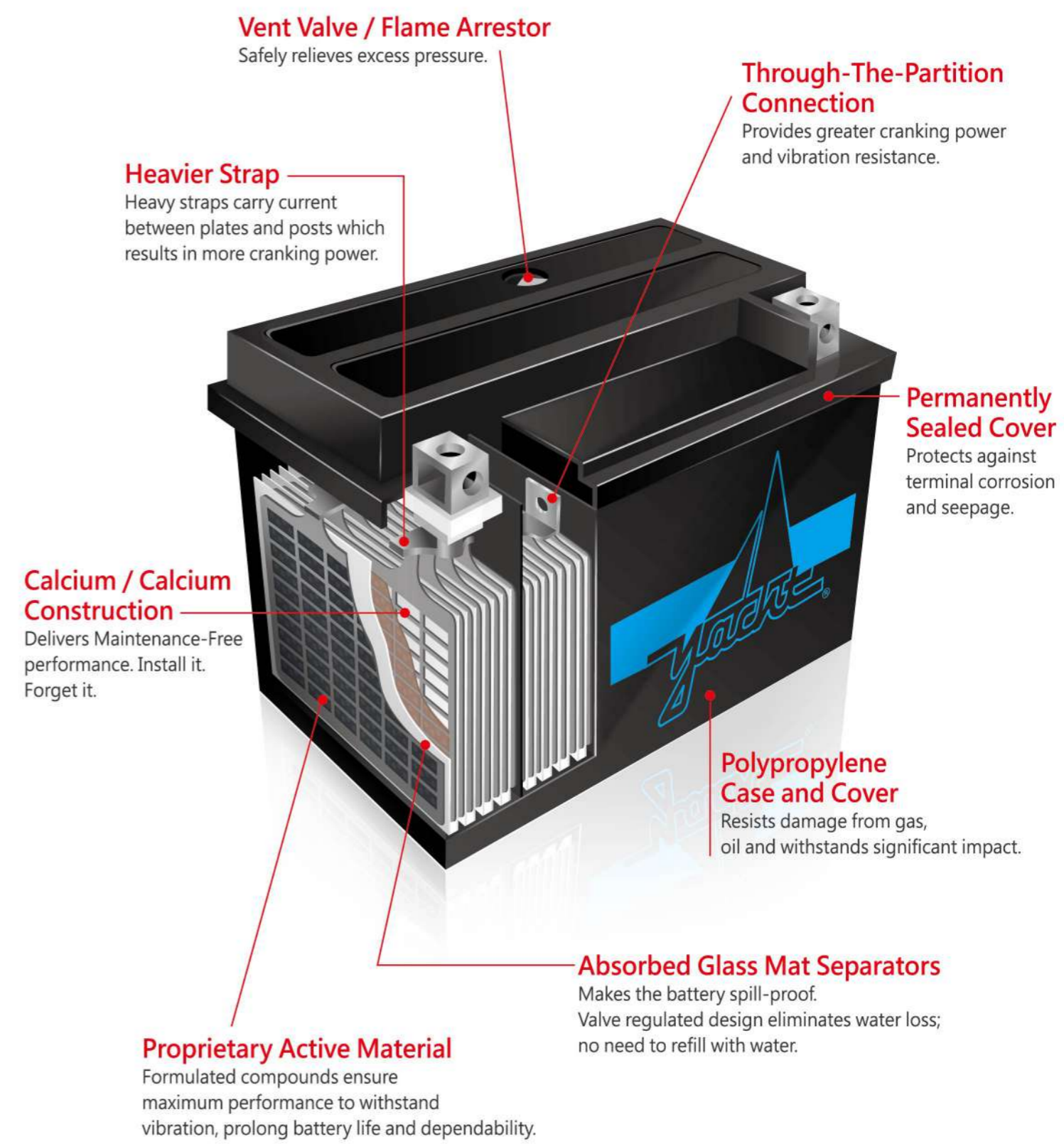


Battery Upgrade Chart

SUPERIOR - AGM, Maintenance-Free			PERFORMANCE - Conventional	
Factory Activated (FA)	Bottle Supplied (BS)	Bottle Supplied (BS)	High Performance Conventional (CB and LM series)	Conventional
—	—	—	6CB11-2D	6N11-2D
CTX4L (FA)	CTX4L-BS	CT4L-BS	CB4L-A, CB4L-B	—
CTZ7S	CTZ7S-BS	CTX5L-BS	—	—
CTX5L (FA)	CTX5L-BS	CT5L-BS	—	—
CTZ6L (FA)	CTZ6L-BS ⁵	CTX5L-BS	—	—
CTZ8V ²²	CTX7L (FA), CTX7L-BS	—	—	—
—	—	—	CB5L-B	12N5-3B
—	—	—	CB7-A	12N7-4A
—	—	—	CB7L-B	12N7-3B
—	—	—	CB9-B	12N9-4B-1
—	—	—	CB9L-B	12N9-3B
—	—	—	CB9L-A2	12N9-3A-1
—	—	—	CB10L-A2	12N10-3A-2
—	—	—	CB10L-B	12N10-3B, 12N10-3B-1
—	—	—	CB12A-A	12N12A-4A-1
CTX14H (FA)	CTX14H-BS ⁶	CTX14-BS	—	—
CTX14AH (FA)	CTX14AH-BS	—	CB14-A2, CB14-B2	—
CTX14AH (FA) ⁴	CTX14AH-BS ⁴	—	CB14A-A1, CB14A-A2	—
(10 mm spacer provided)	(10 mm spacer provided)	—	—	—
CTX14AHL (FA)	CTX14AHL-BS	—	CB14L-A2, CB14L-B2	12N14-3A, 12N14-3B
CTX19 (FA)	—	CTX19-BS	CB16-B, CB16-B-LM ¹⁵	12N16-4B
CTX19L (FA)	—	CTX19L-BS	CB16L-B, CB16HL-A-LM ¹⁵	12N16-3A, 12N16-3B
CTX16CL-B (FA) ³	CTX16CL-B-BS ³	—	CB16CL-B	—
CTX20H (FA)	CTX20H-BS, CTX20H-BSA ⁷	CTX20-BS	CB18-A	—
CTX20HL (FA)	CTX20HL-BS, CTX20HL-BSA ⁸	CTX20L-BS	CB18L-A	—
CTX20CH (FA)	CTX20CH-BS ⁹	CTX16-BS	—	—
CTX24HL (FA) ¹	CTX24HL-BS ^{1,10}	—	C50-N18L-A, C50-N18L-A-LM ¹⁵	12N18-3A
CTX24HL (FA) ^{1,2}	CTX24HL-BS ^{1,2}	—	SC50-N18L-AT ^{12,14}	—
CTX24HL (FA)	CTX24HL-BS ¹⁰	CTX18L-BS	C50-N18L-AT, C50-N18L-A / A2 / A3	12N18-3A
CTX30L (FA)	CTX30L-BS, CTX30L-BSA	—	CB30L-B	—
—	CTX30CL-B-BS ³	—	CB30CL-B	—

¹ Top And Front Terminal Mounts Only.
² Eliminates Need For Sensor (Needs To Be Disabled).
³ Exact Fit Without Spacer.
⁴ Include 10mm Spacer To Increase Height For Replacing CB14A-A1 And CB14A-A2.
⁵ S=ELECTROLYTE SENSOR (See Page 34), Some Motorcycles Are Factory-Equipped With A Sensor To Monitor Electrolyte Levels.
⁶ AT=WIRE LEAD (See Page 34).
⁷ LM (=YUASA 'CX' BATTERY) Low Maintenance.
⁸ CTZ6L-BS Increased Capacity/CCA Compared To CTX5L-BS.
⁹ CTX14H-BS Increased Capacity/CCA Compared To CTX14-BS.
¹⁰ CTX20H-BS Increased Capacity/CCA Compared To CTX20-BS.
¹¹ CTX20HL-BS Increased Capacity/CCA Compared To CTX20L-BS.
¹² CTX20CH-BS Increased Capacity/CCA Compared To CTX16-BS.
¹³ CTX24HL-BS Increased Capacity/CCA Compared To CTX18L-BS.
¹⁴ CTZ8V Increased Capacity/CCA Compared To CTX7L (FA).

BATTERY CUTAWAY WITH FEATURES AND BENEFITS



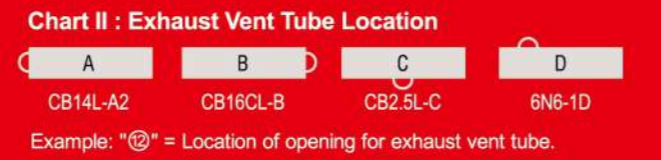
Part Number Designation

AGM, Maintenance-Free						Conventional, High Performance							Conventional							
CT	X	7	L	-	BS / (FA)	C	50	-	N	18	L	A	2	6	N	6	-	3	B	
①	②	③	④	⑤	⑥ / ⑦	⑧	⑨	⑩	⑪	⑫	⑬	⑭	⑮	⑯	⑰	⑱	⑲	⑳	㉑	
CT	X	7	L	-	BS / (FA)	C	50	-	N	18	L	A	2	6	N	6	-	3	B	
CT	Z	10		S		CB	16	A			L	A	2	12	N	12	A	4	A	1

- Designations**
- ① - Maintenance-Free battery
 - ② - High Performance AGM
 - ③ - Performance level
 - ④ - Polarity location (see Chart I)
 - ⑤ - Sealed type battery
 - ⑥ - One push electrolyte liquid injection system (Bottle Supplied)
 - ⑦ - Factory Activated (FA) Sealed, Non-Spillable battery
 - ⑧ - High Performance Conventional battery
 - ⑨ - Cranking or starting power
 - ⑩ - Indication of different size of the same capacity battery
 - ⑪ - Vented type battery (N=normal, "CB"=High performance)
 - ⑫ - Exhaust vent tube location (see Chart II)
 - ⑬ - Type of terminal
 - ⑭ - Nominal voltage (6-Volt or 12-Volt)
 - ⑮ - Battery capacity at 10 hr. rate



Example: "④" = Polarity Location
 (L=Indicates positive terminal is located on right side of battery)



Proprietary Active Material
 Formulated compounds ensure maximum performance to withstand vibration, prolong battery life and dependability.

Absorbed Glass Mat Separators
 Makes the battery spill-proof. Valve regulated design eliminates water loss; no need to refill with water.

SPECIFICATIONS • AGM, Maintenance-Free Battery

12-VOLT ▼

BATTERY TYPE		CCA 0°F -18°C	CAPACITY AH (10HR)	MAXIMUM DIMENSIONS						ASSEMBLY FIGURE	WEIGHT (KG)		WEIGHT (LBS)		ACID VOLUME (Liter)	TERMINAL (P.33)
				MILLIMETERS (±2 mm)			INCHES (±1/16 in)				WITH ACID	WITHOUT ACID	WITH ACID	WITHOUT ACID		
				L	W	H	L	W	H		FA	BS	FA	BS		
CTZ5S	N/A	65	3.5	113	70	88	4 7/16	2 3/4	3 7/16	[Diagram]	1.60	N/A	3.52	N/A	N/A	D
CTZ7S	CTZ7S-BS	85	6	113	70	107	4 7/16	2 3/4	4 3/16	[Diagram]	2.27	1.60	5.00	3.52	0.24	D
CTZ8V ²²	N/A	120	7	113	70	130	4 7/16	2 3/4	5 1/8	[Diagram]	2.70	N/A	5.95	N/A	N/A	D
CTZ10S	CTZ10S-BS	170	8.6	151	87	92	5 15/16	3 7/16	3 5/8	[Diagram]	3.15	2.53	6.94	5.57	0.42	D
CTZ12S	CTZ12S-BS	210	11	151	87	110	5 15/16	3 7/16	4 5/16	[Diagram]	4.06	3.31	8.94	7.29	0.54	D
CTZ14S	CTZ14S-BS	220	11.2	151	87	110	5 15/16	3 7/16	4 5/16	[Diagram]	4.26	3.51	9.38	7.73	0.54	D
CT2.5L	N/A	30	2.5	79	69	105	3 1/8	2 11/16	4 1/8	[Diagram]	1.21	N/A	2.67	N/A	N/A	—
CT4B-5	N/A	40	2.5	113	38	86	4 7/16	1 1/2	3 3/8	[Diagram]	1.05	N/A	2.31	N/A	N/A	N
CT7B-4	CT7B-BS	110	6.5	151	66	92	5 15/16	2 9/16	3 5/8	[Diagram]	2.60	2.04	5.73	4.49	0.31	J / D
CT9B-4	CT9B-BS	120	8	151	69	105	5 15/16	2 11/16	4 1/8	[Diagram]	3.05	2.30	6.72	5.07	0.42	J / D
CT12B-4	CT12B-BS	170	10	151	69	130	5 15/16	2 11/16	5 1/8	[Diagram]	3.90	3.07	8.59	6.76	0.54	J / D
CT14B-4	CT14B-BS	180	12	151	69	144	5 15/16	2 11/16	5 5/8	[Diagram]	4.40	3.45	9.69	7.60	0.60	J / D
N/A	CTR4A-BS	40	2.3	113	48	85	4 7/16	1 7/8	3 3/8	[Diagram]	N/A	0.95	N/A	2.09	0.14	O
CT4L (FA)	CT4L-BS	40	3	113	70	87	4 7/16	2 3/4	3 7/16	[Diagram]	1.45	1.22	3.20	2.69	0.19	D
CTX4L (FA)	CTX4L-BS	50	3	113	70	87	4 7/16	2 3/4	3 7/16	[Diagram]	1.50	1.25	3.30	2.75	0.19	D
CT5L (FA)	CT5L-BS	60	4	113	70	105	4 7/16	2 3/4	4 1/8	[Diagram]	1.91	1.60	4.21	3.52	0.24	D
CTX5L (FA)	CTX5L-BS	80	4	113	70	105	4 7/16	2 3/4	4 1/8	[Diagram]	1.97	1.65	4.34	3.63	0.24	D
CTZ6L (FA)	CTZ6L-BS ⁵	85	5	113	70	105	4 7/16	2 3/4	4 1/8	[Diagram]	2.07	1.75	4.56	3.85	0.24	D
CTX7L (FA)	CTX7L-BS	100	6	113	70	130	4 7/16	2 3/4	5 1/8	[Diagram]	2.48	2.00	5.46	4.41	0.34	D
CTX7A (FA)	CTX7A-BS	105	6	150	87	95	5 7/8	3 7/16	3 3/4	[Diagram]	2.48	2.00	5.46	4.41	0.35	D
CTX9 (FA)	CTX9-BS	130	8	151	87	106	5 15/16	3 7/16	4 3/16	[Diagram]	2.87	2.30	6.33	5.07	0.42	D
CTX12 (FA)	CTX12-BS	175	10	150	87	130	5 7/8	3 7/16	5 1/8	[Diagram]	4.12	3.30	9.07	7.27	0.60	D
CT12A-BS	CTX12A-BS	170	10	151	87	106	5 15/16	3 7/16	4 3/16	[Diagram]	3.60	3.00	7.93	6.61	0.50	J / D
CTX14 (FA)	CTX14-BS	200	12	150	87	146	5 7/8	3 7/16	5 3/4	[Diagram]	4.60	3.70	10.13	8.15	0.66	D
CTX14H (FA)	CTX14H-BS ⁶	240	14	150	87	146	5 7/8	3 7/16	5 3/4	[Diagram]	5.10	4.20	11.23	9.25	0.66	D
CTX14L (FA)	CTX14L-BS	200	12	150	87	146	5 7/8	3 7/16	5 3/4	[Diagram]	4.60	3.70	10.13	8.15	0.66	D
CTX14AH (FA) ⁴	CTX14AH-BS ⁴	210	12	134	89	166	5 1/4	3 1/2	6 1/2	[Diagram]	5.02	4.04	11.05	8.90	0.68	D
CTX14AHL (FA)	CTX14AHL-BS	210	12	134	89	166	5 1/4	3 1/2	6 1/2	[Diagram]	5.02	4.04	11.05	8.90	0.68	D
CTX15L (FA)	CTX15L-BS	230	13	175	87	130	6 7/8	3 7/16	5 1/8	[Diagram]	5.06	4.20	11.14	9.25	0.66	D
CTH16 (FA)	CTH16-12	230	14	150	88	161	5 7/8	3 7/16	6 5/16	[Diagram]	5.30	4.22	11.67	9.30	0.80	A
CTX16 (FA)	CTX16-BS	230	14	150	88	161	5 7/8	3 7/16	6 5/16	[Diagram]	5.30	4.22	11.67	9.30	0.80	D
CTX16-1 (FA)	CTX16-BS-1	230	14	150	88	161	5 7/8	3 7/16	6 5/16	[Diagram]	5.30	4.22	11.67	9.30	0.80	A

⁴ Include 10mm Spacer To Increase Height For Replacing CB14A-A1 And CB14A-A2.

⁵ CTZ6L-BS Increased Capacity/CCA Compared To CTX5L-BS.

⁶ CTX14H-BS Increased Capacity/CCA Compared To CTX14-BS.

²² CTZ8V Increased Capacity/CCA Compared To CTX7L (FA).

(Continued)

SPECIFICATIONS • AGM, Maintenance-Free Battery

12-VOLT ▼

BATTERY TYPE		CCA 0°F -18°C	CAPACITY AH (10HR)	MAXIMUM DIMENSIONS						ASSEMBLY FIGURE	WEIGHT (KG)		WEIGHT (LBS)		ACID VOLUME (Liter)	TERMINAL (P.33)
				MILLIMETERS (±2 mm)			INCHES (±1/16 in)				WITH ACID	WITHOUT ACID	WITH ACID	WITHOUT ACID		
				L	W	H	L	W	H		FA	BS	FA	BS		
CTX16CL-B (FA) ³	CTX16CL-B-BS ³	270	19	178	102	175	7	4	6 7/8	[Diagram]	7.05	5.65	15.54	12.44	1.05	D
CTX18 (FA)	CTX18-BS	290	21	205	90	164	8 1/16	3 9/16	6 1/2	[Diagram]	7.36	5.60	16.21	12.33	1.20	D
CTX18L (FA)	CTX18L-BS	290	21	205	90	164	8 1/16	3 9/16	6 1/2	[Diagram]	7.36	5.60	16.21	12.33	1.20	D
CTX19 (FA)	CTX19-BS	260	19	175	101	157	6 7/8	3 15/16	6 3/16	[Diagram]	7.02	5.65	15.45	12.44	1.05	D
CTX19L (FA)	CTX19L-BS	260	19	175	101	157	6 7/8	3 15/16	6 3/16	[Diagram]	7.02	5.65	15.45	12.44	1.05	D
CTX19L-U	N/A	260	19	175	101	157	6 7/8	3 15/16	6 3/16	[Diagram]	7.20	N/A	15.86	N/A	N/A	U
CTX20CH (FA)	CTX20CH-BS ⁹	270	18	150	87	161	5 7/8	3 7/16	6 5/16	[Diagram]	5.80	4.69	12.77	10.33	0.80	D
CTX20 (FA)	CTX20-BS	270	18	175	87	154	6 7/8	3 7/16	6 1/16	[Diagram]	5.91	4.70	13.02	10.35	0.87	D
CTX20H (FA)	CTX20H-BS ⁷	320	18	175	87	154	6 7/8	3 7/16	6 1/16	[Diagram]	6.31	5.10	13.90	11.23	0.87	D
N/A	CTX20H-BSA	320	18	175	87	154	6 7/8	3 7/16	6 1/16	[Diagram]	N/A	5.10	N/A	11.23	0.87	P
CTX20L (FA)	CTX20L-BS	270	18	175	87	154	6 7/8	3 7/16	6 1/16	[Diagram]	5.91	4.70	13.02	10.35	0.87	D
CTX20HL (FA)	CTX20HL-BS ⁸	320	18	175	87	154	6 7/8	3 7/16	6 1/16	[Diagram]	6.31	5.10	13.90	11.23	0.87	D
N/A	CTX20HL-BSA	320	18	175	87	154	6 7/8	3 7/16	6 1/16	[Diagram]	N/A	5.10	N/A	11.23	0.87	P
CTX24HL (FA) ^{1,2}	CTX24HL-BS ^{1,2,10}	340	21	205	90	164	8 1/16	3 9/16	6 1/2	[Diagram]	7.70	5.90	16.96	13.00	1.20	D
CTX30L (FA)	CTX30L-BS	450	30	166	127	175	6 1/2	5	6 7/8	[Diagram]	10.15	8.20	22.36	18.06	1.48	D
N/A	CTX30L-BSA	450	30	166	127	175	6 1/2	5	6 7/8	[Diagram]	N/A	8.20	N/A	18.06	1.48	P
N/A	CTX30CL-B-BS ³	395	30	167	131	192	6 1/2	5 1/8	7 9/16	[Diagram]	N/A	8.10	N/A	17.84	1.56	D
U1-32 (U1-Rhino)	N/A	300	32	196	130	179	7 11/16	5 1/8	7	[Diagram]	13.04	N/A	28.72	N/A	N/A	M
U1-35R	N/A	350	35(20HR)	196	130	172	7 11/16	5 1/8	6 3/4	[Diagram]	12.34	N/A	27.18	N/A	N/A	R
51913 (FA)	N/A	190	19(20HR)	181	78	173	7 1/8	3 1/16	6 13/16	[Diagram]	6.06	N/A	13.35	N/A	N/A	I

¹ Top And Front Terminal Mounts Only.

² Eliminates Need For Sensor (Needs To Be Disabled).

³ Exact Fit Without Spacer.



⁷ CTX20H-BS Increased Capacity/CCA Compared To CTX20-BS.

⁸ CTX20HL-BS Increased Capacity/CCA Compared To CTX20L-BS.

⁹ CTX20CH-BS Increased Capacity/CCA Compared To CTX16-BS.

¹⁰ CTX24HL-BS Increased Capacity/CCA Compared To CTX18L-BS.

AGM - AVAILABLE IN TWO DESIGNS

Factory Activated (FA) Battery filled and charged at factory, Non-spillable.	Bottle Supplied (BS) Dry battery with acid pack, "Fresh Pack".
	

SPECIFICATIONS • Conventional Battery

12-VOLT ▼

BATTERY TYPE	CAPACITY AH (10HR)	MAXIMUM DIMENSIONS						ASSEMBLY FIGURE	WEIGHT WITHOUT ACID		ACID VOLUME (Liter)	TERMINAL (P.33)
		MILLIMETERS (±2 mm)			INCHES (±1/16 in)				KG	LBS		
		L	W	H	L	W	H					
CB2.5L-C	2.5	80	70	106	3 1/8	2 3/4	4 3/16		0.77	1.70	0.24	—
CB2.5L-C-1	2.5	80	70	106	3 1/8	2 3/4	4 3/16		0.77	1.70	0.24	—
CB2.5L-C-2	2.5	80	70	106	3 1/8	2 3/4	4 3/16		0.77	1.70	0.24	—
CB2.5L-C-3	2.5	80	70	106	3 1/8	2 3/4	4 3/16		0.77	1.70	0.24	—
CB3L-A	3	100	57	110	3 15/16	2 1/4	4 5/16		1.00	2.20	0.24	E
CB3L-B	3	100	57	110	3 15/16	2 1/4	4 5/16		1.00	2.20	0.24	E
CB4L-A	4	121	71	92	4 3/4	2 13/16	3 5/8		1.37	3.02	0.33	D
CB4L-B	4	121	71	92	4 3/4	2 13/16	3 5/8		1.37	3.02	0.33	D
CB5L-A	5	120	60	130	4 11/16	2 3/8	5 1/8		1.74	3.83	0.38	E
CB5L-B	5	120	60	130	4 11/16	2 3/8	5 1/8		1.74	3.83	0.38	E
CB6-A	6	136	71	97	5 5/16	2 3/4	3 3/4		1.46	3.22	0.38	E
CB6-B	6	136	71	97	5 5/16	2 3/4	3 3/4		1.46	3.22	0.38	E
CB6L-A	6	136	71	97	5 5/16	2 3/4	3 3/4		1.46	3.22	0.38	E
CB6L-B	6	136	71	97	5 5/16	2 3/4	3 3/4		1.46	3.22	0.38	E
CB6.5L-B	6.5	139	71	110	5 7/16	2 13/16	4 5/16		2.03	4.47	0.42	E
CB7-A	8	137	76	133	5 3/8	3	5 1/4		2.19	4.82	0.57	E
CB7A-A	8	137	77	149	5 3/8	3	5 7/8		2.22	4.89	0.57	E
CB7B-B	7	150	60	131	5 7/8	2 3/8	5 1/8		1.95	4.30	0.57	E
CB7BL-B	7	150	60	131	5 7/8	2 3/8	5 1/8		1.95	4.30	0.57	E
CB7C-A	8	132	92	116	5 3/16	3 5/8	4 9/16		2.10	4.63	0.57	A
CB7L-A	8	137	76	133	5 3/8	3	5 1/4		2.19	4.82	0.57	E
CB7L-B	8	137	76	133	5 3/8	3	5 1/4		2.19	4.82	0.57	E
CB9A-A	9	137	76	153	5 3/8	3	6		2.60	5.73	0.57	E
CB9-B	9	137	76	139	5 3/8	3	5 7/16		2.57	5.66	0.57	E
CB9L-B	9	137	76	139	5 3/8	3	5 7/16		2.57	5.66	0.57	E
CB9L-A2	9	137	76	139	5 3/8	3	5 7/16		2.57	5.66	0.57	B
CB10A-A2	11	135	90	155	5 5/16	3 9/16	6 1/16		3.40	7.49	0.75	G
CB10L-A2	11	135	90	145	5 5/16	3 9/16	5 11/16		3.30	7.27	0.75	G
CB10L-B	11	135	90	145	5 5/16	3 9/16	5 11/16		3.30	7.27	0.75	E
CB10L-B2	11	135	90	145	5 5/16	3 9/16	5 11/16		3.30	7.27	0.75	G
CB12A-A	12	134	80	160	5 1/4	3 1/8	6 5/16		3.20	7.05	0.75	E
SCB12A-A ¹²	12	134	80	160	5 1/4	3 1/8	6 5/16		3.20	7.05	0.75	E
CB12A-B	12	134	80	160	5 1/4	3 1/8	6 5/16		3.20	7.05	0.75	E
CB12AL-A ¹¹	12	134	80	160	5 1/4	3 1/8	6 5/16		3.20	7.05	0.75	E
CB12AL-A2 ¹¹	12	134	80	160	5 1/4	3 1/8	6 5/16		3.20	7.05	0.75	E
CB12B-B2	12	160	90	131	6 5/16	3 9/16	5 1/8		3.25	7.16	0.75	G
CB12C-A	12	135	80	174	5 5/16	3 1/8	6 13/16		3.09	6.81	0.75	D
CB14-A2	14	135	91	166	5 5/16	3 9/16	6 1/2		3.80	8.37	0.85	G
CB14-B2	14	135	91	166	5 5/16	3 9/16	6 1/2		3.80	8.37	0.85	G
CB14A-A1 ¹³	14	135	90	177	5 5/16	3 9/16	6 15/16		3.67	8.08	0.85	E
CB14A-A2 ¹³	14	135	90	177	5 5/16	3 9/16	6 15/16		3.67	8.08	0.85	D

¹¹ With L Shape Adapter (See Page 34).
¹² S=ELECTROLYTE SENSOR (See Page 34). Some Motorcycles Are Factory-Equipped With A Sensor To Monitor Electrolyte Levels.

(Continued)

SPECIFICATIONS • Conventional Battery

12-VOLT ▼

BATTERY TYPE	CAPACITY AH (10HR)	MAXIMUM DIMENSIONS						ASSEMBLY FIGURE	WEIGHT WITHOUT ACID		ACID VOLUME (Liter)	TERMINAL (P.33)
		MILLIMETERS (±2 mm)			INCHES (±1/16 in)				KG	LBS		
		L	W	H	L	W	H					
CB14L-A1	14	135	91	166	5 5/16	3 9/16	6 1/2		3.64	8.02	0.85	A
CB14L-A2	14	135	91	166	5 5/16	3 9/16	6 1/2		3.64	8.02	0.85	G
SCB14L-A2 ¹²	14	135	91	166	5 5/16	3 9/16	6 1/2		3.64	8.02	0.85	G
CB14L-B2	14	135	91	166	5 5/16	3 9/16	6 1/2		3.64	8.02	0.85	G
SCB14L-B2 ¹²	14	135	91	166	5 5/16	3 9/16	6 1/2		3.64	8.02	0.85	G
CB16-B	19	175	99	155	6 7/8	3 7/8	6 1/16		5.20	11.45	1.26	E
CB16-B-LM ¹⁵	19	173	99	156	6 13/16	3 7/8	6 1/8		5.07	11.17	1.26	E
CB16HL-A-LM ¹⁵	19	173	99	156	6 13/16	3 7/8	6 1/8		5.07	11.17	1.26	E
CB16L-A	19	175	99	155	6 7/8	3 7/8	6 1/16		5.20	11.45	1.26	E
CB16L-A2	19	175	99	155	6 7/8	3 7/8	6 1/16		5.20	11.45	1.26	D
CB16L-B	19	175	99	155	6 7/8	3 7/8	6 1/16		5.20	11.45	1.26	E
SCB16L-B ¹²	19	173	99	156	6 13/16	3 7/8	6 1/8		5.08	11.19	1.26	E
CB16AL-A2	16	206	70	164	8 1/16	2 3/4	6 7/16		4.20	9.25	1.10	B
CB16B-A	16	158	89	162	6 3/16	3 1/2	6 3/8		4.30	9.47	1.10	D
CB16B-A1	16	158	89	162	6 3/16	3 1/2	6 3/8		4.30	9.47	1.10	A
CB16B-A2	16	158	89	162	6 3/16	3 1/2	6 3/8		4.30	9.47	1.10	D
CB16C-B	19	173	99	175	6 13/16	3 7/8	6 7/8		5.14	11.32	1.26	D
CB16CL-B	19	175	100	175	6 7/8	3 15/16	6 7/8		5.20	11.45	1.26	D
HCB16A-A	16	150	90	181	5 7/8	3 9/16	7 1/8		3.90	8.59	1.10	F
HCB16A-AB	16	150	90	181	5 7/8	3 9/16	7 1/8		3.90	8.59	1.10	F
CB18-A	18	181	90	160	7 1/8	3 9/16	6 5/16		4.60	10.13	1.10	F
CB18L-A	18	181	90	160	7 1/8	3 9/16	6 5/16		4.60	10.13	1.10	F
CB18L-A2	18	181	90	160	7 1/8	3 9/16	6 5/16		4.60	10.13	1.10	F
C50-N18A-A	20	205	90	176	8 1/16	3 9/16	6 15/16		5.02	11.06	1.32	F
C50-N18L-A	20	205	90	162	8 1/16	3 9/16	6 3/8		4.90	10.79	1.32	F
C50-N18L-A2	20	205	90	162	8 1/16	3 9/16	6 3/8		4.90	10.79	1.32	F
C50-N18L-A3	20	205	90	162	8 1/16	3 9/16	6 3/8		4.90	10.79	1.32	D
C50-N18L-A-LM ¹⁵	20	205	90	162	8 1/16	3 9/16	6 3/8		5.17	11.39	1.32	F
SC50-N18L-A ¹²	20	205	90	162	8 1/16	3 9/16	6 3/8		4.90	10.79	1.32	F
SC50-N18L-AT ^{12,14}	20	205	90	162	8 1/16	3 9/16	6 3/8		4.90	10.79	1.32	F
C60-N24-A	28	184	125	170	7 1/4	4 15/16	6 11/16		6.60	14.54	1.74	C
C60-N24L-A	28	184	125	170	7 1/4	4 15/16	6 11/16		6.60	14.54	1.74	C
C60-N24L-A2	28	184	125	170	7 1/4	4 15/16	6 11/16		6.60	14.54	1.74	C
C60-N24AL-B	28	184	125	170	7 1/4	4 15/16	6 11/16		6.60	14.54	1.74	C
C60-N28L-A (52816)	26	185	129	170	7 1/4	5 1/16	6 5/8		6.60	14.54	1.74	I
C60-N30L-A	30	185	129	170	7 1/4	5 1/16	6 5/8		6.60	14.54	1.74	I
C60-N30L-B (53030)	27.9	185	129	170	7 1/4	5 1/16	6 5/8		6.60	14.54	1.74	I
CB30L-B	30	167	131	176	6 1/2	5 1/8	6 15/16		7.50	16.52	1.74	D
CB30CL-B	30	167	131	192	6 1/2	5 1/8	7 9/16		7.90	17.40	1.74	D
B68-12	28	184	125	170	7 1/4	4 15/16	6 11/16		6.70	14.76	1.74	C
CHD4-12 (H-12)	28	202	131	163	7 15/16	5 1/8	6 3/8		6.70	14.76	1.90	H

¹² S=ELECTROLYTE SENSOR (See Page 34). Some Motorcycles Are Factory-Equipped With A Sensor To Monitor Electrolyte Levels.

¹⁴ AT=WIRE LEAD (See Page 34).

¹⁵ LM (=YUASA "CX" BATTERY) Low Maintenance.

SPECIFICATIONS • Conventional Battery

12-VOLT ▼

BATTERY TYPE	CAPACITY AH (10HR)	MAXIMUM DIMENSIONS						ASSEMBLY FIGURE	WEIGHT WITHOUT ACID		ACID VOLUME (Liter)	TERMINAL (P.33)
		MILLIMETERS (±2 mm)			INCHES (±1/16 in)				KG	LBS		
		L	W	H	L	W	H					
12N5-3B	5	120	60	130	4 11/16	2 3/8	5 1/8		1.40	3.08	0.38	E
12N5-4B	5	120	60	130	4 11/16	2 3/8	5 1/8		1.40	3.08	0.38	E
12N5.5-3B	5.5	135	60	130	5 5/16	2 3/8	5 1/8		1.90	4.19	0.57	E
12N5.5-4A	5.5	135	60	130	5 5/16	2 3/8	5 1/8		1.90	4.19	0.57	B
12N5.5-4A-1	5.5	135	60	130	5 5/16	2 3/8	5 1/8		1.90	4.19	0.57	B
12N5.5-4B	5.5	135	60	130	5 5/16	2 3/8	5 1/8		1.90	4.19	0.57	E
12N5.5A-3B	5.5	105	91	115	4 1/8	3 9/16	4 1/2		1.60	3.52	0.40	E
12N7-3A	7	137	76	133	5 3/8	3	5 1/4		2.10	4.63	0.57	E
12N7-3B	7	137	76	133	5 3/8	3	5 1/4		2.10	4.63	0.57	E
12N7-3B-1	7	137	76	133	5 3/8	3	5 1/4		2.10	4.63	0.57	E
12N7-4A	7	137	76	133	5 3/8	3	5 1/4		2.10	4.63	0.57	E
12N7-4A-1	7	137	76	133	5 3/8	3	5 1/4		2.10	4.63	0.57	E
12N7-4B	7	137	76	133	5 3/8	3	5 1/4		2.10	4.63	0.57	E
12N7B-3A	7	150	60	131	5 7/8	2 3/8	5 1/8		1.80	3.96	0.57	E
12N7B-4A	7	150	60	131	5 7/8	2 3/8	5 1/8		1.80	3.96	0.57	E
12N7C-3D	7	132	92	116	5 3/16	3 5/8	4 9/16		2.10	4.63	0.57	A
12N7CZ-3D	8	132	92	116	5 3/16	3 5/8	4 9/16		2.10	4.63	0.57	A
12N7D-3B	7	135	76	149	5 5/16	3	5 7/8		2.12	4.67	0.57	E
12N9-3A	9	137	76	139	5 3/8	3	5 7/16		2.30	5.07	0.57	E
12N9-3A-1	9	137	76	139	5 3/8	3	5 7/16		2.30	5.07	0.57	E
12N9-3B	9	137	76	139	5 3/8	3	5 7/16		2.30	5.07	0.57	E
12N9-4B	9	137	76	139	5 3/8	3	5 7/16		2.30	5.07	0.57	E
12N9-4B-1	9	137	76	139	5 3/8	3	5 7/16		2.30	5.07	0.57	E
12N10-3A	10	135	90	145	5 5/16	3 9/16	5 11/16		3.00	6.61	0.75	E
12N10-3A-1	10	135	90	145	5 5/16	3 9/16	5 11/16		3.00	6.61	0.75	E
12N10-3A-2	10	135	90	145	5 5/16	3 9/16	5 11/16		3.00	6.61	0.75	G
12N10-3B	10	135	90	145	5 5/16	3 9/16	5 11/16		3.00	6.61	0.75	E
12N10-3B-1	10	135	90	145	5 5/16	3 9/16	5 11/16		3.00	6.61	0.75	E
12N11-3A	11	134	90	155	5 1/4	3 9/16	6 1/16		2.90	6.39	0.75	E
12N11-3A-1	11	134	90	155	5 1/4	3 9/16	6 1/16		2.90	6.39	0.75	G
12N11-3B	11	134	90	155	5 1/4	3 9/16	6 1/16		2.90	6.39	0.75	E
12N12A-4A-1	12	134	80	160	5 1/4	3 1/8	6 5/16		3.00	6.61	0.75	E
12N14-3A	14	135	91	166	5 5/16	3 9/16	6 1/2		3.20	7.05	0.85	G
12N14-3B	14	135	91	166	5 5/16	3 9/16	6 1/2		3.20	7.05	0.85	G
12N16-3A	16	173	99	156	6 13/16	3 7/8	6 1/8		4.30	9.47	1.26	E
12N16-3B	16	173	99	156	6 13/16	3 7/8	6 1/8		4.30	9.47	1.26	E
12N16-4B	16	173	99	156	6 13/16	3 7/8	6 1/8		4.30	9.47	1.26	E
12C16A-3A (51913)	17.7	185	81	169	7 1/4	3 3/16	6 5/8		5.30	11.67	1.10	I
12C16A-3B (51814)	17.7	185	81	169	7 1/4	3 3/16	6 5/8		5.30	11.67	1.10	I
12N18-3	18	205	90	162	8 1/16	3 9/16	6 3/8		4.30	9.47	1.32	K
12N18-3A	18	205	90	162	8 1/16	3 9/16	6 3/8		4.30	9.47	1.32	F
12N18-3B	18	205	90	162	8 1/16	3 9/16	6 3/8		4.30	9.47	1.32	F
12N24-3	24	185	125	167	7 1/4	4 15/16	6 9/16		6.00	13.22	1.74	C
12N24-3A	24	184	125	173	7 1/4	4 15/16	6 13/16		6.00	13.22	1.74	C
12N24-3B	24	184	125	173	7 1/4	4 15/16	6 13/16		6.00	13.22	1.74	C
12N24-4	24	185	125	167	7 1/4	4 15/16	6 9/16		6.00	13.22	1.74	C
12N24-4A	24	184	125	170	7 1/4	4 15/16	6 11/16		6.00	13.22	1.74	C

SPECIFICATIONS • Conventional Battery

DIN CONVENTIONAL TYPE (EUROPEAN MADE VEHICLES)

12-VOLT ▼

BATTERY TYPE	CAPACITY AH (20HR) ¹⁶	MAXIMUM DIMENSIONS						ASSEMBLY FIGURE	WEIGHT WITHOUT ACID		ACID VOLUME (Liter)	TERMINAL (P.33)
		MILLIMETERS (±2 mm)			INCHES (±1/16 in)				KG	LBS		
		L	W	H	L	W	H					
51913 (12C16A-3A)	19 ¹⁶	185	81	169	7 1/4	3 3/16	6 5/8		5.30	11.67	1.10	I
51814 (12C16A-3B)	19 ¹⁶	185	81	169	7 1/4	3 3/16	6 5/8		5.30	11.67	1.10	I
52515 (C60-N25L-A)	25 ¹⁶	185	129	170	7 1/4	5 1/16	6 5/8		7.30	16.08	1.74	I
52816 (C60-N28L-A)	28 ¹⁶	185	129	170	7 1/4	5 1/16	6 5/8		6.60	14.54	1.74	I
53030 (C60-N30L-B)	30 ¹⁶	185	129	170	7 1/4	5 1/16	6 5/8		6.60	14.54	1.74	I
53034 ²¹	30 ¹⁶	187	128	167	7 5/16	5	6 9/16		6.60	14.54	1.74	I

¹⁶ DIN Standard Is Based On 20HR Capacity Rate.

²¹ 53034 With Build-In Handle For Easy Installation And Revomal.

Yacht Wire Lead Adapter Kit reduces 32 SKU's to 4 SKU's

Match the correct wire pigtail to your UNV battery.
Snap the correct lead to each wire terminal end.



SPECIFICATIONS • Conventional Battery

6-VOLT ▼

BATTERY TYPE	CAPACITY AH (10HR)	MAXIMUM DIMENSIONS						ASSEMBLY FIGURE	WEIGHT WITHOUT ACID		ACID VOLUME (Liter)	TERMINAL (P.33)
		MILLIMETERS (±2 mm)			INCHES (±1/16 in)				KG	LBS		
		L	W	H	L	W	H					
6N2-2A / UNV ¹⁷	2	70	46	97	2 3/4	1 13/16	3 13/16		0.40	0.88	0.15	—
6N2-2A-1	2	70	46	97	2 3/4	1 13/16	3 13/16		0.40	0.88	0.15	—
6N2-2A-2	2	70	46	97	2 3/4	1 13/16	3 13/16		0.40	0.88	0.15	—
6N2-2A-3	2	70	46	97	2 3/4	1 13/16	3 13/16		0.40	0.88	0.15	—
6N2-2A-4	2	70	46	97	2 3/4	1 13/16	3 13/16		0.40	0.88	0.15	—
6N2-2A-5	2	70	46	97	2 3/4	1 13/16	3 13/16		0.40	0.88	0.15	—
6N2-2A-6	2	70	46	97	2 3/4	1 13/16	3 13/16		0.40	0.88	0.15	—
6N2-2A-7	2	70	46	97	2 3/4	1 13/16	3 13/16		0.40	0.88	0.15	—
6N2-2A-8	2	70	46	97	2 3/4	1 13/16	3 13/16		0.40	0.88	0.15	—
6N2A-2C / UNV ¹⁷	2	71	47	105	2 13/16	1 7/8	4 1/8		0.40	0.88	0.15	—
6N2A-2C-1	2	71	47	105	2 13/16	1 7/8	4 1/8		0.40	0.88	0.15	—
6N2A-2C-2	2	71	47	105	2 13/16	1 7/8	4 1/8		0.40	0.88	0.15	—
6N2A-2C-3	2	71	47	105	2 13/16	1 7/8	4 1/8		0.40	0.88	0.15	—
6N4-2A / UNV ¹⁷	4	71	71	94	2 13/16	2 13/16	3 11/16		0.60	1.32	0.24	—
6N4-2A-1	4	71	71	94	2 13/16	2 13/16	3 11/16		0.60	1.32	0.24	—
6N4-2A-2	4	71	71	94	2 13/16	2 13/16	3 11/16		0.60	1.32	0.24	—
6N4-2A-3	4	71	71	94	2 13/16	2 13/16	3 11/16		0.60	1.32	0.24	—
6N4-2A-4	4	71	71	94	2 13/16	2 13/16	3 11/16		0.60	1.32	0.24	—
6N4-2A-5	4	71	71	94	2 13/16	2 13/16	3 11/16		0.60	1.32	0.24	—
6N4-2A-6	4	71	71	94	2 13/16	2 13/16	3 11/16		0.60	1.32	0.24	—
6N4-2A-7	4	71	71	94	2 13/16	2 13/16	3 11/16		0.60	1.32	0.24	—
6N4-2A-8	4	71	71	94	2 13/16	2 13/16	3 11/16		0.60	1.32	0.24	—

¹⁷ New UNV Wire Lead Kit Replaces The Need To Stock Multiple Part Numbers In The Same Family.

SPECIFICATIONS • Conventional Battery

6-VOLT ▼

BATTERY TYPE	CAPACITY AH (10HR)	MAXIMUM DIMENSIONS						ASSEMBLY FIGURE	WEIGHT WITHOUT ACID		ACID VOLUME (Liter)	TERMINAL (P.33)
		MILLIMETERS (±2 mm)			INCHES (±1/16 in)				KG	LBS		
		L	W	H	L	W	H					
6N4B-2A / UNV 17	4	101	47	95	3 15/16	1 7/8	3 3/4		0.70	1.54	0.24	—
6N4B-2A-1	4	101	47	95	3 15/16	1 7/8	3 3/4		0.70	1.54	0.24	—
6N4B-2A-2	4	101	47	95	3 15/16	1 7/8	3 3/4		0.70	1.54	0.24	—
6N4B-2A-3	4	101	47	95	3 15/16	1 7/8	3 3/4		0.70	1.54	0.24	—
6N4B-2A-4	4	101	47	95	3 15/16	1 7/8	3 3/4		0.70	1.54	0.24	—
6N4B-2A-5	4	101	47	95	3 15/16	1 7/8	3 3/4		0.70	1.54	0.24	—
6N2-2D	2	70	46	97	2 3/4	1 13/16	3 13/16		0.40	0.88	0.15	—
6N4A-4D	4	57	61	130	2 1/4	2 3/8	5 1/8		0.70	1.54	0.24	—
6N4A-4D-1	4	57	61	130	2 1/4	2 3/8	5 1/8		0.70	1.54	0.24	—
6N4C-1B	4	69	70	104	2 11/16	2 3/4	4 1/16		0.60	1.32	0.24	—
6N5.5-3D	5.5	88	70	98	3 7/16	2 3/4	3 7/8		0.80	1.76	0.24	—
6N5.5-1D	5.5	88	70	98	3 7/16	2 3/4	3 7/8		0.80	1.76	0.24	—
6N5.5-1D-1	5.5	88	70	98	3 7/16	2 3/4	3 7/8		0.80	1.76	0.24	—
6N6-1B	6	99	56	109	3 7/8	2 3/16	4 1/4		0.80	1.76	0.24	—
6N6-1B-1	6	99	56	109	3 7/8	2 3/16	4 1/4		0.80	1.76	0.24	—
6N6-3B	6	99	58	109	3 7/8	2 1/4	4 1/4		0.80	1.76	0.24	E
6N6-3B-1	6	99	58	109	3 7/8	2 1/4	4 1/4		0.80	1.76	0.24	E
6N6-1D	6	99	56	109	3 7/8	2 3/16	4 1/4		0.80	1.76	0.24	—
6N6-1D-2	6	99	56	109	3 7/8	2 3/16	4 1/4		0.80	1.76	0.24	—
6N6-1C	6	98	56	108	3 7/8	2 3/16	4 1/4		0.80	1.76	0.24	—
B39-6 (6N7-1)	7	125	48	125	4 15/16	1 7/8	4 15/16		0.90	1.98	0.24	E
B49-6	10	90	83	161	3 9/16	3 1/4	6 5/16		1.40	3.08	0.42	E
6N11-2D	11	148	69	103	5 13/16	2 11/16	4 1/16		1.50	3.30	0.42	E
6N11A-1B (6N12AH)	11	120	60	131	4 11/16	2 3/8	5 1/8		1.60	3.52	0.57	E
6N11A-3	11	120	60	131	4 11/16	2 3/8	5 1/8		1.60	3.52	0.57	E
6N11A-4	11	120	60	131	4 11/16	2 3/8	5 1/8		1.60	3.52	0.57	E
6N11A-3A	11	120	60	131	4 11/16	2 3/8	5 1/8		1.60	3.52	0.57	E
6N11A-4A	11	120	60	131	4 11/16	2 3/8	5 1/8		1.60	3.52	0.57	E
6N11-4D	11	148	69	103	5 13/16	2 11/16	4 1/16		1.50	3.30	0.42	E
ML3-6P	11	123	92	139	4 13/16	3 5/8	5 7/16		2.20	4.85	0.75	E
6N12A-2C (B54-6)	12	154	55	115	6 1/16	2 3/16	4 1/2		1.77	3.90	0.42	E
6N12A-2D (B54-6A)	12	154	55	115	6 1/16	2 3/16	4 1/2		1.77	3.90	0.42	E
B38-6A	13	117	82	160	4 5/8	3 1/4	6 5/16		1.80	3.96	0.57	K
6CB8-3B (6CB8L-B)	8	119	71	97	4 11/16	2 13/16	3 13/16		1.30	2.86	0.42	E
6CB11-2D	11	148	69	98	5 13/16	2 11/16	3 7/8		1.50	3.30	0.42	E

17 New UNV Wire Lead Kit Replaces The Need To Stock Multiple Part Numbers In The Same Family.

MOTORCYCLE/SCOOTER BATTERY APPLICATIONS



CC	Year	Model	High Performance Maintenance-Free /VRLA	Maintenance-Free AGM	High Performance (CB) Conventional	Conventional Flooded	CC	Year	Model	High Performance Maintenance-Free /VRLA	Maintenance-Free AGM	High Performance (CB) Conventional	Conventional Flooded
AERMACCHI (Harley-Davidson)													
350	—	Aia, Azzurra, Bianca	—	—	—	6N11A-1B	50	00-03	Scarabeo 50	—	—	CB4L-B	—
350	—	Ala Oro, Rossa, Verde	—	—	—	6N11A-1B	50	04-05	RS50 / Rally	—	—	CB4L-B	—
250	—	Aia, Azzurra, Bianca	—	—	—	6N11A-1B	850	12-13	SRV850	CTX14H-BS	CTX14-B	—	—
250	—	Chimera	—	—	B39-6	—	500	09-13	Scarabeo	—	—	—	—
250	—	SX	—	—	CB7L-B	12N7-3B	300	-12	Atlantic	—	—	—	CB12AL-A
175	—	SX	—	—	CB7L-B	12N7-3B	250	09-13	Sport City	—	—	CTX12-B	—
125	—	SX	—	—	CB7L-B	12N7-3B	200	09-13	Scarabeo	—	—	—	CB12AL-A
150	09-10	Mojito	—	—	—	—	150	09-10	Mojito	—	—	CTX7L-BS	—
125	08-13	Sport City	—	—	—	—	125	08-13	Sport City	—	—	—	CB9-B
100	09-13	Scarabeo ST	—	—	—	—	100	09-13	Scarabeo ST	—	—	—	—
50	08-15	SR50, Sport City	—	—	—	—	50	08-15	SR50, Sport City	—	—	—	CB9-B
50	13-14	SR50 R Factory, Replica SBK	—	—	—	—	50	13-14	SR50 R Factory, Replica SBK	—	—	—	CB9-B
APRILIA													
1200	11-16	Dorsoduro, Caponord	CTX14H-BS	CTX14-BS	—	—	—	—	—	—	—	—	—
1100	14-16	Tuono V4 1100, RR	—	CTX12A-BS	—	—	—	—	—	—	—	—	—
1000	09-15	RSV4 R, Factory	CTZ10S ^{FA}	CTZ10S-BS	—	—	—	—	—	—	—	—	—
1000	02-03	ETV Caponord	CTX14H-BS	CTX14-BS	—	—	—	—	—	—	—	—	—
1000	01-04	RST Futura	—	CTX12-BS	—	—	—	—	—	—	—	—	—
1000	99-03	RSV1000 Mille, RSV1000 Mille SP	—	CTX12-BS	—	—	—	—	—	—	—	—	—
1000	04-11	RSV1000 R Factory	—	CTX12-BS	—	—	—	—	—	—	—	—	—
1000	01-05	RSV1000 Mille R	—	CTX12-BS	—	—	—	—	—	—	—	—	—
1000	00	RSV1000 Mille	—	CTX12-BS	—	—	—	—	—	—	—	—	—
1000	01-09	RSV1000 Mille	—	CTX12-BS	—	—	—	—	—	—	—	—	—
1000	11-13	Tuono V4R	CTZ10S ^{FA}	CTZ10S-BS	—	—	—	—	—	—	—	—	—
1000	01-03	SL1000 Falco	CTX14H-BS	CTX14-BS	—	—	—	—	—	—	—	—	—
1000	03-11	Tuono 1000 R, Factory	—	CTX12-BS	—	—	—	—	—	—	—	—	—
850	09-13	MANA850, GT	CTX14H-BS	CTX14-BS	—	—	—	—	—	—	—	—	—
750	09-16	Dorsoduro	CTX14H-BS	CTX14-BS	—	—	—	—	—	—	—	—	—
750	09-16	Shiver	CTX14H-BS	CTX14-BS	—	—	—	—	—	—	—	—	—
655	—	Pegaso 655	CTX14AHL-BS	—	CB14L-A2	—	654	80-85	Sport T	CTX14AHL-BS	—	CB14L-A2	—
650	—	ETX 650 (Electric-start)	CTX14AHL-BS	—	CB14L-A2	—	650	—	1A Serie Tornado	—	—	—	B49-6
650	—	ETX 650 (Kick-start)	—	—	—	12N5.5-3B	650	—	650 Tornado U.T.	—	—	CB12A-A	12N12A-4A-1
650	—	Moto 6.5	—	—	CB12AL-A	—	504	—	504 (4-Cyl)	CTX14AHL-BS	—	CB14L-A2	12N14-3A
650	00	Pegaso 650	—	—	CB12AL-A	—	504	—	Sport T	—	—	—	—
650	09-12	Pegaso Strada, Factory, Trail	—	CTX12-BS	—	—	500	—	500	—	—	CB12A-A	—
650	—	650 Pegaso, 600 Pegaso	CTX14AHL-BS	—	CB14L-A2	—	500	—	500 LS	CTX14AHL-BS	—	CB14L-A2	—
600	—	ETX 650 (Electric-start)	CTX14AHL-BS	—	CB14L-A2	—	500	—	500LS Quattro	51913 (FA)	—	51814	12C16A-3B
600	—	ETX 650 (Kick-start)	—	—	—	12N5.5-3B	491	—	491K2	—	—	CB4L-B	—
600	91-92	Pegaso	CTX14AHL-BS	—	CB14L-A2	—	354	78-89	354 (4-Cyl)	—	—	CB9-B	—
600	87-92	Tuareg, Wind, ETX	CTX14AHL-BS	—	CB14L-A2	—	354	80-82	354 Sport	CTX14AHL-BS	—	CB14L-A2	12N14-3A
550	-10	RVX550	—	CTX7A-BS	—	—	254	80-82	254 (4-Cyl)	—	—	CB9-B	12N9-4B-1
550	-10	SVX550	—	CTX7A-BS	—	—	250	—	250 (4 Cilindri)	—	—	CB12A-A	—
500	04-05	Scarabeo	CTX14AHL-BS	—	CB14L-A2	—	250	—	250-4T, 250SS (70°)	—	—	—	B49-6
500	03-05	Atlantic 500	CTX14AHL-BS	—	CB14L-A2	—	250	—	250-2C	—	—	—	6N11A-1B
450	-10	RVX450	—	CTX7A-BS	—	—	250	99	Velvet	—	CTX9-BS	—	—
450	-10	SVX450	—	CTX7A-BS	—	—	175	—	175-4T	—	—	—	B49-6
350	85	ETX 350 (Electric-start)	CTX14AHL-BS	—	CB14L-A2	—	150	00	Advia	—	—	CB9-B	—
350	85	ETX 350 (Kick-start)	—	—	—	12N5.5-3B	150	99	Velvet	—	CTX9-BS	—	—
350	87-88	Tuareg, Wind	CTX14AHL-BS	—	CB14L-A2	—	125	—	Cross, 125T Sport, 125-2 CSE	—	—	—	6N11A-1B
250	—	ETX 250 (Electric-start)	CTX14AHL-BS	—	CB14L-A2	—	125	—	125 Guzzi, 125 Custom Guzzi	—	—	—	12N5.5-4A
250	—	ETX 250 (Kick-start)	—	—	—	12N5.5-3B	125	—	125 Jarno (c / avv.)	—	—	CB9-B	12N9-4B-1
250	—	Leonardo 250	—	—	CB12AL-A	—	125	—	125 Scooter Benelli	—	—	CB9L-B	12N9-3B
250	00-04	RS 250	—	—	CB4L-B	—	125	—	125-4T	—	—	—	B49-6
250	—	STX250	—	—	—	12N5.5-3B	125	—	125 CS	—	—	CB9-B	12N9-4B-1
200	04-05	Atlantic	—	—	CB12AL-A	—	50	81	C2 Long St	—	—	CB4L-B	—
200	—	Scarabeo	—	—	CB12AL-A	—	50	—	Devil 50 (c / avv.)	—	—	CB4L-B	—
200	—	STX 200	—	—	—	12N5.5-3B	50	—	G2, KBX 50 Race	—	—	CB4L-B	—
150	00-04	Leonardo 150, Scarabeo 150	—	—	CB12AL-A	—	50	—	Scooty LX, Scooty DLX	—	—	CB4L-B	—
150	04-05	Mojito, SR150	—	CTX7L-BS	—	—	50	76	Sprint	—	—	CB4L-B	—
125	91-00	AF-1 125 Futura, Europa, Project, Sport, Sintesi	—	—	CB9-B	—	—	—	—	—	—	—	—
125	92-00	AF-1 125 Replica	—	—	—	12N5.5-3B	125	00-01	Eilon, Afrika	—	—	CB4L-B	—
125	—	AS 125 R	—	—	—	12N5.5-3B	75	00-01	Supermoto	—	—		

MOTORCYCLE/SCOOTER BATTERY APPLICATIONS



CC	Year	Model	High Performance Maintenance-Free / VRLA	Maintenance-Free AGM	High Performance (CB) Conventional	Conventional Flooded	CC	Year	Model	High Performance Maintenance-Free / VRLA	Maintenance-Free AGM	High Performance (CB) Conventional	Conventional Flooded
BIMOTA							BUJELL						
1100	95-97	SB6, SB7 (Requires 2 Batteries)	—	CTX7L-BS (x2)	—	—	—	—	500	Gold Star (6-V)	—	—	B38-6A
1100	97-99	SB6R	—	CTX12-BS	—	—	—	—	250, 350, 650 (6-V)	—	—	—	B39-6
1000	92-95	YB8, YB10	CTX14AHL-BS	—	CB14L-A2	—	1200	99-02	X1 Lightning (Must Be Factory Activated / Factory Sealed Battery)	CTX20HL (FA) 18	CTX20L (FA) 18	—	—
1000	96-99	YB11	—	CTX12-BS	—	—	1200	96-99	S1 Lightning 19 (Must Use Adaptor Kit Available From Buell)	CTX14H-BS 19	CTX14-B 19	—	—
996	98-00	SB8R, SB8RS	—	CTX12-BS	—	—	1200	97-02	S3 Thunderbolt, S3T Thunderbolt, M2 Cyclone	CTX20HL-BS	CTX20L-BS	—	—
900	93-95	DB2	CTX14AH-BS	—	CB14-A2	—	1200	94-96	S2 Thunderbolt, S2T Thunderbolt	—	CTX19-BS	CB16-B-LM 1/16-B	12N16-4B
900	97	DB2 Final Edition	CTX14AH-BS	—	CB14-A2	—	1200	88-93	RR1200, RS1200, RSS1200	—	CTX19-BS	CB16-B-LM 1/16-B	12N16-4B
900	97-99	DB3 Mantra (Requires 2 Batteries)	—	CTX7L-BS (x2)	—	—	1200	04-10	XB12R Firebolt, XB12Ss, Sog. Lightning (Must Be Factory Activated / Factory Sealed Battery)	CTX14H (FA) 18	CTX14 (FA) 18	—	—
BIMW							CAGIVA						
1600	11-16	K1600GT, GTL	51913 (FA)	—	51913	12C16A-3A	1000	00	Raptor (All Models)	CT12A-BS 1A	CTX12A-BS	—	—
1300	09-11	K1300GT	51913 (FA)	—	51913	12C16A-3A	900	—	Elefant E900	—	—	CB16B-A1	—
1300	09-16	K1300R, S	CTX14H-BS	CTX14-BS	—	—	900	97	Canyon I.E.	—	CTX19-BS	CB16-B-LM 1/16-B	12N16-4B
1200	09-16	R1200GS Adventure, R1200GS	CTZ14S 1A	—	—	—	750	94-97	Elefant	—	CTX19-BS	CB16-B-LM 1/16-B	12N16-4B
1200	05-13	R1200RT	51913 (FA)	—	51913	12C16A-3A	750	89	Elefant Bifaro	CTX14AHL-BS	—	CB14L-A2	—
1200	-11	HP2 Sport / Megamoto	CTX14H-BS	CTX14-BS	—	—	650	86	Elefant	CTX14AHL-BS	—	CB14L-A2	—
1200	05-16	K1200R / S, R1200GS / S / R / RS	CTX14H-BS	CTX14-BS	—	—	650	01	Raptor	—	CTX9-BS	—	—
1200	99-09	K1200LT / GT / RS / S / R	51913 (FA)	—	51913	12C16A-3A	600	97	V-Raptor	—	—	CB9-B	—
1200	98-05	R1200C	51913 (FA)	—	51913	12C16A-3A	600	00	Canyon, River, W16	CTX14AHL-BS	—	CB14L-A2	—
1170	14-16	R nine T	—	CTX14-BS	—	—	500	88-	T4 E Elefant	CTX14AHL-BS	—	CB14L-A2	—
1170	—	R nine T Scrambler	CTX14H-BS	CTX14-BS	—	—	500	—	Cagiva, River	CTX14H-BS	CTX14-BS	—	—
1150	00-06	R1150GS, R1150R, RS, RT	51913 (FA)	—	51913	12C16A-3A	500	—	EGS	—	—	CB7L-B	12N7-3B
1100	90-95	K1100LT, K1100RS	51913 (FA)	—	51913	12C16A-3A	900	97	EGS	—	—	—	12N5.5-4A
1100	94-00	R1100GS, R1100R	51913 (FA)	—	51913	12C16A-3A	750	89	EGS	—	—	—	12N7-3B
1100	93-00	R1100RS, R1100RT	51913 (FA)	—	51913	12C16A-3A	750	89	EGS	—	—	—	12N5.5-4A
1100	98-05	R1100S, ABS	51913 (FA)	—	51913	12C16A-3A	650	86	EGS	—	—	—	12N5.5-4A
1000	14-16	S1000R	CTZ10S 1A	—	—	—	650	01	Raptor	—	—	—	—
1000	09-13	S1000RR	CTZ10S 1A	—	—	—	650	00	V-Raptor	—	—	—	—
1000	09-15	S1000RR, S1000RR (w / Alarm)	CTZ10S 1A	CTZ10S-BS	—	—	600	97	Canyon, River, W16	CTX14AHL-BS	—	CB14L-A2	—
1000	09-11	S1000RR DWA	CTZ12S 1A	CTZ12S-BS	—	—	500	88-	T4 E Elefant	CTX14AHL-BS	—	CB14L-A2	—
1000	83-93	All 1000-K Models	CTX30L (FA)	CTX30L-BS	53030	C60-N30L-B	500	—	Cagiva, River	CTX14H-BS	CTX14-BS	—	—
1000	76-84	R100 / 7, 100RS	CTX30L (FA)	CTX30L-BS	53030	C60-N30L-B	400	—	EGS	—	—	—	12N7-3B
1000	83	K100S, K100RT	CTX30L (FA)	CTX30L-BS	53030	C60-N30L-B	350	—	EGS	—	—	—	12N5.5-4A
1000	77-94	All 1000-R Models	CTX30L (FA)	CTX30L-BS	53030	C60-N30L-B	350	—	EGS	—	—	—	12N7-3B
1000	76-84	R100GS	CTX30L (FA)	CTX30L-BS	53030	C60-N30L-B	350	86-	Elefant (2-Cyl)	CTX14AHL-BS	—	CB14L-A2	—
1000	13-14	HP4 (w / Alarm System)	CTZ10S 1A	—	—	—	350	87	T4 R	—	—	CB3L-B	—
1000	13-14	HP4 (w / o Alarm System)	CTZ7S 1A	CTZ7S-BS	—	—	350	—	SXT, SST	—	—	CB7L-B	12N7-3B
1000	87-95	R100GS, PD, R, RS, RT	CTX30L (FA)	CTX30L-BS	53030	C60-N30L-B	350	87	T4 E Elefant, W12	CTX14AHL-BS	—	CB14L-A2	—
1000	14-16	S1000RR DWA	CTZ10S 1A	—	—	—	350	87-	T4R	—	—	CB3L-B	—
1000	16	S1000XR	—	CTX9-BS	—	—	250	—	DATT, EGS, SST, SX	—	—	CB7L-B	12N7-3B
1000	16	S1000XR DWA	CTZ10S 1A	—	—	—	200	—	Elefant	—	—	—	12N5.5-4A
900	69-76	R90 / 6, R90S	CTX30L (FA)	CTX30L-BS	53030	C60-N30L-B	200	—	Roadster	—	—	CB9-B	—
850	95-97	R850R	51913 (FA)	—	51913	12C16A-3A	125	—	Aletta Oro (Electric-start), Blues	—	—	CB12A-A	—
800	08-16	F800ST, GS, GT, R, ADV	CTX14H-BS	CTX14-BS	—	—	125	87-88	Crouser	—	—	CB9-B	—
800	13-16	F800GS, GT (Auxiliary Battery)	CTZ14S 1A	—	—	—	125	—	EG	—	—	CB7L-B	12N7-3B
800	84-95	R80, R80RT	CTX30L (FA)	CTX30L-BS	53030	C60-N30L-B	125	—	Elefant	—	—	—	12N5.5-4A
800	80-96	R80GS, R80ST	51913 (FA)	—	51814	12C16A-3B	125	—	Elefantre	—	—	CB12A-A	—
800	78-84	R80 / 7, R80RT	CTX30L (FA)	CTX30L-BS	53030	C60-N30L-B	125	87-90	EV, Freccia C9, C10R, C12R	—	—	CB9-B	—
750	85-95	All K75, RT Models	CTX30L (FA)	CTX30L-BS	53030	C60-N30L-B	125	—	GP S (Electric-start)	—	—	CB12A-A	—
750	85-95	K75, K75C, K75S	51913 (FA)	—	51814	12C16A-3B	125	—	P S (Kick-start), HD	—	—	—	12N5.5-4A
750	87-93	K75, K75C, K75S	—	—	52515	C60-N25L-A	125	—	K7	—	—	CB4L-B	—
750	92-96	K75, K75RT	51913 (FA)	—	51913	12C16A-3A	125	90-97	Mito, Racing, Lawson	—	—	CB9-B	—
750	70-73	R75 / 5	51913 (FA)	—	51814	12C16A-3B	125	97	N 90 (Electric-start)	—	—	CB9-B	—
750	69-84	R75 / 6, R75 / 7	CTX30L (FA)	CTX30L-BS	53030	C60-N30L-B	125	94-97	Roadster	—	—	CB9-B	—
700	55-69	R69, R69S	—	—	B38-6A	—	125	91-97	Supercity	—	—	CB9-B	—
700	13-16	F700GS (Auxiliary Battery)	CTZ14S 1A	—	—	—	125	—	SS	—	—	CB7L-B	12N7-3B
700	13-16	F700GS	CTX14H-BS	CTX14-BS	—	—	125	—	SST (Kick-start), SXT / WSXT (Kick-start)	—	—	—	12N5.5-4A
650	08-15	C650GT, F650GS	CTX14H-BS	CTX14-BS	—	—	125	—	SST (Electric-start)	—	—	CB12A-A	—
650	93-16	F650, G650GS	—	—	CB12AL-A	—	125	—	Tamanac	—	—	CB9-B	—
650	84-95	R65	CTX30L (FA)	CTX30L-BS	53030	C60-N30L-B	125	—	W8	—	—	CB4L-B	—
650	78-84	R65LS	51913 (FA)	—	51814	12C16A-3B	50	94-97	City, Cucciolo, Lucky, Explorer	—	—	CB4L-B	—
600	13-14	C600, C600 Sport	CTX14H-BS	CTX14-BS	—	—	50	—	Mito, Cocis, Prima, Mantis, Super city (Electric-start)	—	—	CB4L-B	—
600	11-12	C600	CTZ14S 1A	—	—	—	50	98	K3, W4	—	—	CB4L-B	—
BOMBARDIER-CAN-AM							CANNONDALE						
600	55-69	R60, R60 / 2 (Twin Cylinders)	—	—	B38-6A	—	1330	14-17	Spyder RT (SE6), (SM6), Limited (SE6) / RT-S (SE6), (SM6)	CTX24HL (FA)	—	—	—
600	70-73	R60 / 5	51913 (FA)	—	51913	12C16A-3A	1000	13-14	Spyder ST (SE5), (SM5), Limited (SE5) / ST-S (SE5), (SM5)	CTX24HL (FA)	—	—	—
600	69-84	R60 / 6, R60 / 7	CTX30L (FA)	CTX30L-BS	53030	C60-N30L-B	998	08-16	Spyder (RS)	CTX24HL (FA)	—	—	—
500	55-69	R50 / 2 (Twin Cylinders)	—	—	B38-6A	—	998	08-16	Spyder (RS)	CTX24HL (FA)	—	—	—
500	70-73	R50 / 5	51913 (FA)	—	51814	12C16A-3B	990	08-12	Spyder	CTX24HL (FA)	—	—	—
500	55-69	R50 / S (Twin Cylinders)	—	—	B38-6A	—	500	87	T4 E, Elefant, W12	CTX14AHL-BS	—	—	CB14L-A2
450	09-11	G450	CTZ7S 1A	CTZ7S-BS	—	—	250	96-01	All Models	—	—	—	12N5-4B
260	—	R26	—	—	B39-6	—	175	96-01	All Models	—	—	—	12N5-4B
260	55-69	R26, R27 (Single Cylinder)	—	—	—	6N11A-1B	125	96-01	All Models (Ex. Roadster & Super city)	—	—	—	12N5-4B
250	54	R25, (Twin Cylinders)	—	—	ML3-6P	—	50	94-97	City 50 / Lucky Explorer	—	—	—	—
BMW SCOOTERS							CCM						
650	11-16	C650 GT, Sport	—	CTX14-BS	—	—	440	02-03	C440, E440, S440, X440, X440S	CTZ7S 1A	CTZ7S-BS	CTX5L-BS	—
600	13-16	C600, Sport	—	CTX14-BS	—	—	440	00-01	EX400, MX400, XC400	CTZ7S 1A	CTZ5L-BS	CT5L-BS	—
600	11-12	C600	CTZ14S 1A	—	—	—	DAZON						
BSA							DAZON						
—	—	Rocket 750, Thunderbolt	—	—	CB9L-B	12N9-3B	600	96-01	All Electric Start Models	—	CTX9-BS	—	—
—	—	Spitfire HK35, Starfire B25	—	—	CB9L-B	12N9-3B	250	—	Raider - Classic / Max (Kart)	—	CTX9-BS	—	—
—	—	250, 350, 400, 441, 500, 600, 650, 750 (12-V)	—	—	CB7-A	12N7-4A	150	04	Raider - Classic / Max (Kart)	—	CTX9-BS	—	—

FA= Factory Activated And Factory Sealed Battery. (x2) Marked Bike Requires 2 Batteries. Battery Item No.12C16A-3B =12N16AH.

LM (=YUASA 'CX' BATTERY) Low Maintenance. 18 Must Be Factory Activated / Factory Sealed Battery. 19 Must Use Adaptor Kit Available From Buell. (Continued)

MOTORCYCLE/SCOOTER BATTERY APPLICATIONS



CC	Year	Model	High Performance Maintenance-Free / VRLA	Maintenance-Free AGM	High Performance (CB) Conventional	Conventional Flooded	CC	Year	Model	High Performance Maintenance-Free / VRLA	Maintenance-Free AGM	High Performance (CB) Conventional	Conventional Flooded
DERBI							DUCATI						
—	—	All Models	—	—	CB4L-B	—	696	08-14	Monster 696, Monster 696 ABS	CT12B-4 1A	CT12B-BS	—	—
695	07	Multistrada	—	—	—	—	69						

MOTORCYCLE/SCOOTER BATTERY APPLICATIONS



CC	Year	Model	High Performance Maintenance-Free / VRLA	Maintenance-Free AGM	High Performance (CB) Conventional	Conventional Flooded	CC	Year	Model	High Performance Maintenance-Free / VRLA	Maintenance-Free AGM	High Performance (CB) Conventional	Conventional Flooded
125	—	Freestyle (Kick-start)	—	—	—	12N5.5-3B	900	52-66	Sportster	—	—	H-2	—
125	—	GFR (Electric-start)	—	—	CB9-B	—	883	86-96	XLH Sportster	CTX19 (FA)	CTX19-BS	CB16-B-LM ¹⁵ /16-B	12N16-4B
125	—	GFR (Kick-start)	—	—	—	12N5.5-3B	883	97-03	XL, XLH (Sportster)	CTX20HL-BS	CTX20L-BS	—	—
125	—	KK, KZ (Electric-start)	—	—	CB9-B	—	883	04-17	XL, XLH (Sportster)	—	CTX14L-BS	—	—
125	—	KK, KZ (Kick-start)	—	—	—	12N5.5-3B	750	14-17	Street	—	CTX14L-BS	—	—
125	—	MX1, MXR (Electric-start)	—	—	CB9-B	—	750	32-63	Servi-Car	—	—	H-2	—
125	—	MX1, MXR (Kick-start)	—	—	—	12N5.5-3B	500	14-17	Street	—	CTX14L-BS	—	—
125	—	Nebraska (Electric-start)	—	—	CB9-B	—	500	All Years	MT500 (Military)	CTX14AHL-BS	—	CB14L-A2	—
125	—	Nebraska (Kick-start)	—	—	—	12N5.5-3B	350	All Years	SS350	—	—	—	6N11A-1B
125	—	R1, R1S (Electric-start)	—	—	CB9-B	—	250	75-78	SS250, SX250	—	—	CB7L-B	12N7-3B
125	—	R1, R1S (Kick-start)	—	—	—	12N5.5-3B	175	74-78	SS175, SX175	—	—	CB7L-B	12N7-3B
125	—	RC Rally	—	—	CB10L-B	—	125	73-78	SX125, SXT125, TX125, SS125	—	—	CB7L-B	12N7-3B
125	—	RTX, RV, RX (Electric-start)	—	—	CB9-B	—	90	73-76	Z90	—	—	CB7L-B	12N7-3B
125	—	RTX, RV, RX (Kick-start)	—	—	—	12N5.5-3B	—	—	—	—	—	—	—
125	—	SP01, SP02 (Electric-start)	—	—	CB9-B	—	1800	09-17	GL1800 Gold Wing, F6B, F6C	CTX20HL-BS	CTX20L-BS	—	—
125	—	SP01, SP02 (Kick-start)	—	—	—	12N5.5-3B	1800	01-08	GL1800 Gold Wing	CTX20HL-BS	CTX20L-BS	—	—
125	—	Top Rally (Electric-start)	—	—	CB9-B	—	1800	02-11	VRTX1800C, F, N, R Retro, S	CTX20HL-BS	CTX20L-BS	—	—
125	—	Top Rally (Kick-start)	—	—	—	12N5.5-3B	1800	04-05	NRX1800 Valkyrie Rune	CTX20HL-BS	CTX20L-BS	—	—
125	—	Typhoon	—	—	CB7-A	—	1500	88-00	GL1500 Gold Wing	CTX24HL-BS	CTX18L-BS	C50-N18L-A3	—
125	—	XR1, XR2 (Electric-start)	—	—	CB9-B	—	1500	97-03	1500 All Valkyrie	CTX14H-BS	CTX14-BS	—	—
125	—	XR1, XR2 (Kick-start)	—	—	—	12N5.5-3B	1300	14	CTX1300, CTX1300D Deluxe	CTZ14S ^{FA}	—	—	—
50	97	Bullitt, Easy Moving, Runner	—	—	CB4L-B	—	1300	09-17	VT1300CS, CR, CT, CXA FURY	CTZ14S ^{FA}	CTZ14S-BS	—	—
50	95-97	Eaglet	—	—	CB4L-B	—	1300	03-14	ST1300, ST1300A, ST1300P	CTZ14S ^{FA}	CTZ14S-BS	—	—
50	—	GSA, Sioux (Electric-start)	—	—	CB4L-B	—	1300	03-12	VTX1300C, R, S, Retro	CTX14H-BS	CTX14-BS	—	—
50	—	Stalker, Storm, Top Rally	—	—	CB4L-B	—	1200	10-14	VFR1200F	CTZ14S ^{FA}	CTZ14S-BS	—	—
50	-97	Typhoon	—	—	CB4L-B	—	1200	13	VFR1200XD	CTZ14S ^{FA}	CTZ14S-BS	—	—
50	-97	Runner	—	—	CB4L-B	—	1200	84-87	GL1200 Gold Wing / GL1200L LTD	CTX24HL-BS	CTX18L-BS	C50-N18L-A-LM ¹⁵	C50-N18L-A3
1200	16-17	VFR1200X	—	—	—	—	1200	16-17	VFR1200X	CTZ14S ^{FA}	—	—	—
1100	10-14	CB1100	—	—	—	—	1100	10-14	CB1100	CTZ14S ^{FA}	CTZ14S-BS	—	—
1100	01-04	CBR1100XX	—	—	—	—	1100	01-04	CBR1100XX	CTZ12S ^{FA}	—	—	—
1100	97-00	CBR1100XX Super Sport	—	—	—	—	1100	97-00	CBR1100XX Super Sport	—	CTX12-BS	—	—
1100	83	CB1100F Super Sport / CF1100F	—	—	—	—	1100	83	CB1100F Super Sport / CF1100F	CTX14AHL-BS	—	CB14L-A2	—
1100	80-83	GL1100 Gold Wing	—	—	—	—	1100	80-83	GL1100 Gold Wing	CTX24HL-BS	CTX18L-BS	C50-N18L-A-LM ¹⁵	C50-N18L-A3
1100	91-02	ST1100, ABS-TCS, 1100A	—	—	—	—	1100	91-02	ST1100, ABS-TCS, 1100A	CTX14H-BS	CTX14-BS	—	—
1100	83-86	VF1100C V65 Magna	—	—	—	—	1100	83-86	VF1100C V65 Magna	CTX20H-BS	CTX20-BS	CB18-A	—
1100	84-85	VF1100S V65 Sabre	—	—	—	—	1100	84-85	VF1100S V65 Sabre	CTX20HL-BS	CTX20L-BS	CB18L-A	—
1100	00-07	VT1100C2 Shadow Sabre	—	—	—	—	1100	00-07	VT1100C2 Shadow Sabre	CTX14H-BS	CTX14-BS	—	—
1100	01-07	VT1100C, C3, T Shadow (Sport, Aero, A. C. E. Tourer)	—	—	—	—	1100	01-07	VT1100C, C3, T Shadow (Sport, Aero, A. C. E. Tourer)	CTX14H-BS	CTX14-BS	—	—
1100	98-00	VT1100C, C3, T Shadow (Sport, Aero, A. C. E. Tourer)	—	—	—	—	1100	98-00	VT1100C, C3, T Shadow (Sport, Aero, A. C. E. Tourer)	—	—	HCB16A-AB	—
1100	85-97	VT1100C Shadow Spirit	—	—	—	—	1100	85-97	VT1100C Shadow Spirit	—	—	HCB16A-AB	—
1100	95-99	Spirit / VT1100 / C2 Shadow A. C. E.	—	—	—	—	1100	95-99	Spirit / VT1100 / C2 Shadow A. C. E.	—	—	HCB16A-AB	—
1000	08-17	CBR1000RA (ABS)	—	—	—	—	1000	08-17	CBR1000RA (ABS)	CTZ10S ^{FA}	—	—	—
1000	09-16	CB1000R	—	—	—	—	1000	09-16	CB1000R	CTZ10S ^{FA}	CTZ10S-BS	—	—
1000	09-10	CBF1000F	—	—	—	—	1000	09-10	CBF1000F	CTZ10S ^{FA}	CTZ10S-BS	—	—
1000	94-95	CB1000	—	—	—	—	1000	94-95	CB1000	—	CTX12-BS	—	—
1000	83	CB1000C Custom	—	—	—	—	1000	83	CB1000C Custom	CTX14AHL-BS	—	CB14L-A2	—
1000	87-96	CBR1000F Hurricane	—	—	—	—	1000	87-96	CBR1000F Hurricane	CTX14AHL-BS	—	CB14L-B2	—
1000	08-17	CBR1000RR	—	—	—	—	1000	08-17	CBR1000RR	CTZ7S ^{FA}	CTZ7S-BS	CTX5L-BS	—
1000	04-07	CBR1000RR	—	—	—	—	1000	04-07	CBR1000RR	CTZ10S ^{FA}	CTZ10S-BS	—	—
1000	79-82	CBX1000 Super Sport	—	—	—	—	1000	79-82	CBX1000 Super Sport	CTX20HL-BS	CTX20L-BS	CB18L-A	—
1000	82	CBX1000 Super Sport (Opt.heavy-duty)	—	—	—	—	1000	82	CBX1000 Super Sport (Opt.heavy-duty)	CTX24HL-BS	CTX18L-BS	C50-N18L-A-LM ¹⁵	C50-N18L-A3
1000	75-79	GL1000 Gold Wing	—	—	—	—	1000	75-79	GL1000 Gold Wing	CTX24HL-BS	CTX18L-BS	C50-N18L-A-LM ¹⁵	C50-N18L-A3
1000	00-06	RVT1000R RC51	—	—	—	—	1000	00-06	RVT1000R RC51	CTZ12S ^{FA}	CTZ12S-BS	—	—
1000	84-86	VF1000R, VF1000R F Interceptor	—	—	—	—	1000	84-86	VF1000R, VF1000R F Interceptor	—	—	CB16B-A	—
1000	10-12	XL1000V Varadero	—	—	—	—	1000	10-12	XL1000V Varadero	CTX20CH-BS	—	—	—
1000	97-00	VTR1000F Super Hawk	—	—	—	—	1000	97-00	VTR1000F Super Hawk	—	CTX12-BS	—	—
1000	01-05	VTR1000F Super Hawk	—	—	—	—	1000	01-05	VTR1000F Super Hawk	CTZ12S ^{FA}	CTZ12S-BS	—	—
1000	16-17	RC213V-S	—	—	—	—	1000	16-17	RC213V-S	CTZ7S ^{FA}	CTZ7S-BS	CTX5L-BS	—
954	02-03	CBR954RR	—	—	—	—	954	02-03	CBR954RR	CTZ10S ^{FA}	CTZ10S-BS	—	—
929	00-01	CBR929RR, CBR929RE	—	—	—	—	929	00-01	CBR929RR, CBR929RE	CTZ10S ^{FA}	CTZ10S-BS	—	—
919	02-06	CB900F (919)	—	—	—	—	919	02-06	CB900F (919)	CTZ10S ^{FA}	CTZ10S-BS	—	—
900	80-82	CB900C, CB900F	—	—	—	—	900	80-82	CB900C, CB900F	CTX14AHL-BS	—	CB14L-A2	—
900	93-99	CBR900R, CBR900RR	—	—	—	—	900	93-99	CBR900R, CBR900RR	—	CTX9-B	—	—
800	89-98	PC800 Pacific Coast	—	—	—	—	800	89-98	PC800 Pacific Coast	—	CTX12-BS	—	—
800	98-01	VFR800F Interceptor	—	—	—	—	800	98-01	VFR800F Interceptor	—	CTX12-BS	—	—
800	14-16	VFR800 Interceptor, VFR800D Interceptor DLX	—	—	—	—	800	14-16	VFR800 Interceptor, VFR800D Interceptor DLX	CTZ12S ^{FA}	CTZ12S-BS	—	—
800	02-12	VFR800, VFR800A Interceptor (ABS)	—	—	—	—	800	02-12	VFR800, VFR800A Interceptor (ABS)	CTZ12S ^{FA}	CTZ12S-BS	—	—
800	88	VT800C Shadow	—	—	—	—	800	88	VT800C Shadow	CTX14AHL-BS	—	CB14-B2	—
750	10-15	VT750C, C2, RS, C2B, CA Shadow	—	—	—	—	750	10-15	VT750C, C2, RS, C2B, CA Shadow	CTZ14S ^{FA}	CTZ14S-BS	—	—
750	91-03	CB750 Nighthawk	—	—	—	—	750	91-03	CB750 Nighthawk	CTX14AHL-BS	—	CB14-A2	—
750	76-78	CB750A Hondamatic	—	—	—	—	750	76-78	CB750A Hondamatic	CTX24HL-BS	CTX18L-BS	C50-N18L-A3	—
750	80-84	CB750C Custom, CB750C Nighthawk	—	—	—	—	750	80-84	CB750C Custom, CB750C Nighthawk	CTX14AHL-BS	—	CB14L-A2	—
750	69-82	CB750F, CB750K, CB750C, CB750S	—	—	—	—	750	69-82	CB750F, CB750K, CB750C, CB750S	CTX14AHL-BS	—	CB14L-A2	12N14-3A
750	82-83	VF750C V45 Magna	—	—	—	—	750	82-83	VF750C V45 Magna	CTX14AHL-BS	—	CB14-A2	—
750	88	VF750C V45 Magna	—	—	—	—	750	88	VF750C V45 Magna	—	—	CB12A-A	—
750	83-84	VF750F V45 Interceptor	—	—	—	—	750	83-84	VF750F V45 Interceptor	CTX14AHL-BS	—	CB14-A2	—
750	82-83	VF750S V45 Sabre	—	—	—	—	750	82-83	VF750S V45 Sabre	CTX14AHL-BS	—	SCB14L-A2	—
750	94-03	VF750C, C2, D, Magna, Deluxe	—	—	—	—	750	94-03	VF750C, C2, D, Magna, Deluxe	—	CTX12-BS	—	—
750	86	VFR750F Interceptor	—	—	—	—	750	86	VFR750F Interceptor	—	—	CB12A-B	—
750	90-97	VFR750F	—	—	—	—	750	90-97	VFR750F	—	CTX12-BS	—	—

¹⁵ LM (=YUASA "CX" BATTERY) Low Maintenance.

¹⁸ Must Be Factory Activated / Factory Sealed Battery.

(Continued)

MOTORCYCLE/SCOOTER BATTERY APPLICATIONS



CC	Year	Model	High Performance Maintenance-Free / VRLA	Maintenance-Free AGM	High Performance (CB) Conventional	Conventional Flooded	CC	Year	Model	High Performance Maintenance-Free / VRLA	Maintenance-Free AGM	High Performance (CB) Conventional	Conventional Flooded
250	82-83	CM250											

MOTORCYCLE/SCOOTER BATTERY APPLICATIONS



CC	Year	Model	High Performance Maintenance-Free /VRLA	Maintenance-Free AGM	High Performance (CB) Conventional	Conventional Flooded	CC	Year	Model	High Performance Maintenance-Free /VRLA	Maintenance-Free AGM	High Performance (CB) Conventional	Conventional Flooded
65	65-69	S65 Sport (CS65)	—	—	6N2-2A UNV	6N2-2A	1720	12-13	Chief Classic, Vintage, Dark Horse	CTX24HL-BS	—	—	—
55	62-65	C105T, CA105T Trail	—	—	6N2-2A UNV	6N2-2A	1720	09-11	Chief (all models)	CTX20H-BS	—	—	—
50	59-69	C100, C100T, CA100, C110, CA110	—	—	6N2-2A UNV	6N2-2A	1638	02-03	Chief	CTX24HL-BS	CTX18L-BS	C50-N18L-A3	—
50	82	MB5	—	—	CB2.5L-C	—	1442	02-03	Scout, Spirit	CTX20H-BS	CTX20-BS	—	—
50	79	NA50 Express II	—	—	6N2-2A UNV	6N2-2A	1442	99-01	All Models	CTX20H-BS	CTX20-BS	—	—
50	80-81	NA50 Express II	—	—	6N4-2A UNV	6N4-2A-6	1133	15-17	Scout	CTX14AH-BS	—	—	—
50	77	NC50 Express	—	—	6N2A-2C UNV	6N2A-2C-3	999	16-17	Scout Sixty	CTX14AH-BS	—	—	—
50	78-79	NC50 Express	—	—	6N2-2A UNV	6N2-2A	—	—	—	—	—	—	—
50	80-83	NC50 Express	—	—	6N4-2A UNV	6N4-2A-6	2000	04-12	VN2000-A Vulcan	CTX20CH-BS	CTX16-BS	—	—
50	90	NS50F	—	—	CB3L-A	—	1700	09-17	VN1700 Voyager, Nomad, Vaquero	CTX20CH-BS	CTX16-BS	—	—
50	82-83	NU50 Urban Express	—	—	CB2.5L-C-1	—	1600	03-09	VN1600-A Vulcan Classic, D, Nomad	CTX20CH-BS	CTX16-BS	—	—
50	82-83	NU50M Urban Express Deluxe	—	—	CB4L-B	—	1600	04-09	VN1600-B Vulcan Mean Streak	CTX20CH-BS	CTX16-BS	—	—
50	81-82	NX50M Express SR	—	—	CB4L-B	—	1500	96-09	VN1500-D, E, N Vulcan Classic	CTX20CH-BS	CTX16-BS	—	—
50	69-70	Z50A (K1)	—	—	6N2A-2C UNV	6N2A-2C-1	1500	96-97	1500L, VN1500C Vulcan L	CTX24HL-BS	CTX18L-BS	C50-N18L-A3	—
50	88	ZB50	—	—	CTX4L-BS	—	1500	87-98	VN1500A Vulcan, VN1500 88 SE, C, L	CTX24HL-BS	CTX18L-BS	C50-N18L-A3	—
HONDA SCOOTERS													
600	02-15	FSC600 Silver Wing	CTZ12S ^{FA}	CTZ12S-BS	—	—	1500	99-05	Drifter	CTX20CH-BS	CTX16-BS	—	—
300	14-16	NSS300 Forza	CTZ12S ^{FA}	—	—	—	1500	02-03	VN1500 P Vulcan Mean Streak	CTX20CH-BS	CTX16-BS	—	—
250	85-90	CH250 Elite	—	CTX12-BS	—	—	1400	06-17	ZX14 Ninja, ZX-14, R, ABS	CTX14H-BS	CTX14-BS	—	—
250	93-09	CN250 Helix	—	CTX12-BS	—	—	1400	08-17	ZG1400 Concours, ABS	CTX14H-BS	CTX14-BS	—	—
250	86-87	CN250 Helix	—	CTX12-BS	—	—	1300	79-82	KZ1300A, KZ1300B Touring	CTX24HL-BS	CTX18L-BS	C50-N18L-A3	—
250	01-09	NSS250 Reflex	CTZ12S ^{FA}	CTZ12S-BS	—	—	1300	83-88	ZN1300A Voyager	—	—	—	12N24-3
250	05-08	PS250 Big Ruckus	CTZ12S ^{FA}	CTZ12S-BS	—	—	1200	09-13	ZRX1200 DAEG	—	CTX12-BS	—	—
150	13	PCX150	CTZ7S ^{FA}	—	—	—	1200	86-03	ZG1200 Voyager XII	CTX24HL-BS	CTX18L-BS	SC50-N18L-AT ¹⁴	—
150	10-12	SH150	—	CTX7L-BS	—	—	1200	01-05	ZRX1200R, ZRX1200S	CTX14H-BS	CTX14-BS	—	—
150	87	CH150 Elite	—	CTX9-BS	—	—	1200	00-05	Ninja ZX-12R / ZZR1200	CTX14H-BS	CTX14-BS	—	—
150	85-86	CH150 Elite Deluxe	—	—	CB9-B	—	1100	81-83	KZ1100A, KZ1100 LTD	CTX20HL-BS ²⁰	CB18L-A	—	—
150	13	SH150	CTZ7S ^{FA}	CTZ7S-BS	—	—	1100	82	KZ1100B GP	—	CTX19L-BS	SCB16L-B	—
150	03	FES150	—	CTX9-BS	—	—	1100	81	KZ1100B GP	—	CTX19L-BS	CB16L-B	—
150	15-17	PCX150	CTZ8V ^{FA,22}	CTX7L-BS	—	—	1100	84-85	ZN1100B LTD	CTX14AHL-BS	—	CB14L-A2	—
125	10-13	PCX125	CTZ7S ^{FA}	CTZ7S-BS	—	—	1100	92-95	ZR1100	CTX20CH-BS	CTX16-BS	—	—
125	84	CH125 Elite	—	—	CB9-B	—	1100	99-00	ZRX1100	CTX14H-BS	CTX14-BS	—	—
125	—	FES125 / Pantheon 125	—	CTX9-BS	—	—	1100	83-84	ZX1100A GPz	CTX19L-BS	—	SCB16L-B	—
125	84	NH125 Aero	—	—	CB5L-B	—	1100	90-93	ZX1100-C Ninja ZX-11	CTX14AHL-BS	—	CB14L-A2	—
125	10-12	SH125	—	CTX7L-BS	—	—	1100	95-01	ZX1100-D Ninja ZX-11	CTX14H-BS	CTX14-BS	—	—
125	13	SH125	CTZ7S ^{FA}	—	—	—	1100	93-94	ZX1100-D Ninja ZX-11 (Canada)	CTX14H-BS	CTX14-BS	—	—
110	10-13	NHX110 Elite	—	CTX7L-BS	—	—	1100	95-97	ZX1100-E (GPz1100) ABS	CTX14H-BS	CTX14-BS	—	—
80	93-09	CH80 Elite	CTZ7S ^{FA}	CTX5L-BS	CT5L-BS	—	1000	14-16	Z1000, ABS	—	CTX12A-BS	—	—
80	85	NH80 Aero	CTZ7S ^{FA}	CTX5L-BS	CT5L-BS	—	1000	14-17	Ninja 1000, ABS	—	CTX12A-BS	—	—
80	83-84	NH80MD Aero	—	—	CB5L-B	—	1000	11-14	ZX10R	CTZ7S ^{FA}	CTZ7S-BS	CTX5L-BS	—
50	13-17	NCH50 Metropolitan	CTZ5S ^{FA}	CTX4L-BS	—	—	1000	02-05	KZ1000-P Police	CTX20HL-BS	CTX20L-BS ²⁰	—	—
50	02-13	CHF50 Metropolitan, CHF50 II, CHF50 SP	CTZ7S ^{FA}	CTX5L-BS	CTX5L-BS	—	1000	82-81	KZ1000-P Police	CTX20HL-BS ²⁰	CB18L-A	—	—
50	85-87	NB50 Aero	—	—	—	—	1000	80-81	KZ1000-C Police	—	CTX19L-BS	CB16L-B	—
50	83-84	NB50M Aero, NN50MD Gyro	—	—	CB4L-B	—	1000	78-79	KZ1000-C Police, KZ1000 Z1-R	CTX14AHL-BS	—	CB14L-A2	—
50	03-17	NPS50, S Ruckus	CTZ7S ^{FA}	CTX5L-BS	—	—	1000	77-80	KZ1000, LTD	CTX14AHL-BS	—	CB14L-A2	—
50	84-85	NQ50 Spree	—	—	CB4L-B	—	1000	79-80	KZ1000-E ST (Shaft)	—	CTX19L-BS	CB16L-B	—
50	86-87	NQ50 Spree, 50D SS	—	—	—	—	1000	80	KZ1000-G Classic	CTX14AHL-BS	—	CB14L-A2	—
50	78-83	PA50I Moped, PA50II	—	—	6N4B-2A UNV	6N4B-2A-5	1000	81-83	KZ1000-J, KZ1000-K LTD, KZ1000-M CSR	CTX20HL-BS ²⁰	CB18L-A	—	—
50	88-01	SA50 Elite LX, S, SR	—	—	—	—	1000	82-83	KZ1000-R Replica	CTX20HL-BS ²⁰	CB18L-A	—	—
50	67-68	P50 Little Honda	—	—	6N4-2A UNV	6N4-2A-4	1000	86-06	ZG1000-A Concours	CTX20HL-BS ²⁰	CB18L-A	—	—
50	88-90	SB50 (ALL)	—	—	—	—	1000	03-13	Z1000, ABS	—	—	—	—
50	87	SE50 Elite (ALL)	—	—	—	—	1000	86-90	ZL1000-A, ZX10R	CTX14AHL-BS	—	CB14L-A2	—
50	85-86	TG50 Gyro S (ALL)	—	—	—	—	1000	11-17	ZX10R, ABS	CTZ10S ^{FA}	CTZ10S-BS	—	—
—	13	All (Electric-start) Models	CTZ7S ^{FA}	CTX5L-BS	CT5L-BS	—	1000	96-02	ZX1000-A Concours (Canada)	CTX20HL-BS ²⁰	CTX20L-BS ²⁰	CB18L-A	—
—	97-03	All (Electric-start) Models	—	—	—	—	1000	04-10	ZX1000-B Ninja	CTX14AHL-BS	—	CB14L-A2	—
—	04-12	All (Electric-start) Models	CTZ7S ^{FA}	CTX5L-BS	CT5L-BS	—	1000	11-13	Ninja 1000, ABS	CT12B-4 ^{FA}	CT12B-BS	—	—
HUSQVARNA													
900	13	NUDA900	CTX14H-BS	CTX14-BS	—	—	1000	15-17	Versys 1000, LT	—	—	—	—
580	00-01	TE610E, SM610S	CTX14H-BS	CTX14-BS	—	—	900	76-77	KZ900-A, KZ900-B LTD	—	—	CB10L-A2	—
511	-11	TE, TXC	CTZ7S ^{FA}	CTX7S-BS	—	—	900	06-16	Vulcan 900 Classic, Custom, Classic LT	—	—	—	—
510	-10	TC, TXC, TE, SMR	CTZ7S ^{FA}	CTX7S-BS	—	—	900	72-76	Z900 (Z1 Series)	CTX14AHL-BS	—	CB14L-A2	12N14-3A
450	-10	TC, TXC, TE, SMR	CTZ7S ^{FA}	CTX7S-BS	CTX5L-BS	—	900	85-86	ZL900-A Eliminator	CTX14AHL-BS	—	CB14L-A2	—
449	-11	TE	CTZ7S ^{FA}	—	—	—	900	84-03	Ninja GPZ900R ZX900A1-A16	CTX14AHL-BS	—	CB14L-A2	—
400	00-01	TE410E	CTX14H-BS	CTX14-BS	—	—	900	94-97	ZX900-B Ninja (ZX-9R)	—	CTX12-BS	—	—
310	-10	TC, TXC, TE, SMR	CTZ7S ^{FA}	CTX7S-BS	—	—	900	98-99	ZX900-C Ninja (ZX-9R)	—	CTX9-BS	—	—
250	-11	TE, TXC	CTZ7S ^{FA}	CTX7S-BS	—	—	900	00-03	ZX900-E, ZX900-F Ninja (ZX-9R)	—	CTX9-BS	—	—
HYOSUNG MOTORS													
700	10-13	S17	CT14B-4 ^{FA}	CT14B-BS	—	—	800	95-03	VN800-A, B, C, E Vulcan, Classic, Drifter	CTX14H-BS	CTX14-BS	—	—
650	09-13	GT650, GT650R, GT650S	CTX14H-BS	CTX14-BS	—	—	800	13-16	Z800, ABS	—	—	—	—
650	09-13	GV650, GV650SE	CT14B-4 ^{FA}	CT14B-BS	—	—	750	09-11	Z750 (EU)	—	—	—	—
250	09-13	GT250, GT250R	CTX14H-BS	CTX14-BS	—	—	750	72-75	H2 Series	—	—	—	12N5.5-4A
250	09-13	GV250	—	CTX9-BS	—	—	750	76-79	KZ750, KZ750 LTD, KZ750 CSR	CTX14AHL-BS	—	SCB14L-A2	—
—	—	—	—	—	—	—	750	80-83	KZ750-E, H, L, LTD	—	—	CB12A-A	—
—	—	—	—	—	—	—	750	83	KZ750-F LTD, Spectre, CSR	CTX14AHL-BS	—	CB14L-A2	—
—	—	—	—	—	—	—	750	80-84	KZ750-G LTD, KZ750K	CTX14AHL-BS	—	CB14L-A2	—
—	—	—	—	—	—	—	750	82	KZ750-R GP	—	—	SCB12A-A	—
—	—	—	—	—	—	—	750	93	KZ750-L Ninja	—	—	—	—
—	—	—	—	—	—	—	750	86-06	VN750-A Vulcan	CTX14AHL-BS	—	CB14L-A2	—
—	—	—	—	—	—	—	750	84-85	ZN750-A LTD	CTX14AHL-BS	—	CB14L-A2	—
—	—	—	—	—	—	—	750	00-05	ZR7, ZR7S	—	—	—	—

FA= Factory Activated And Factory Sealed Battery.
 22 CTZ8V Increased Capacity/CCA Compared To CTX7L (FA).

14 AT=WIRE LEAD.
 20 Some Holddown Modification May Be Required.

(Continued)

MOTORCYCLE/SCOOTER BATTERY APPLICATIONS



CC	Year	Model	High Performance Maintenance-Free /VRLA	Maintenance-Free AGM	High Performance (CB) Conventional	Conventional Flooded	CC	Year	Model	High Performance Maintenance-Free /VRLA	Maintenance-Free AGM	High Performance (CB) Conventional	Conventional Flooded
750	83-85	ZX750-A GPz	—	—	CB14L-A2	—	250	76	KH250-A	—	—	—	12N5.5-4A
750	91-94	ZR750-C Zephyr	—	—	CB14L-A2	—	250	78-84	KL250-A, KL250-C	—	—	—	6N6-1D-2
750	05-06	ZR750 (Z750S)	—	—	CB14L-A2	—	250						

MOTORCYCLE/SCOOTER BATTERY APPLICATIONS



CC	Year	Model	High Performance Maintenance-Free / VRLA	Maintenance-Free AGM	High Performance (CB) Conventional	Conventional Flooded	CC	Year	Model	High Performance Maintenance-Free / VRLA	Maintenance-Free AGM	High Performance (CB) Conventional	Conventional Flooded
250	05-10	EXC, Racing, EXF	CTZ7S ^{FA}	CTX5L-BS	CT5L-BS	—	500	—	All 500 Models	—	—	—	12N16-3B
250	13-16	SX-F, EXC, EXC-F	CTZ5S ^{FA}	CTX4L-BS	—	—	125	—	CJ 125 Rider, LB, GS, Lesmo	—	—	—	12N5.5-3B
200	13	Duke	—	CTX9-BS	—	—	125	—	LZ (Zyndapp Engine)	—	—	—	6N11A-1B
125	13	Duke	—	CTX7L-BS	—	—	MALAGUTI						—
KYMCO							400	01	Madison	—	—	—	CB9-B
700	14	MyRoad 700i	—	CTX14-BS	—	—	250	01	Madison	—	—	—	CB9-B
500	09-14	Xciting 500Ri ABS	—	CTX14-BS	—	—	150	01	Madison	—	—	—	CB9-B
500	09-16	Xciting 500i	CTX14H-BS	—	—	—	125	01	Madison	—	—	—	CB9-B
400	09	Xciting 400i	—	CTX12-BS	—	—	125	87	Runner	—	—	—	12N5.5-4B
300	12-14	People GT 300i	—	CTX12A-BS	—	—	125	86	Runner Rally	—	—	—	CB3L-A
300	—	MXU300SD	—	CTX12-BS	—	—	100	01	Ciak	—	—	—	CB5L-B
300	-13	Downtown 300	—	CTX12A-BS	—	—	100	—	F12 Phantom	CTZ7S ^{FA}	CTX5L-BS	CT5L-BS	—
300	-16	People GT	—	CTX12A-BS	—	—	90	—	RST	—	—	—	CB4L-B
250	09-10	Venox250	—	CTX9-BS	—	—	50	94	Centro, SL, 50F, 10, 12, 15	—	—	—	CB4L-B
250	09-11	People 250	—	CTX12-BS	—	—	50	96	CR1	—	—	—	CB4L-B
250	00	Super 9	—	CTX12-BS	—	—	50	89	Dune ES	—	—	—	CB4L-B
250	10-11	Xciting 250i	—	CTX12-BS	—	—	50	—	Evolution, F-10, F-12, F-15, Fifty Top	—	—	—	CB4L-B
200	-11	People S 200	—	CTX7A-BS	—	—	50	—	Grosser EL, CR1, Mistral	—	—	—	CB4L-B
200	-13	People GT	—	CTX12A-BS	—	—	50	—	New Dribbling (Electric-start)	—	—	—	CB4L-B
150	09-14	Super 8 150	—	CTX7A-BS	—	—	MALACA						
150	99	Zing	—	CTX7L-BS	—	—	125	—	2CE, 150 GT	—	—	—	6N11A-1B
150	99	Spacer	—	CTX9-BS	—	—	125	—	OB One, Mark 125	—	—	—	12N5.5-4B
150	96	Heroism	—	CTX9-BS	—	—	MBK						
150	96	Fox Hunt	—	CTX7L-BS	—	—	250	01	Skyliner	—	—	CB7L-B2	12N7-3B
150	97	Dink LX	—	CTX9-BS	—	—	250	99-00	Skyliner	CTZ7S ^{FA}	CTZ7S-BS	CTX5L-BS	—
150	09-16	People S 150 / Super 8 150	—	CTX7A-BS	—	—	150	99-00	Skyliner	—	—	CB7L-B2	—
125	06-14	Agility 125	—	CTX5L-BS	—	—	150	99-00	Vertex	—	—	CTX7A-BS	—
125	-16	Agility 125	CTZ7S ^{FA} / CTZ6L-BS	CTX5L-BS	CT5L-BS	—	125	01	Doodo	—	—	CB7L-B	12N7-3B
125	99	Zing	—	CTX7L-BS	—	—	125	99-00	Doodo	—	—	CB7L-B2	—
125	99	Spacer / Movie125	—	CTX9-BS	—	—	125	01	Flame	—	—	CB7C-A	—
125	00	People125	—	CTX7L-BS	—	—	125	95-97	Flame, Flame R	—	—	CTX7A-BS	—
125	99	Jockey125	—	CTX7L-BS	—	—	125	01	Skyliner, Thunder	—	—	CB7L-B	12N7-3B
125	95-96	Heroism	—	CTX9-BS	—	—	100	01	Booster	—	—	CB4L-B	—
125	96	Fox Hunt	—	CTX7L-BS	—	—	100	99-00	Booster	CTZ7S ^{FA}	CTX5L-BS	CT5L-BS	—
125	97	Dink LX	—	CTX9-BS	—	—	100	01	Nitro	—	—	CB4L-B	—
125	99	Calypso125 / B&W125	—	CTX9-BS	—	—	100	99-00	Nitro	CTZ7S ^{FA}	CTX5L-BS	CT5L-BS	—
125	09-10	Pepole S 125	—	CTX7A-BS	—	—	100	01	Ovetto	—	—	CB4L-B	—
90	—	Mongoose 90	CTZ7S ^{FA} / CTZ6L-BS	CTX5L-BS	CT5L-BS	—	100	99-00	Ovetto	CTZ7S ^{FA}	CTX5L-BS	CT5L-BS	—
80	99	Filly80	CTZ7S ^{FA} / CTZ6L-BS	CTX5L-BS	CT5L-BS	—	80	95-98	Evolis	—	—	CB4L-B	—
80	99	AS100	CTZ7S ^{FA} / CTZ6L-BS	CTX5L-BS	CT5L-BS	—	50	—	Active	—	—	CB4L-B	—
80	97	KB	CTZ7S ^{FA} / CTZ6L-BS	CTX5L-BS	CT5L-BS	—	50	93-97	Booster	—	—	CB4L-B	—
80	97	Top Boy	—	CTX7A-BS	—	—	50	—	Equals	—	—	CB4L-B	—
50	09-16	Agility 50	—	CTX7A-BS	—	—	50	98	Evolis	—	—	CB4L-B	—
50	11-14	Super 8 50 2T	—	CTX7A-BS	—	—	50	—	Fizz	—	—	CB4L-B	—
50	99	Calypso50, Corba, Cross	CTZ7S ^{FA} / CTZ6L-BS	CTX5L-BS	CT5L-BS	—	50	01	Flipper	—	—	CB4L-B	—
50	—	Curio CX	—	CTX4L-BS	—	—	50	—	Forte	—	—	CB4L-B	—
50	95-97	CX (All Models)	—	CTX4L-BS	—	—	50	01	Nitro	—	—	CB4L-B	—
50	00	CX / CX Super	—	CTX4L-BS	—	—	50	01	Ovetto	—	—	CB4L-B	—
50	99	Dink50 / LC	CTZ7S ^{FA} / CTZ6L-BS	CTX5L-BS	CT5L-BS	—	50	—	Sorriso	—	—	CB4L-B	—
50	98-	DJ50, DJW50, DJX50	—	CTX4L-BS	—	—	50	01-02	Stunt	—	—	CB4L-B	—
50	97	DJ50, DJW50, DJX50	—	CTX4L-BS	—	—	50	—	Target	—	—	CB4L-B	—
50	—	DJY50	—	CTX4L-BS	—	—	50	—	X-Limit, DT 50	—	—	CB3L-A	—
50	00	Fever ZX	CTZ7S ^{FA} / CTZ6L-BS	CTX5L-BS	CT5L-BS	—	MORINI						
50	—	Filly50	CTZ7S ^{FA} / CTZ6L-BS	CTX5L-BS	CT5L-BS	—	500	—	Camel, Excalibur, Kangura, New York	CTX20HL-BS	CTX20L-BS	CB18L-A	—
50	95-97	Heroism	—	CTX4L-BS	—	—	500	—	R, Turbo	CTX20HL-BS	CTX20L-BS	CB18L-A	—
50	96-97	K12	—	CTX4L-BS	—	—	350	—	Dart	CTX14AHL-BS	—	CB14L-A2	—
50	97	KB	—	CTX4L-BS	—	—	350	—	Excalibur, Kangaroo, New York, Sport	CTX20HL-BS	CTX20L-BS	CB18L-A	—
50	—	Looping	CTZ7S ^{FA} / CTZ6L-BS	CTX5L-BS	CT5L-BS	—	350	—	TS	—	—	CB9L-B	12N9-3B
50	—	Mongoose 50	CTZ7S ^{FA} / CTZ6L-BS	CTX5L-BS	CT5L-BS	—	175	—	Sport, Turismo	—	—	—	B49-6
50	00	People	CTZ7S ^{FA} / CTZ6L-BS	CTX5L-BS	CT5L-BS	—	150	—	SS	—	—	—	6N11A-1B
50	09-10	People S 50	—	CTX7A-BS	—	—	125	—	Corsaro, Country	—	—	—	6N11A-1B
50	99	Racer, Looping, People / Spacer	CTZ7S ^{FA} / CTZ6L-BS	CTX5L-BS	CT5L-BS	—	MOTO MORINI						
50	97	Scout	—	CTX4L-BS	—	—	501	—	Camel (Electric-start), Coguard	CTX20HL-BS	CTX20L-BS	CB18L-A	—
50	—	Super 8, 9	CTZ7S ^{FA} / CTZ6L-BS	CTX5L-BS	CT5L-BS	—	501	—	Coguard, Excalibur, Kanguro, New York	CTX20HL-BS	CTX20L-BS	CB18L-A	—
50	97	Top Boy	CTZ7S ^{FA} / CTZ6L-BS	CTX5L-BS	CT5L-BS	—	500	—	Camel, Enduro	—	—	6N2-2A UNV	6N2-2A
50	—	YN50	—	CTX4L-BS	—	—	500	—	500R, 500S, Turbo, Coguard	CTX20HL-BS	CTX20L-BS	CB18L-A	—
50	—	ZX Big Wheel	—	CTX4L-BS	—	—	500	—	Excalibur, Excalibur S	CTX20HL-BS	CTX20L-BS	CB18L-A	—
50	09-16	Super 8	—	CTX7A-BS	—	—	350	—	Coguard, Excalibur	CTX20HL-BS	CTX20L-BS	CB18L-A	—
50	09-10	Super 9	CTZ7S ^{FA} / CTZ6L-BS	CTX5L-BS	CT5L-BS	—	350	—	Dart, New York, Sport, TS	CTX14AHL-BS	—	CB14L-A2	—
50	09-13	People	CTZ7S ^{FA} / CTZ6L-BS	CTX5L-BS	CT5L-BS	—	350	—	Excalibur, Kanguro, Sport (Electric-start)	CTX20HL-BS	CTX20L-BS	CB18L-A	—
50	00-	Sniper / Sniper DD	—	CTX4L-BS	—	—	350	—	Sport (Kick-start)	—	—	CB9-B	—
50	—	Vitality	CTZ7S ^{FA} / CTZ6L-BS	CTX5L-BS	CT5L-BS	—	175	—	Turismo, Sport	—	—	B49-6	—
50	95-97	ZX Fever	—	CTX4L-BS	—	—	150	—	SS	—	—	—	6N11A-1B
1200	—	All 1200 Models	—	—	—	—	125	—	Country, Coraro	—	—	—	6N11A-1B
1000	—	All 1000 Models	—	—	—	—	MOTO GUZZI						
1000	—	1000RGS	CTX30L (FA)	CTX30L-BS	53030	C60-N30L-B	1400	-16	AUDACE	CTX20CH-BS	—	—	—
750	—	All 750 Models	CTX20HL-BS	CTX20L-BS	CB18L-A	—	1400	13-14	California 1400 Custom, Touring	—	CTX20-BS	—	—
668	—	All 668 Models	CTX20HL-BS	CTX20L-BS	CB18L-A	—	1380	-16	Eldorado	CTX20CH-BS	—	—	—
650	—	All 650 Models	CTX20HL-BS	CTX20L-BS	CB18L-A	—	1380	13	California	CTX20H-BS	CTX20-BS	—	—
600	—	OR 600 Atlas	CTX14AHL-BS	—	CB14L-A2	—	1200	13-16	GRISO V8	—	—	—	—
—	—	—	—	—	—	—	1200	09-16	Stelvio	CTX20CH-BS	—	—	—

FA= Factory Activated And Factory Sealed Battery.

(Continued)

MOTORCYCLE/SCOOTER BATTERY APPLICATIONS



CC	Year	Model	High Performance Maintenance-Free / VRLA	Maintenance-Free AGM	High Performance (CB) Conventional	Conventional Flooded	CC	Year	Model	High Performance Maintenance-Free / VRLA	Maintenance-Free AGM	High Performance (CB) Conventional	Conventional Flooded
1200	09-13	1200 Sport	CTX20CH-BS	—	—	—	125	—	TX 125	—	—	—	6N11A-1B
1200	09-16	Norge	CTX20CH-BS	—	—	—	125	—	All 6-Volt Models	—	—	—	6N11A-3
1200	09-10	Sport, ABS	CTX20CH-BS	—	—	—	MV AGUSTA						
1200	09-10	Breva 1200	CTX20CH-BS	—	—	—	1000	05-16	F4	CTZ10S ^{FA}	CTZ10S-BS	—	—
1100	03-05	1100 California (Calif. only)	—	CTX15L-BS	—	—	1000	09-16	Brutale 1078RR, 1090	CTZ10S ^{FA}	CTZ10S-BS	—	—
1100	05-13	California, Special, Jackal, Breva, Griso	CTX20CH-BS	—	—	—	910	06-09	Brutale	CTZ10S ^{FA}	CTZ10S-BS	—	—
1100	94-05	Stone, EV	CTX30L (FA)	CTX30L-BS	53030	C60-N30L-B	800	-16	Brutale	CTZ10S ^{FA}	CTZ10S-BS	—	—
1100	99-02	Quota 1100 ES (Must Be Factory Activated / Factory Sealed Battery)	CTX15L (FA) ¹⁸	—	—	—	750	—	Avivamento (Electric-start)	CTX30L (FA)	CTX30L-BS	53030	C60-N30L-B
1100	97-99	Sport 1100i	—	CTX15L-BS	—	—							

MOTORCYCLE/SCOOTER BATTERY APPLICATIONS



CC	Year	Model	High Performance Maintenance-Free /VRLA	Maintenance-Free AGM	High Performance (CB) Conventional	Conventional Flooded	CC	Year	Model	High Performance Maintenance-Free /VRLA	Maintenance-Free AGM	High Performance (CB) Conventional	Conventional Flooded	
150	—	Vespa PX X	—	—	CB7-A	—	1507	00-01	V92SC Sport Cruiser	—	—	CTX20L-BS	—	
125	99-00	Hexagon LX4	—	—	CTX12-BS	—	1507	02-06	V92TC Touring Cruiser	—	—	CTX20L-BS	—	
125	—	Skipper 125	—	—	CB4L-B	—	1507	03-05	Vegas, Kingpin, 8-ball, Hammer	—	—	CTX20L-BS	—	
125	94-97	SKR	—	—	CB7-A	—	1500	98-99	Victory	—	—	CTX20L-BS	—	
125	99-00	Superhexagon GTX	—	—	CTX12-BS	—	PUCH						—	—
125	96-97	TPH	—	—	CB7-A	—	—	—	Cobra 80, Cobra GTL	—	—	B39-6	—	
125	97	Vespa ET4	—	—	CB9-B	—	—	—	Cobra GTL, Daytona N50, Monza	—	—	B39-6	—	
125	—	Vespa ET5	—	—	CB7-A	—	—	—	Lido SL50, Lido Vario	—	—	CB4L-B	—	
125	—	Vespa PK-S, Vespa-FL, Vespa-XL	—	—	CB7-A	12N7-4A	—	—	Monza GP, Monza GX, Monza X	—	—	B39-6	—	
125	—	Vespa PX E	—	—	CB9-B	—	ROYAL ENFIELD						—	—
125	—	Vespa PX S	—	—	CB7-A	—	500	95-99	All Kick-start Models	—	—	CB7-A	12N7-4A	
125	—	Vespa T5	—	—	CB7-A	—	500	00-03	All Kick-start Models	—	—	CB5L-B	12N5-3B	
80	—	P80X	—	—	—	12N5.5-3B	500	00-03	All Electric Start Models	CTX14AHL-BS	—	CB14L-A2	—	
80	—	KP80	—	—	—	12N5.5-3B	350	95-99	All Kick-start Models	—	—	CB7-A	12N7-4A	
80	—	PX80E	—	—	CB7-A	12N7-4A	350	00-03	All Kick-start Models	—	—	CB5L-B	12N5-3B	
80	—	PX80E Lusso	—	—	CB7-A	12N7-4A	350	00-03	All Electric Start Models	CTX14AHL-BS	—	CB14L-A2	—	
80	—	Sfera 80	—	—	CB4L-B	—	SUZUKI MOTORCYCLES						—	—
80	—	TPH	—	—	CB7-A	12N7-4A	1800	14	M109R Boulevard B.O.S.S.	CTX20CH-BS	CTX16-BS	—	—	
50	97	ET-2	—	—	CB4L-B	—	1800	06-17	VZR1800 (M109R)	CTX20CH-BS	CTX16-BS	—	—	
50	—	Storm	—	—	CB7-A	12N7-4A	1800	08-12	VLR1800 (C109R)	CTX20CH-BS	CTX16-BS	—	—	
50	—	Vespa ET2	—	—	CB7-A	12N7-4A	1600	04-05	Marauder, Boulevard M95	CTX20CH-BS	CTX16-BS	—	—	
50	—	Vespa PK-HP	—	—	CB7-A	12N7-4A	1500	14-17	VL1500 Boulevard C90	CTX20CH-BS	CTX16-BS	—	—	
50	—	Vespa PK N, Vespa PK S	—	—	CB7-A	12N7-4A	1500	09-17	VZ1500 Boulevard M90	CTX20CH-BS	CTX16-BS	—	—	
50	—	Vespa PK XL	—	—	CB7-A	12N7-4A	1500	98-11	VL1500 Intruder, C90, T, Boulevard C90	—	—	CTX16-BS-1	—	
25	94-98	Free, Free FL, Zip	—	—	CB4L-B	—	1400	86-88	GV1400GC, D, T Cavalcade	CTX24HL-BS	CTX18L-BS	SC50-N18L-AT ¹⁴	—	
—	—	Cosa CLX 200 (c / avv.)	—	—	CB7-A	—	1400	87-11	VS1400GL, Intruder, GLP, S83	—	—	CTX16-BS-1	—	
—	—	P200E (c / avv.)	—	—	CB9-B	—	1300	14	GSX1300R Hayabusa 50th Ann. Edition	—	—	CTX12-BS	—	
—	—	PX200-ARC	—	—	CB9-B	—	1300	08-11	GSX1300BK B-King	—	—	CTX12-BS	—	
—	—	PX200E-ARC	—	—	—	12N5.5-3B	1300	99-07	GSX1300R Hayabusa	CT12A-BS ^{FA}	CTX12A-BS	—	—	
—	—	PX200GS	—	—	CB9-B	—	1300	08-17	GSX1300R, Z Hayabusa	—	—	CTX12-BS	—	
—	—	Cosa CLX 150 (c / avv.)	—	—	CB7-A	—	1250	07-16	GSF1250S, A Bandit, FA	CT12A-BS ^{FA}	CTX12A-BS	—	—	
—	—	Excutive, Hexagon 150	—	—	CB9-B	—	1200	97-05	GSF1200, S Bandit	—	—	CTX12-BS	—	
—	—	PX150E-ARC, SKR, PX150E	—	—	CB9-B	—	1200	85-86	GV1200GL Madura	CTX14AHL-BS	—	CB14L-B2	—	
—	—	Vespa 150 GL	—	—	B39-6	—	1150	83-86	GS1150E, S	—	—	SCB14L-B2	—	
—	—	PX125+80E	—	—	—	12N5.5-3B	1100	81-01	GSX1100S Katana	—	—	SCB14L-A2	—	
—	—	Cosa CLX 125 (c / avv.)	—	—	CB7-A	—	1100	80-83	GS1100E, S	—	—	SCB14L-A2	—	
—	—	Hexagon 125	—	—	CB9-B	—	1100	82-84	GS1100G, K, L, S, Katana	CTX14AHL-BS	—	CB14L-A2	—	
—	—	Vespa P125X / ETES / P125TS / P125ETES	—	—	CB7-A	12N7-4A	1100	86-92	GSX-R1100	CTX14AHL-BS	—	CB14L-A2	—	
—	—	Vespa 125 Sprint	—	—	B39-6	—	1100	93-98	GSX-R1100 W	—	—	CTX12-BS	—	
—	—	PK80S-C.A., PK80 XL	—	—	CB7-A	12N7-4A	1100	88-93	GSX1100F Katana	CTX14AHL-BS	—	CB14L-B2	—	
—	93	Ape 50 FL	—	—	CB9-B	—	1100	91-93	GSX1100G	CTX14H-BS	CTX14-BS	—	—	
—	—	Free	—	—	CB4L-B	—	1000	11-14	GSX-R1000	—	—	CTX12A-BS	—	
—	97	Liberty, NRG 50, NTT Quartz	—	—	CB4L-B	—	1000	14	GSX-R1000 SE	—	—	CTX12A-BS	—	
—	—	Quartz, Sactto, Sfera 50, TPH, Velofax	—	—	CB4L-B	—	1000	02-16	DL1000 V-Strom, Adventure	CTX14H-BS	CTX14-BS	—	—	
—	—	Vespa 50 (Elestart) (Requires 2 Batteries)	—	—	—	6N11A-1B (x2)	1000	78-82	GS1000 Series	CTX14AHL-BS	—	CB14L-A2	—	
—	—	Vespa PK 50 FL / FL2 (c / avv.)	—	—	CB7-A	12N7-4A	1000	01-04	GSX-R1000	—	—	CTX12-BS	—	
—	—	Zip, Zip FR, Zip RST, Zip SR, Zip-Zip (Fast Rider)	—	—	CB4L-B	—	1000	05-17	GSX-R1000	CT12A-BS ^{FA}	CTX12A-BS	—	—	
—	—	PK125FL, PK125SS, PK125XL	—	—	CB7-A	12N7-4A	1000	03-07	SV1000, S	CTX14H-BS	CTX14-BS	—	—	
—	—	PK50, PK50-C.A., PK50N, PK50XL	—	—	CB7-A	12N7-4A	1000	98-03	TL1000R	CT12A-BS ^{FA}	CTX12A-BS	—	—	
—	—	APE CAR, MP, MPR, P602	CTX30L (FA)	CTX30L-BS	53030	C60-N30L-B	1000	97-01	TL1000S	—	—	CTX12-BS	—	
—	—	Boxer, Bravo, Ciao	—	—	B39-6	—	900	94-97	RF900, R, S, ZS	—	—	CTX9-BS	—	
—	—	Cosa 2	—	—	CB7-A	12N7-4A	850	79-83	GS850G, GL	CTX14AHL-BS	—	CB14L-A2	—	
—	—	PX125+80E-AREC	—	—	CB9-B	12N5.5-3B	800	14	C50 Boulevard B.O.S.S.	—	—	CTX12-BS	—	
—	—	PX125-80E-ARC	—	—	CB9-B	—	800	01-14	VL800 Intruder Volusia, Boulevard C50, T, M50	—	—	CTX12-BS	—	
—	—	PX125T5, PX150E, PX125	—	—	CB9-B	—	800	92-12	VS800 GL, S Intruder, Boulevard S50	—	—	CB16B-A1	—	
—	—	—	—	—	—	—	800	90-93	VX800	—	—	CB16B-A	—	
—	—	—	—	—	—	—	800	97-08	VZ800 Marauder	—	—	CTX12-BS	—	
—	—	—	—	—	—	—	750	15-16	GSX-S750	CT12A-BS ^{FA}	CTX12A-BS	—	—	
—	—	—	—	—	—	—	750	14	GSX-R750 50th Ann. Edition	—	—	CTX12A-BS	—	
—	—	—	—	—	—	—	750	77-83	GS750, Katana	CTX14AHL-BS	—	CB14L-A2	—	
—	—	—	—	—	—	—	750	00-17	GSX-R750	CT12A-BS ^{FA}	CTX12A-BS	—	—	
—	—	—	—	—	—	—	750	96-99	GSX-R750	—	—	CTX9-BS	—	
—	—	—	—	—	—	—	750	94-95	GSXR750W	—	—	CTX9-BS	—	
—	—	—	—	—	—	—	750	93	GSXR750W	—	—	CTX12-BS	—	
—	—	—	—	—	—	—	750	86-92	GSX-R750, GSX-R750R	CTX14AHL-BS	—	CB14L-A2	—	
—	—	—	—	—	—	—	750	89-97	GSX750F Katana	CTX14AHL-BS	—	CB14L-B2	—	
—	—	—	—	—	—	—	750	98-06	GSX750F Katana	—	—	CTX9-BS	—	
—	—	—	—	—	—	—	750	72-77	GT750 LeMans	CTX14AHL-BS	—	CB14L-A2	—	
—	—	—	—	—	—	—	750	88-91	VS750GLP Intruder	—	—	CB16B-A1	—	
—	—	—	—	—	—	—	700	85-87	VS700GL Intruder	—	—	CB16B-A1	—	
—	—	—	—	—	—	—	700	85	GS700E, GS700ES	CTX14AHL-BS	—	CB14L-A2	—	
—	—	—	—	—	—	—	700	85	GV700GL Madura	CTX14AHL-BS	—	CB14L-B2	—	
—	—	—	—	—	—	—	650	14	SV650	—	—	CTX12A-BS	—	
—	—	—	—	—	—	—	650	09-14	SPV650 Gladius	CT12A-BS ^{FA}	CTX12A-BS	—	—	
—	—	—	—	—	—	—	650	04-17	DL650 V-Strom ABS, Adventure	—	—	CTX12-BS	—	
—	—	—	—	—	—	—	650	96-97	DR650SE	—	—	CB10L-B2	—	
—	—	—	—	—	—	—	650	96-97	DR650SE (CN)	—	—	CTX9-BS	—	
—	—	—	—	—	—	—	650	98-14	DR650SE	—	—	CTX9-BS	—	
—	—	—	—	—	—	—	650	90-91	DR650S	—	—	CB5L-B	12N5-3B	
—	—	—	—	—	—	—	650	92-93	DR650S N, P	—	—	CTX4L-BS	—	
—	—	—	—	—	—	—	650	94-95	DR650S ER, ES	—	—	CTX12-BS	—	

(x2) Marked Bike Requires 2 Batteries.
FA= Factory Activated And Factory Sealed Battery.

¹⁴ AT=WIRE LEAD.

(Continued)

MOTORCYCLE/SCOOTER BATTERY APPLICATIONS



CC	Year	Model	High Performance Maintenance-Free /VRLA	Maintenance-Free AGM	High Performance (CB) Conventional	Conventional Flooded	CC	Year	Model	High Performance Maintenance-Free /VRLA	Maintenance-Free AGM	High Performance (CB) Conventional	Conventional Flooded	
650	83	GR650, Tempter, X	—	—	CB14L-A2	—	90	73-77	RV90 Rover	—	—	6N4B-2A UNV	6N4B-2A	
650	81-82	GS650E	—	—	CB10L-A2	—	90	—	TC90	—	—	6N4-2A UNV	6N4-2A	
650	81-83	GS650 (All)	—	—	CB14L-A2	—	90	—	TC90J, TC90R	—	—	6N2-2A UNV	6N2-2A-4	
650	08-11	GSX650F	—	—	—	—	90	68	Model K10, Model K10P	—	—	6N4-2A UNV	6N4-2A	
650	86-14	LS650 Savage, S40	—	—	—	—	80	68	Sport 80 (Models K11, K11P)	—	—	6N4-2A UNV	6N4-2A	
650	99-02	SV650	—	—	—	—	80	68	Trail 80 (Models K15, K15P)	—	—	6N4-2A UNV	6N4-2A	
650	03-10	SV650A, SA	—	—	—	—	75	75-77	TS75 Colt	—	—	6N4-2A UNV	6N4-2A	
650	03-13	SV650, S	—	—	—	—	70	15-17	DR-Z70	CT4B-5 ^{FA}	—	—	—	
650	83	XN85 Turbo	—	—	—	—	70	08-09	DR-Z70	CT4B-5 ^{FA}	—	—	—	
600	96-03	GSF600S Bandit	—	—	—	—	55	68	Model 31	—	—	6N2-2A UNV	6N2-2A-4	
600	97-16	GSX-R600	—	—	—	—	50	71	AC50, AS50	—	—	6N4-2A UNV	6N4-2A	
600	92-93	GSX-R600W	—	—	—	—	50	79-80	OR50	—	—	6N4B-2A UNV	6N4B-2A	
600	98-06	GSX600F Katana	—	—	—	—	50	68	Sport 50 (Model M12)	—	—	6N4-2A UNV	6N4-2A	
600	88-97	GSX600F Katana	—	—	—	—	50	74	TS50J, TS50K, TS50L, TS50R	—	—	6N4-2A UNV	6N4-2A	
600	85	SP600	—	—	—	—	SUZUKI SCOOTERS						—	—
600	94-96	RF600R, S	—	—	—	—	650	03-17	AN650 Burgman	CTX14H-BS	CTX14-BS	—	—	
550	77-82	GS550E, L, M, TX	—	—	—	—	400	03-16	AN400 Burgman	CTX9 (FA)	CTX9-BS	—	—	
550	83-86	GS550E, ES, L	—	—	—	—	200	14-17	UH200A Burgman	CTX9 (FA)	CTX9-BS	—	—	

MOTORCYCLE/SCOOTER BATTERY APPLICATIONS



CC	Year	Model	High Performance Maintenance-Free / VRLA	Maintenance-Free AGM	High Performance (CB) Conventional	Conventional Flooded	CC	Year	Model	High Performance Maintenance-Free / VRLA	Maintenance-Free AGM	High Performance (CB) Conventional	Conventional Flooded
650	—	T120 Bonneville	—	—	CB7L-B	12N7-3B	750	81-83	XJ750 Maxim, XJ750R Seca	CTX14AHL-BS	—	SCB14L-A2	—
600	03-05	Daytona 600 / 650, Speed Four	—	CTX9-BS	—	—	750	83	XJ750M Midnight Maxim	CTX14AHL-BS	—	CB14L-A2	—
600	—	6T, T20B	—	—	—	6N11A-1B	750	77-79	XS750 (All)	CTX14AHL-BS	—	CB14L-A2	12N14-3A
600	00-03	TT600	—	CTX12-BS	—	—	750	81-96	XV750 Virago (All)	—	—	CB16AL-A2	—
500	—	5TA, TR5A / R (6V)	—	—	—	6N11A-1B	750	94-98	YZF750R	—	CTX12-BS	—	—
350	—	(Early Models, 6V), 350 (6V)	—	—	—	6N11A-1B	750	99	YZF-R7	CT9B-4 ^{FA}	CT9B-BS	—	—
350	—	350 3TA, Twenty One	—	—	B38-6A	—	700	15-17	FZ-07	CTZ10S ^{FA}	CTZ10S-BS	—	—
250	—	Tigress (6V)	—	—	—	6N11A-1B	700	85-87	FZ700, FZ700 Fazer, XJ700 X, XJ700 Maxim	CTX14AHL-BS	—	CB14L-A2	—
250	—	Tigress (12V)	—	—	—	6N11A-1B (x2)	700	84-87	XV700 Virago C, XV700 Virago S	—	—	CB16AL-A2	—
200	—	Tiger	—	—	—	6N11A-1B	650	74	TX650	CTX14AHL-BS	—	CB14L-A2	12N14-3A
183	—	Tigress	—	—	—	6N11A-1B	650	73	TX650	—	—	CB12A-A	12N12A-4A-1
VESPA							650	80-83	XJ650 (All)	—	—	CB12A-A	12N12A-4A-1
300	09-13	GTS 300, GTS 300 Super	—	CTX14-BS	—	—	650	70-71	XS1	—	—	—	12N5.5-3B
250	10	GTV 250	—	CTX14-BS	—	—	650	72	XS2	—	—	CB12A-A	12N12A-4A-1
VICTORY							650	75-83	XS650	CTX14AHL-BS	—	CB14L-A2	12N14-3A
1731	08-17	All Models	CTX20HL ^{FA}	—	—	—	650	98-16	XVS650 V-Star (All)	CT12B-4 ^{FA}	CT12B-BS	—	—
1634	06-10	Vegas, Kingpin, Hammer (-08)	CTX20HL ^{FA}	—	—	—	600	09-13	XJ6, Deversion (EU)	CT12B-4 ^{FA}	CT12B-BS	—	—
1507	03-05	Vegas, Kingpin, Hammer	CTX20HL-BS	CTX20L-BS	—	—	600	84-85	FJ600	—	—	CB12A-A	12N12A-4A-1
1507	02-06	V92TC Touring Cruiser	CTX20HL-BS	CTX20L-BS	—	—	600	05-17	FZ6, R	CT12B-4 ^{FA}	CT12B-BS	—	—
1507	00-01	V92SC Sport Cruiser	CTX20HL-BS	CTX20L-BS	—	—	600	86-88	FZ600	—	—	CB12A-A	12N12A-4A-1
1507	98-04	V92C, DC Classic, Deluxe Cruiser	CTX20HL-BS	CTX20L-BS	—	—	600	89-99	FZR600 / R	—	—	CB12AL-A2	—
1200	16-17	OCTANE	CTX20HL-BS	CTX20L-BS	—	—	600	04	FZS6	CT12B-4 ^{FA}	CT12B-BS	—	—
YAMAHA MOTORCYCLES							600	86	SRX600	—	—	CB5L-B	12N5-3B
1900	14	XV1900CT Stratoliner Deluxe	CT14B-4 ^{FA}	—	—	—	600	92-98	XJ600S Seca II	—	CTX9-BS	—	—
1900	06-14	XV1900CTS Stratoliner S	CT14B-4 ^{FA}	—	—	—	600	90-95	XT600E	—	CTX9-BS	—	—
1900	12-14	XV1900S Roadliner S	CT14B-4 ^{FA}	—	—	—	600	84-89	XT600	—	—	CB5L-B	—
1900	12-14	XV1900C Raider SCL	CT14B-4 ^{FA}	—	—	—	600	86-90	YX600 Radian	—	—	CB12A-A	12N12A-4A-1
1900	08-14	XV1900C Raider, XV1900C Raider S	CT14B-4 ^{FA}	—	—	—	600	06-17	YZF-R6 (Excl. R6S)	CTZ10S ^{FA}	CTZ10S-BS	—	—
1854	08-17	Raider, Raider S	CT14B-4 ^{FA}	CT14B-BS	—	—	600	99-00	YZF-R6	CT12B-4 ^{FA}	CT12B-BS	—	—
1854	06-14	Roadliner, Stratoliner	CT14B-4 ^{FA}	CT14B-BS	—	—	600	01-09	YZF-R6, R6S	CT9B-4 ^{FA}	CT9B-BS	—	—
1700	08-14	XV1700AS Road Star S	CT14B-4 ^{FA}	—	—	—	600	95-07	YZF600R	—	CTX12-BS	—	—
1700	08-14	XV17AT Road Star, Silverado	CT14B-4 ^{FA}	CT14B-BS	—	—	550	81-83	XJ550 Maxim, R Seca	—	—	CB12A-A	12N12A-4A-1
1700	05-12	MT-01 (EU)	CT14B-4 ^{FA}	—	—	—	550	82-83	XT550	—	—	CB5L-B	12N5-3B
1700	09-17	VMAX	CTZ14S ^{FA}	CTZ14S-BS	—	—	550	82-83	XZ550R Vision	CTX14AHL-BS	—	CB14L-A2	—
1700	04-07	XV17AT Road Star, Silverado	CTX20HL-BS	CTX20L-BS	—	—	535	87-99	XV535 Virago	—	—	CB12AL-A2	—
1700	02-13	XV17P Road Star Warrior	CT14B-4 ^{FA}	—	—	—	500	78-99	SR500	—	—	CB7L-B	12N7-3B
1600	99-03	XV1600 Road Star	CTX20HL-BS	CTX20L-BS	—	—	500	73-78	TX500, XS500	CTX14AHL-BS	—	CB14L-A2	12N14-3A
1300	16-17	V Star 1300 Tourer	CTX20HL-BS	CTX20L-BS	—	—	500	76-81	XT500	—	—	—	6N6-3B-1
1300	09-16	XVS13AY V Star 1300, Stryker	CTX20HL-BS	CTX20L-BS	—	—	500	83	XV500 Virago	—	—	CB12A-A	12N12A-4A-1
1300	03-17	FJR1300, A, ES	CT14B-4 ^{FA}	CT14B-BS	—	—	450	16-17	YZ450FX	CTZ7S ^{FA}	CTZ7S-BS	CTX5L-BS	—
1300	96-13	XVZ13 Royal Star / Venture (All)	CTX20HL-BS	CTX20L-BS	—	—	450	03-17	WR450F	CTZ7S ^{FA}	CTZ7S-BS	CTX5L-BS	—
1300	86-93	XVZ13 Venture / Royale	CTX24HL-BS	CTX18L-BS	SC50-N18L-AT ¹⁴	—	400	15-17	SR400	CT4B-5 ^{FA}	—	—	—
1300	07-13	XJR1300 (EU)	CTZ14S ^{FA}	CTZ14S-BS	—	—	400	75-76	DT400 Enduro	—	—	6N4B-2A UNV	6N4B-2A-3
1200	12-14	XTZ1200 Super Tenere, ES	CTZ12S ^{FA}	—	—	—	400	77-78	DT400 Enduro	—	—	—	6N6-3B-1
1200	12-17	XT1200Z Super Tenere	CTZ12S ^{FA}	CTZ12S-BS	—	—	400	88-90	FZR400 (All)	—	—	CB12AL-A2	—
1200	86-90	FJ1200	CTX14AHL-BS	—	CB14L-A2	—	400	76-79	RD400	—	—	—	12N5.5A-3B
1200	91-93	FJ1200 (All)	CTX14H-BS	CTX14-BS	—	—	400	80-83	XS400 (All)	—	—	CB12A-A	12N12A-4A-1
1200	85-07	VMX12 V-Max	—	—	CB16AL-A2	—	400	78-00	SR400	—	—	CB7L-B	12N7-3B-1
1200	83-85	XVZ12 Venture / Royale	CTX24HL-BS	CTX18L-BS	SC50-N18L-AT ¹⁴	—	400	01-09	SR400	CT4B-5 ^{FA}	—	—	—
1100	84-85	FJ1100	CTX14AHL-BS	—	CB14L-A2	—	360	74	DT360 Enduro	—	—	6N4B-2A UNV	6N4B-2A-3
1100	82	XJ1100 Maxim	CTX24HL-BS	CTX18L-BS	SC50-N18L-AT ¹⁴	—	360	72-73	RT2, RT3 360 Enduro	—	—	6N4-2A UNV	6N4-2A-5
1100	78-81	XS1100 (All)	CTX24HL-BS	CTX18L-BS	SC50-N18L-A-LM ¹⁵	C50-N18L-A3	360	70-71	RT1, RT1B 360 Enduro	—	—	6N2-2A UNV	6N2-2A-3
1100	86-99	XV1100F G, H, J, SJ, K, SK	CTX24HL-BS	CTX18L-BS	SC50-N18L-A-LM ¹⁵	C50-N18L-A3	360	76-78	XS360	—	—	CB12A-A	12N12A-4A-1
1100	86-99	XV1100 Virago (All)	CTX24HL-BS	CTX18L-BS	SC50-N18L-A-LM ¹⁵	C50-N18L-A3	360	77	XS360-2	—	—	CB7L-B	12N7-3B
1100	99-10	XVS1100 V-Star (All)	CT14B-4 ^{FA}	—	—	—	350	87-88	BW350 Big Wheel	—	—	CB12B-B2	—
1000	87-90	FZR1000	CTX14AHL-BS	—	CB14L-A2	—	350	69	R3	—	—	CB5L-B	12N5-3B
1000	91-95	FZR1000	CTX14H-BS	CTX14-BS	—	—	350	70-75	RD350, R5, R5B, R5C	—	—	—	12N5.5A-3B
1000	06-15	FZS1000 FZ1	CTZ14S ^{FA}	CTZ14S-BS	—	—	350	84-85	RZ350	—	—	—	12N5.5-3B
1000	01-05	FZS1000 FZ1	CT14B-4 ^{FA}	CT14B-BS	—	—	350	85-00	XT350	—	—	CB3L-B	—
1000	93-94	GTS1000	CTX14H-BS	CTX14-BS	—	—	350	68	YR2 / C	—	—	—	12N5.5-3B
1000	84-85	XV1000 Virago	CTX24HL-BS	CTX18L-BS	SC50-N18L-A-LM ¹⁵	C50-N18L-A3	321	15-17	YZF-R3	CTZ28V ^{FA22}	CTX7L-BS	—	—
1000	99-03	YZF-R1	CT12B-4 ^{FA}	CT12B-BS	—	—	250	15-17	YZ250FX	CTZ7S ^{FA}	CTZ7S-BS	CTX5L-BS	—
1000	16-17	YZF-R1, M, S	CTZ7S ^{FA}	CTZ7S-BS	—	—	250	09-17	XV250YCR V Star 250	—	—	CB10L-A2	12N10-3A-2
1000	04-15	YZF-R1, M	CTZ10S ^{FA}	CTZ10S-BS	—	—	250	-13	Tricker	CTZ7S ^{FA}	CTZ7S-BS	CTX5L-BS	—
1000	97-98	YZF1000R, YZF1000RJ	CTX14H-BS	CTX14-BS	—	—	250	69-70	DS6B, DS6C	—	—	CB5L-B	12N5-3B
950	14-17	Bolt, Bolt R-SPEC	CTZ14S ^{FA}	CTZ14S-BS	—	—	250	72	DS7	—	—	—	12N5.5A-3B
950	09-16	XVS950C Copycat	CTZ14S ^{FA}	CTZ14S-BS	—	—	250	69-71	DT1, DT1B, DT1C, DT1E 250 Enduro	—	—	6N2-2A UNV	6N2-2A-3
950	09-17	XVS950CT, V V Star 950, Tourer	CTZ14S ^{FA}	CTZ14S-BS	—	—	250	68	DT1 250 Enduro	—	—	6N2-2A UNV	6N2-2A-3
920	82	XV920 Virago	CTX24HL-BS	CTX18L-BS	SC50-N18L-AT ¹⁴	—	250	72	DT2 250 Enduro	—	—	6N4-2A UNV	6N4-2A-5
920	83	XV920M Midnight Virago	CTX24HL-BS	CTX18L-BS	SC50-N18L-A-LM ¹⁵	C50-N18L-A3	250	74-76	DT250 Enduro	—	—	6N4B-2A UNV	6N4B-2A-3
920	81-83	XV920, XV920R Virago	CTX24HL-BS	CTX18L-BS	SC50-N18L-A-LM ¹⁵	C50-N18L-A3	250	77-79	DT250 Enduro	—	—	—	6N6-3B-1
900	16-17	XSR900	CTZ10S ^{FA}	—	—	—	250	73	DT3 250 Enduro	—	—	6N4-2A UNV	6N4-2A-5
900	02-13	TDM900 (EU)	CT12B-4 ^{FA}	CT12B-BS	—	—	250	73-75	RD250	—	—	—	12N5.5A-3B
900	83	XJ900R Seca	CTX14AHL-BS	—	CB14L-A2	—	250	80-87	SR250 Exciter, SRX250	—	—	CB12A-A	12N12A-4A-1
850	14-17	FZ-09, FJ-09	CTZ10S ^{FA}	CTZ10S-BS	—	—	250	99-06	TTR250	CT7B-4 ^{FA}	CT7B-BS	—	—
850	92-93	TDM850	—	CTX12-BS	—	—	250	08-17	WR250F X, R, XT250	CTZ7S ^{FA}	CTZ7S-BS	CTX5L-BS	—
850	95-99	TRX850	—	CTX12-BS	—	—	250	03-07	WR250F	CTZ7S ^{FA}	CTZ7S-BS	CTX5L-BS	—
850	80-81	XS850 (All)	CTX14AHL-BS	—	CB14L-A2	—	250	80-83	XT250	—	—	—	6N6-3B-1
800	11-13	FZ8	CTZ10S ^{FA}	CTZ10S-BS	—	—	250	84	XT250	—	—	CB3L-B	—
750	85-88	FZ750, FZR750	CTX14AHL-BS	—	CB14L-A2	—	250	88-03	XV250 Route 66, XV250 Virago	—	—	CB10L-A2	12N10-3A-2
750	73												

ATV BATTERY APPLICATIONS



CC	Year	Model	High Performance Maintenance-Free /VRLA	Maintenance-Free AGM	High Performance (CB) Conventional	Conventional Flooded	CC	Year	Model	High Performance Maintenance-Free /VRLA	Maintenance-Free AGM	High Performance (CB) Conventional	Conventional Flooded
400	04-06	TRX400 Rancher AT	—	CTX14-BS	—	—	50	07-17	KFX50	CTZ7S ^{FA}	CTX5L-BS	CT5L-BS	—
400	95-03	TRX400FW Foreman	—	CTX14-BS	—	—	KTM						
350	85	FL350R Odyssey	—	CTX12-BS	—	—	525	10-13	XC ATV	CTZ7S ^{FA}	CTX5L-BS	CT5L-BS	—
350	86-89	TRX350, D Fourtrax 4x4	—	CTX14-BS	—	—	505	08-09	XC ATV	CTZ7S ^{FA}	CTX5L-BS	CT5L-BS	—
350	00-06	TRX350 Rancher	—	CTX14-BS	—	—	505	08-13	SX ATV	CTZ7S ^{FA}	CTX5L-BS	CT5L-BS	—
300	88-00	TRX300FW Fourtrax 4x4	—	CTX14-BS	—	—	450	08-12	SX ATV, XC ATV	CTZ7S ^{FA}	CTX5L-BS	CT5L-BS	—
300	93-12	TRX300X, EX	—	CTX9-BS	—	—	KYMCO						
300	88-00	TRX300 Fourtrax	—	CTX14-BS	—	—	700	-17	MXU700	CTX20HL-BS	CTX20L-BS	—	—
250	85-87	ATC250ES Big Red	—	CTX12-BS	—	—	500	-17	MXU500	CTX20HL-BS	CTX20L-BS	—	—
250	85-87	ATC250SX	—	CTX12-BS	—	—	450	-17	Maxxer 450, MXU 450	CTX20HL-BS	CTX20L-BS	—	—
250	85-87	TRX250 Fourtrax	—	CTX12-BS	—	—	300	All Years	Mongoose300, MXU300SD	—	CTX12-BS	—	—
250	97-17	TRX250 TE, TM, FourTrax Recon	—	CTX12-BS	—	—	250	All Years	Mongoose, MXU	—	CTX12-BS	—	—
250	01-17	TRX250X, EX	—	CTX9-BS	—	—	150	All Years	MXU150	—	CTX9-BS	—	—
250	97-03	TRX250 Recon, ES	—	CTX12-BS	—	—	90	All Years	Mongoose 90	CTZ7S ^{FA}	CTX5L-BS	CT5L-BS	—
200	82-85	ATC200 Big Red, ATC200M	CTX14AH-BS	—	CB14A-A2	—	50	All Years	Mongoose 50	CTZ7S ^{FA}	CTX5L-BS	CT5L-BS	—
200	84	TRX200 Fourtrax	CTX14AH-BS	—	CB14A-A2	—	POLARIS						
200	86-88	TRX200SX Fourtrax	—	CTX12-BS	—	—	1000	14-17	Scrambler	CTX20HL (FA)	—	—	—
200	90-96	TRX200 Fourtrax	—	CTX12-BS	—	—	1000	15-17	Sportsman XP, Touring XP, HL (16)	CTX20HL (FA)	—	—	—
125	84-85	ATC125M	—	—	CB9A-A	—	900	16-17	ACE SP	CTX30L (FA)	—	—	—
125	86-87	ATC125M	—	CTX12-BS	—	—	850	10-17	Sportsman, SP, Touring XP, HL (16)	CTX20HL (FA)	—	—	—
125	85-86	TRX125 Fourtrax	—	—	CB9A-A	—	850	09-17	Sportsman (opt.) WV (std.)	CTX30L (FA) ¹⁸	—	—	—
125	87-88	TRX125 Fourtrax	—	CTX9-BS	—	—	850	14-17	Scrambler	CTX20HL (FA)	—	—	—
90	06-17	TRX90X, EX	CTZ7S ^{FA}	CTX5L-BS	CT5L-BS	—	800	05-14	Sportsman	CTX30L (FA)	CTX30L-BS	CB30L-B	—
JOHN DEERE													
—	All Years	All Models	CTX16CL-B-BS ³	—	CB16CL-B	—	800	14	Sportsman 6x6	—	—	—	—
KASEA													
250	All Years	Skyhawk 250	—	CTX7A-BS	—	—	700	-10	Sportsman	—	CTX30L-BS	—	—
170	All Years	Skyhawk 170	—	CTX7A-BS	—	—	700	02-08	Sportsman, Military	—	CTX30L-BS	CB30L-B	—
150	All Years	Skyhawk 150, Adventure Buggy	—	CTX7A-BS	—	—	600	04-05	Sportsman	—	CTX30L-BS	CB30L-B	—
125	All Years	KS, KU Models, Adventure Buggy	—	CTX7A-BS	—	—	570	15-17	ACE, ACE SP	—	—	CB14A-A2	—
90	All Years	Skyhawk 90	CTZ7S ^{FA}	CTX5L-BS	CT5L-BS	—	550	09	Sportsman Touring, XP, X2	CTX20HL-BS	—	—	—
90	All Years	KS, KU Models	—	CTX7A-BS	—	—	550	10-14	Sportsman EPS, X2, Touring	CTX14AH (FA) ¹⁸	—	—	—
65	All Years	KS, KU Models	—	CTX7A-BS	—	—	550	10	Sportsman Touring, X2	CTX20HL-BS	—	—	—
50	All Years	Mini Skyhawk	—	CTX4L-BS	—	—	550	10	Sportsman XP	CTX14AH (FA) ¹⁸	—	—	—
50	All Years	Skyhawk 50	CTZ7S ^{FA}	CTX5L-BS	CT5L-BS	—	525	08-12	Outlaw 525	—	CTX9-BS	—	—
KAWASAKI													
750	05-17	KVF750 Brute Force	—	CTX14-BS	—	—	500	06-10	Sportsman EFI	—	CTX30L-BS	—	—
700	03-10	KFX700	—	CTX14-BS	—	—	500	99-12	All Models (Excl. Predator, Sportsman)	CTX14AH-BS	—	CB14A-A2	—
700	04-06	KVF700-A, B, D Prairie 700, 4x4	—	CTX14-BS	—	—	500	96-13	Sportsman HO	CTX14AH-BS	—	CB14A-A2	—
700	04-06	KVF650-A, B, D Prairie 700, 4x4	—	CTX14-BS	—	—	500	03-06	Predator, Outlaw	—	CTX9-BS	—	—
650	02-13	KVF650 Brute Force	—	CTX14-BS	—	—	500	98-00	Ranger 6x6	CTX30L (FA)	CTX30L-BS	CB30L-B	—
450	08-14	KFX450R	—	CTX7L-BS	—	—	500	-17	ACE	CTX14AH-BS	—	CB14A-A2	—
450	02-03	4x4 Advantage Classic	—	CTX14-BS	—	—	450	16-17	Sportsman HO	—	—	—	—
400	93-00	KLF400-B Bayou 400 4x4	CTX16CL-B-BS ³	—	CB16CL-B	—	450	99-03	Diesel .445 Liter (Primary)	—	CTX30L-BS	CB30L-B	—
400	03-06	KSF400-A (KFX400)	—	CTX9-BS	—	—	450	99-03	Diesel .445 Liter (Secondary)	CTX14AH-BS	—	CB14A-A2	—
400	97-00	KVF400-A Prairie 400 4x4	CTX14AH-BS	—	CB14A-A2	—	450	07-10	Outlaw 450	—	CTX9-BS	—	—
400	97-00	KVF400-A Prairie 400 4x4 (CN)	CTX16CL-B-BS ³	—	CB16CL-B	—	425	95-02	All Models	CTX14AH-BS	—	CB14A-A2	—
400	98-00	KVF400-B Prairie 400 4x4	CTX14AH-BS	—	CB14A-A2	—	400	94-14	All Models	CTX14AH-BS	—	CB14A-A2	—
400	98-00	KVF400-B Prairie 400 4x4 (CN)	CTX16CL-B-BS ³	—	CB16CL-B	—	335	98-01	Sportsman	CTX14AH-BS	—	CB14A-A2	—
400	99-02	KVF400-C Prairie 400, 4x4	CTX14AH-BS	—	CB14A-A2	—	330	03-13	Magnum, Trail	CTX14AH-BS	—	CB14A-A2	—
400	99-02	KVF400-C Prairie 400, 4x4 (CN)	—	CTX14-BS	—	—	325	14-16	ACE	CTX14AH-BS	—	CB14A-A2	—
400	99-02	KVF400-D Prairie 400, 4x4	CTX14AH-BS	—	CB14A-A2	—	325	87-02	All Models	CTX14AH-BS	—	CB14A-A2	—
400	99-01	KVF400-D Prairie 400, 4x4 (CN)	—	CTX14-BS	—	—	300	06-10	Hawkeye, Sportsman 300	CTX14AH-BS	—	CB14-B2	—
360	-13	KVF360 Prairie	—	CTX14AH-BS	—	—	250	85-05	All Models	CTX14AH-BS	—	CB14A-A2	—
300	95-00	KEF300-A Lakota	—	CTX14AH-BS	—	—	200	05-17	Phoenix, Sawtooth	—	CTX12-BS	—	—
300	01-03	KEF300-A Lakota Sport	—	CTX14AH-BS	—	—	110	-17	Outlaw	CTZ7S ^{FA}	CTX5L-BS	CT5L-BS	—
300	01-03	KEF300-B Lakota Sport	—	CTX14AH-BS	—	—	110	-17	Sportsman	CTZ7S ^{FA}	CTX5L-BS	CT5L-BS	—
300	86-87	KLF300-A Bayou	—	CTX16CL-B-BS ³	—	—	90	03-14	Predator, Sportsman, Outlaw	CTZ7S ^{FA}	CTX5L-BS	CT5L-BS	—
300	88-04	KLF300-B Bayou	—	CTX14AH-BS	—	—	90	01-02	Scrambler, Sportsman	—	CTX4L-BS	—	—
300	92-99	KLF300-C Bayou (CN)	CTX16CL-B-BS ³	—	CB16CL-B	—	50	04-16	Outlaw, Predator (-07)	CTZ7S ^{FA}	CTX5L-BS	CT5L-BS	—
300	89-04	KLF300-C Bayou 300 4x4	—	CTX14AH-BS	—	—	50	03	Scrambler	CTZ7S ^{FA}	CTX5L-BS	CT5L-BS	—
300	92-05	KLF300-C Bayou 300 4x4 (CN)	CTX16CL-B-BS ³	—	CB16CL-B	—	50	01-02	Scrambler	—	CTX4L-BS	—	—
300	91-01	KLF300-A, B, Mule 500, 520, 550	—	CTX14AH-BS	—	—	QIANJIANG						
300	99-02	KVF300-A Prairie 300, 4x4	—	CTX14AH-BS	—	—	100	All Years	ATV100	—	CTX4L-BS	—	—
300	99-01	KVF300-A Prairie 300, 4x4 (CN)	—	CTX16CL-B-BS ³	—	—	50	All Years	ATV50	—	CTX4L-BS	—	—
300	99-02	KVF300-B Prairie 300, 4x4	—	CTX14AH-BS	—	—	SUZUKI						
300	99-02	KVF300-B Prairie 300, 4x4 (CN)	—	CTX16CL-B-BS ³	—	—	750	07-17	LT-A750 King Quad	CTX20CH-BS	—	—	—
300	13-17	KVF300 Brute Force	—	CTX12-BS	—	—	700	05-07	LT-A700X King Quad	CTX20CH-BS	—	—	—
250	03-12	KLF250-A Bayou	—	—	CB10A-A2	—	700	04-05	LT-V700F Twin Peaks	CTX14 (FA) ¹⁸	—	—	—
250	03-05	KLF250-A Bayou (CN)	—	—	CB14A-A2	—	500	-17	LT-A500 King Quad	CTX20CH-BS	—	—	—
250	82-83	KLT250-A	—	—	CB12A-A	—	500	04-07	LT-A500F Vinson 4WD	CTX20CH-BS	—	—	—
250	83	KLT250-C Prairie	—	—	CB10L-B	—	500	02-03	LT-A500F Vinson 4WD	CTX20CH-BS	CTX16-BS	—	—
250	84-85	KLT250-C Prairie	—	—	CB10L-B	—	500	00-01	LT-A500F QuadMaster	—	CTX16-BS-1	—	—
220	88-02	KLF220-A Bayou	—	—	CB10A-A2	—	500	98-03	LT-F500F QuadRunner	—	CTX16-BS-1	—	—
220	92-02	KLF220-A Bayou (CN)	—	—	CB14A-A2	—	500	04-07	LT-F500F Vinson Manual 4WD	CTX20CH-BS	—	—	—
200	81-84	KLT200-A, C	—	—	CB10L-B	—	500	03	LT-F500F Vinson Manual 4WD	CTX20CH-BS	CTX16-BS	—	—
200	83	KLT200-B, C	—	—	CB12A-A	—	450	07-11	LT-A450 King Quad	—	CTX14-BS	—	—
185	85-88	KLF185-A Bayou	—	—	CB10L-B	—	450	06-11	LT-R450 QuadRacer	—	CTX7A-BS	—	—
110	87-88	KLF110-B Mojave	—	—	CB9L-A2	—	400	02-07	LT-A400 / F400 Eiger 2WD, F Eiger 4WD	—	CTX14-BS	—	—
90	07-17	KFX90	CTZ7S ^{FA}	CTX5L-BS	CT5L-BS	—	400	-17	LT-A400 King Quad	—	CTX14-BS	—	—
80	03-05	KSF80-A (KFX80)	CTZ7S ^{FA}	CTX5L-BS	CT5L-BS	—	400	03-16	LT-Z400 QuadSport	—	CTX9-BS	—	—
							300	87-89	LT300E QuadRunner 300E	CTX14AH-BS	—	CB14A-A2	—

^{FA} Factory Activated And Factory Sealed Battery.
³ Exact Fit Without Spacer.

¹⁸ Must Be Factory Activated / Factory Sealed Battery.

(Continued)

ATV



CC	Year	Model	High Performance Maintenance-Free /VRLA	Maintenance-Free AGM	High Performance (CB) Conventional	Conventional Flooded	CC	Year	Model	High Performance Maintenance-Free /VRLA	Maintenance-Free AGM	High Performance (CB) Conventional	Conventional Flooded
300	99-02	LT-F300F KingQuad (CN, Opt)	—	—	—	—	300	99-02	LT-F300F KingQuad	—	—	—	—
300	99-02	LT-F4WDX KingQuad	—	—	—	—	300	99-02	LT-F4WDX KingQuad (Opt)	—	—	—	—
280	91-99	LT-F4WDX KingQuad	—	—	—	—	280	91-99	LT-F4WDX KingQuad (CN, Opt)	—	—	—	—
250	85-86	LT250EF QuadRunner	—	—	—	—	250	85-86	LT250EF QuadRunner	—	—	—	—
250	88-01	LT-F250 QuadRunner											

SNOWMOBILE BATTERY APPLICATIONS



CC	Year	Model	High Performance Maintenance-Free /VRLA	Maintenance-Free AGM	High Performance (CB) Conventional	Conventional Flooded	CC	Year	Model	High Performance Maintenance-Free /VRLA	Maintenance-Free AGM	High Performance (CB) Conventional	Conventional Flooded	
1056	14-15	ZR 9000 RR	CTX20H-BS	---	---	---	89-93	Jag AFS L / T	CTX14AHL-BS	---	---	CB14L-A2	---	
1056	14-15	ZR 9000 Sno Pro	CTX20H-BS	---	---	---	96	Jag Liquid	CTX14AH-BS	---	---	CB14-A2	---	
1050	15	XF 7000 Cross Country	CTX20H-BS	---	---	---	94	Jag Z	CTX14AH-BS	---	---	CB14-A2	---	
1050	14	XF 7000 Cross Country Sno Pro	CTX20H-BS	---	---	---	93	Jag Z	CTX14AHL-BS	---	---	CB14L-A2	---	
1050	14-15	XF 7000 Crosstour	CTX20H-BS	---	---	---	94-99	Jag, Jag Dix	CTX14AH-BS	---	---	CB14-A2	---	
1050	15	XF 7000 High Country	CTX20H-BS	---	---	---	85-93	Jag, Jag Dix	CTX14AHL-BS	---	---	CB14L-A2	---	
1050	14-15	XF 7000 Limited	CTX20H-BS	---	---	---	07	Jaguar	CTX20H-BS	---	---	---	---	
1050	14-15	XF 7000 LXR	CTX20H-BS	---	---	---	04-06	King Cat 900	CTX24HL-BS	---	---	C50-N18L-A-LM ¹⁵	---	
1050	14-15	XF 7000 Sno Pro	CTX20H-BS	---	---	---	91-93	Lynx	CTX14AHL-BS	---	---	CB14L-A2	---	
1050	15	ZR 7000 El Tigre	CTX20H-BS	---	---	---	05-06	M 5	CTX20H-BS	---	---	---	---	
1050	14-15	ZR 7000 Limited	CTX20H-BS	---	---	---	05-07	M 6	CTX20H-BS	---	---	---	---	
1050	14-15	ZR 7000 LXR	CTX20H-BS	---	---	---	05-06	M 7	CTX20H-BS	---	---	---	---	
1050	15	ZR 7000 RR	CTX20H-BS	---	---	---	01	Mountain Cat	CTX20H-BS	CTX20-BS	CB18-A	---	---	
1050	14-15	ZR 7000 Sno Pro	CTX20H-BS	---	---	---	02	Mountain Cat 500	CTX20H-BS	CTX20-BS	CB18-A	---	---	
1049	15	M 7000 Sno Pro 153	CTX20H-BS	---	---	---	02-04	Mountain Cat 570	CTX24HL-BS	---	C50-N18L-A-LM ¹⁵	---	---	
1049	15	Pantera 7000	CTX20H-BS	---	---	---	02-04	Mountain Cat 600	CTX20H-BS	CTX20-BS	CB18-A	---	---	
1049	15	Pantera 7000 Limited	CTX20H-BS	---	---	---	02-04	Mountain Cat 800	CTX24HL-BS	---	C50-N18L-A-LM ¹⁵	---	---	
800	07-13	F8 LXR, F800, M800, XF800	CTX20H-BS	---	---	---	03-04	Mountain Cat 900	CTX24HL-BS	---	C50-N18L-A-LM ¹⁵	---	---	
800	14-17	ZR 8000	CTX20H-BS	---	---	---	02	Mountain Cat 1000	CTX20H-BS	CTX20-BS	CB18-A	---	---	
800	14	ZR 6000	CTX20H-BS	---	---	---	99-01	Pantera	CTX20H-BS	CTX20-BS	CB18-A	---	---	
800	14-15	M 8000 Limited ES 153	CTX20H-BS	---	---	---	95-98	Pantera	CTX24HL-BS	---	C50-N18L-A-LM ¹⁵	---	---	
800	14-15	M 8000 Limited ES 162	CTX20H-BS	---	---	---	94	Pantera	CTX20H-BS	CTX20-BS	CB18-A	---	---	
800	15	XF 8000 Cross Country Limited	CTX20H-BS	---	---	---	86-93	Pantera	CTX14AHL-BS	---	---	CB14L-A2	---	
800	14-15	XF 8000 Crosstour	CTX20H-BS	---	---	---	80-85	Pantera	---	---	---	CB16L-B	---	
800	14-15	XF 8000 High Country Limited	CTX20H-BS	---	---	---	02-05	Pantera 550, 600	CTX20H-BS	CTX20-BS	CB18-A	---	---	
800	14-15	XF 8000 Limited	CTX20H-BS	---	---	---	02-04	Pantera 800	CTX24HL-BS	---	C50-N18L-A-LM ¹⁵	---	---	
800	14-15	XF 8000 LXR	CTX20H-BS	---	---	---	94-96	Panther	CTX14AH-BS	---	---	CB14-A2	---	
800	15	ZR 8000 El Tigre	CTX20H-BS	---	---	---	89-93	Panther	CTX14AHL-BS	---	---	CB14L-A2	---	
800	14-15	ZR 8000 Limited	CTX20H-BS	---	---	---	80-88	Panther	---	---	---	CB16L-B	---	
800	14-15	ZR 8000 LXR	CTX20H-BS	---	---	---	97-00	Panther 340	CTX14AH-BS	---	---	CB14-A2	---	
700	16-17	Bearcat 3000, Pantera 3000	CTX20H-BS	---	---	---	01-07	Panther 370	CTX14AH-BS	---	---	CB14-A2	---	
700	17-	ZR 3000	CTX20H-BS	---	---	---	97-03	Panther 440	CTX14AH-BS	---	---	CB14-A2	---	
600	15	XF 6000 Crosstour	CTX20H-BS	---	---	---	97-01	Panther 550	CTX20H-BS	CTX20-BS	CB18-A	---	---	
600	15	XF 6000 Limited	CTX20H-BS	---	---	---	02-07	Panther 570	CTX24HL-BS	---	C50-N18L-A-LM ¹⁵	---	---	
600	15	XF 6000 LXR	CTX20H-BS	---	---	---	06-07	Panther 660	CTX24HL-BS	---	C50-N18L-A-LM ¹⁵	---	---	
600	15	XF 6000 Sno Pro	CTX20H-BS	---	---	---	97-98	Powder Extreme	CTX20H-BS	CTX20-BS	CB18-A	---	---	
600	14	ZR 6000 El Tigre ES	CTX20H-BS	---	---	---	95-97	Powder Special	CTX20H-BS	CTX20-BS	CB18-A	---	---	
600	15	ZR 6000 Limited	CTX20H-BS	---	---	---	94	Prowler	---	---	---	CB7-A	12N7-4A	
600	15	ZR 6000 LXR	CTX20H-BS	---	---	---	90-93	Prowler	CTX14AHL-BS	---	---	CB14L-A2	---	
600	14-17	ZR 6000	CTX20H-BS	---	---	---	95	Prowler 2-Up	CTX20H-BS	CTX20-BS	CB18-A	---	---	
600	16-17	M 6000	CTX20H-BS	---	---	---	91-92	Prowler Special	CTX20H-BS	CTX20-BS	CB18-A	---	---	
600	17-	XF 6000	CTX20H-BS	---	---	---	94-96	Puma	CTX14AH-BS	---	---	CB14-A2	---	
570	08-14	F570, T570, Bearcat	CTX20H-BS	CTX20-BS	CB18-A	---	04-06	Sabercat 500	CTX20H-BS	CTX20-BS	CB18-A	---	---	
570	15	Bearcat 2000 LT	CTX20H-BS	CTX20-BS	CB18-A	---	04-06	Sabercat 600, 700	CTX24HL-BS	---	C50-N18L-A-LM ¹⁵	---	---	
570	15	Bearcat 2000 XT	CTX20H-BS	CTX20-BS	CB18-A	---	04-06	T660 Touring	CTX24HL-BS	---	C50-N18L-A-LM ¹⁵	---	---	
570	15	Lynx 2000	CTX20H-BS	CTX20-BS	CB18-A	---	04-07	T660 Turbo	CTX24HL-BS	---	---	---	---	
570	15	Lynx 2000 LT	CTX20H-BS	CTX20-BS	CB18-A	---	04-07	T660 Turbo Touring	CTX24HL-BS	---	---	---	---	
565	15-17	Lynx 2000	CTX20H-BS	---	---	---	97-02	Thundercat	CTX20H-BS	CTX20-BS	CB18-A	---	---	
565	-17	Bearcat 2000	CTX20H-BS	---	---	---	95-96	Wildcat (EFI)	---	---	---	CB7-A	12N7-4A	
500	13-14	F5	CTX20H-BS	CTX20-BS	CB18-A	---	93	Wildcat (EFI)	CTX14AHL-BS	---	---	CB14L-A2	---	
500	07-14	F5 LXR	CTX20H-BS	CTX20-BS	CB18-A	---	94	Wildcat MC	---	---	---	CB7-A	12N7-4A	
---	02-03	4 Stroke Trail, Touring	CTX24HL-BS	---	C50-N18L-A-LM ¹⁵	---	95-96	Wildcat Touring	---	---	---	CB7-A	12N7-4A	
---	95-00	Bearcat 340, 440	CTX14AH-BS	---	CB14-A2	---	98-01	Z	CTX14AH-BS	---	---	CB14-A2	---	
---	04-09	Bearcat 570	CTX24HL-BS	---	C50-N18L-A-LM ¹⁵	---	02-07	Z 370, 440	CTX14AH-BS	---	---	CB14-A2	---	
---	10-14	Bearcat 570	CTX20H-BS	---	---	---	02-08	Z 570	CTX24HL-BS	---	C50-N18L-A-LM ¹⁵	---	---	
---	06-07	Bearcat WT Turbo	CTX24HL-BS	---	---	---	02	ZL 500	CTX20H-BS	CTX20-BS	CB18-A	---	---	
---	05-07	Bearcat WT	CTX24HL-BS	---	---	---	02-03	ZL 550, 600	CTX20H-BS	CTX20-BS	CB18-A	---	---	
---	03-04	Bearcat WT	CTX24HL-BS	---	C50-N18L-A-LM ¹⁵	---	02-03	ZL 800	CTX24HL-BS	---	C50-N18L-A-LM ¹⁵	---	---	
---	95-02	Bearcat WT	CTX20H-BS	CTX20-BS	CB18-A	---	95-96	ZR (EFI)	---	---	---	CB7-A	12N7-4A	
---	91-93	Cheetah	CTX14AHL-BS	---	CB14L-A2	---	01-02	ZR 500, 600	CTX20H-BS	CTX20-BS	CB18-A	---	---	
---	86-90	Cheetah	---	---	CB16L-B	---	02-03	ZR 800	CTX24HL-BS	---	C50-N18L-A-LM ¹⁵	---	---	
---	95-98	Cougar	CTX20H-BS	CTX20-BS	CB18-A	---	03-06	ZR 900	CTX24HL-BS	---	C50-N18L-A-LM ¹⁵	---	---	
---	91-94	Cougar	CTX14AHL-BS	---	CB14L-A2	---	97-02	ZRT	CTX20H-BS	CTX20-BS	CB18-A	---	---	
---	85-90	Cougar	---	---	CB16L-B	---	BOMBARDIER-SKI-DOO						---	---
---	07	Crossfire 500	CTX20H-BS	---	---	---	1200	10-17	Grand Touring, Expedition	CTX20HL (FA) ¹⁸	---	---	---	
---	06-07	Crossfire 600	CTX20H-BS	---	---	---	1200	15-17	Expedition SE	---	CTX30L-BS	---	---	
---	06	Crossfire 700	CTX20H-BS	---	---	---	1200	09-17	Renegade, GSX, GTX, MX Z	CTX20HL (FA) ¹⁸	---	---	---	
---	87-88	El Tigre 5000	CTX14AHL-BS	---	CB14L-A2	---	1000	03-06	Expedition, Legend, Skandic	CTX24HL (FA) ¹⁸	---	---	---	
---	95-97	EXT	---	---	---	12N7-4A	900	14-17	Renegade, MX Z, Expedition, Grand Touring, Skandic	CTX20HL (FA) ¹⁸	CTX20L (FA) ¹⁸	---	---	
---	92-94	EXT	CTX14AHL-BS	---	CB14L-A2	---	850	17	Renegade X E-TEC, Adventure	CTX20HL (FA) ¹⁸	CTX20L (FA) ¹⁸	---	---	
---	89-91	EXT	---	---	CB16L-B	---	850	17	MXZ X E-TEC	CTX20HL (FA) ¹⁸	CTX20L (FA) ¹⁸	---	---	
---	95-96	EXT (Carb)	CTX20H-BS	CTX20-BS	CB18-A	---	850	17	SUMMIT E-TEC	CTX20HL (FA) ¹⁸	CTX20L (FA) ¹⁸	---	---	
---	98	EXT (EFI)	CTX20H-BS	CTX20-BS	CB18-A	---	800	04-17	Renegade, Summit, Free Ride	CTX20HL (FA) ¹⁸	CTX20L (FA) ¹⁸	---	---	
---	95-97	EXT (EFI)	---	---	---	12N7-4A	800	04-17	GSX, MX Z	CTX20HL (FA) ¹⁸	CTX20L (FA) ¹⁸	---	---	
---	97-98	EXT 600	CTX20H-BS	CTX20-BS	CB18-A	---	800	07-17	Expedition	CTX20HL (FA) ¹⁸	CTX20L (FA) ¹⁸	---	---	
---	97-98	EXT Dix (EFI)	CTX24HL-BS	---	C50-N18L-A-LM ¹⁵	---	600	04-17	Tundra, MX Z, GSX, GTX	CTX20HL (FA) ¹⁸	CTX20L (FA) ¹⁸	---	---	
---	91-92	EXT Special	CTX14AHL-BS	---	CB14L-A2	---	600	04-17	Grand Touring, Renegade	CTX20HL (FA) ¹⁸	CTX20L (FA) ¹⁸	---	---	
---	07-09	F6, F8, F1000	CTX20H-BS	---	---	---	600	06-17	Expedition, Skandic, Summit	CTX20HL (FA) ¹⁸	CTX20L (FA) ¹⁸	---	---	
---	07-09	F5	CTX20H-BS	CTX20-BS	CB18-A	---	600	15-17	Expedition SE, Skandic ACE	---	CTX30L-BS	---	---	
---	03-06	Firecat	CTX24HL-BS	---	C50-N18L-A-LM ¹⁵	---	550	07-14	MX Z, GSX, GTX	CTX20HL (FA) ¹⁸	CTX20L (FA) ¹⁸	---	---	
---	89-91	Jag AFS	CTX14AHL-BS	---	CB14L-A2	---	550	-14	Grand Touring, Renegade	CTX20HL (FA) ¹⁸	CTX20L (FA) ¹⁸	---	---	

¹⁵ LM (=YUASA 'CX' BATTERY) Low Maintenance.

¹⁸ Must Be Factory Activated / Factory Sealed Battery.

(Continued)

SNOWMOBILE BATTERY APPLICATIONS



CC	Year	Model	High Performance Maintenance-Free /VRLA	Maintenance-Free AGM	High Performance (CB) Conventional	Conventional Flooded	CC	Year	Model	High Performance Maintenance-Free /VRLA	Maintenance-Free AGM	High Performance (CB) Conventional	Conventional Flooded
550	05-17	Expedition, Skandic, Tundra	CTX20HL (FA) ¹⁸	---	---	---	500	89-14	Wide Track	CTX24HL-BS	---	C50-N18L-A-LM ¹⁵	C50-N18L-A3
300	05-17	Skandic	CTX20HL (FA) ¹⁸	---	---	---	---	93-97	All EFI (RXL, 500 EFI)	---	---	CB9A-A	---
---	-98	All Models	CTX24HL-BS	---	C50-N18L-A-LM ¹⁵	C50-N18L-A3	---	84-91	Indy, Indy Trail	CTX24HL-BS	---	C50-N18L-A-LM ¹⁵	C50-N18L-A3
---	03	All 4-stroke	CTX24HL-BS	---	---	---	---	86-90	Sprint (Electric Start)	---	---	C60-N24-A	---
---	04-06	Elite	---	---	---	---	---	97-98	Indy Ultra / XLT Touring	CTX14AH-BS	---	CB14A-A2	---
---	99-03	CK3 Types	CTX24HL-BS	---	C50-N18L-A-LM ¹⁵	C50-N18L-A3	---	92-05	All Other Models	CTX14AH-BS	---	CB14A-A2	---
---	99-01	ZX Types	---	---	---	---	---	06	FS / FST	CTX20HL-BS	CTX20L-BS	---	---
---	02-03	ZX Types	CTX20HL-BS	---	---	---	---	85-93	All Electric Start Kits	CTX24HL-BS	---	C50-N18L-A-LM ¹⁵	C50-N18L-A3
---	02-03	ZX Types	---	---	---	---	---	94-05	All Electric Start Kits	CTX14AH-BS	---	CB14A-A2	---
KAWASAKI													
All Years All Models			CTX24HL-BS	---	C50-N18L-A-LM ¹⁵	C50-N18L-A3	YAMAHA						
POLARIS													
800	11-17	Rush, Switchback, RMK	CTX20CH (FA)	---	---	---	1050	13-14	RS10 RS Venture TF	---	CTX20L-BS	CB18L-A	---
800	-10	Switchback, RMK	CTX20HL-BS	CTX20L-BS	---	---	1050	14	SR Viper LTX	CTX20H-BS	CTX20-BS	CB18-A	---
800	14-16	Indy	CTX20CH (FA)	---	---	---	1050	14	SR Viper LTX SE	CTX20H-BS	CTX20-BS	CB18-A	---
800	14-15	800 INDY SP	CTX20CH-BS	---	---	---	1050	14	SR Viper RTX SE	CTX20H-BS	CTX20-BS	CB18-A	---
800	14	800 INDY SP LE	CTX20CH-BS	---	---	---	1050	14	SR Viper XTX SE	CTX20H-BS	CTX20-BS	CB18-A	---

UTV (SIDE-BY-SIDES) BATTERY APPLICATIONS



CC	Year	Model	High Performance Maintenance-Free /VRLA	Maintenance-Free AGM	High Performance (CB) Conventional	Conventional Flooded	CC	Year	Model	High Performance Maintenance-Free /VRLA	Maintenance-Free AGM	High Performance (CB) Conventional	Conventional Flooded
ARCTIC CAT													
1000	16-17	Prowler 1000, Wildcat 1000, X, 4, LTD	---	CTX30L-BS	---	---	620	09-16	KAF620F, Mule 4010 4x4 (CN)	CTX20HL-BS	CTX20L-BS	---	---
700	-09	Prowler 700	CTX24HL-BS	---	---	---	540	---	KAF540, Mule 2010, 2020, 2030	CTX16CL-B-BS	---	CB16CL-B	---
700	10-17	Prowler 700	---	CTX30L-BS	CB30L-B	---	450	---	KAF450, Mule 1000	CTX16CL-B-BS	---	CB16CL-B	---
700	11-17	HDX	---	CTX30L-BS	---	---	400	05-16	KAF400, Mule 600, 610	CTX14AH-BS	---	CB14A-A2	---
700	16-17	Wildcat Sport, Trail	---	CTX30L-BS	---	---	300	---	KAF300, Mule 500, 520, 550	CTX14AH-BS	---	CB14A-A2	---
KYMCO													
650	06-09	Prowler 650	CTX24HL-BS	---	C50-N18L-A-LM ¹⁵	---	700	-16	UXV700	CTX20HL-BS	CTX20L-BS	---	---
550	-09	Prowler 550	CTX24HL-BS	---	---	---	500	-16	UXV500	CTX20HL-BS	CTX20L-BS	---	---
550	10-15	Prowler 550	---	CTX30L-BS	CB30L-B	---	450	-16	UXV450	CTX20HL-BS	CTX20L-BS	---	---
500	17-	Prowler 500	---	CTX20L-BS	---	---	POLARIS						
500	17-	HDX500 XT	---	CTX30L-BS	---	---	900	11-17	RZR	---	CTX30L-BS	---	---
BOMBARDIER-CAN-AM													
1000	11-17	Commander	CTX20HL (FA)	CTX20L (FA)	---	---	800	08-14	RZR	---	CTX20HL-BS	---	---
1000	16-17	Defender	CTX20HL (FA)	CTX20L (FA)	---	---	800	10-14	RZR 4, RZR S 800	---	CTX30L-BS	---	---
1000	16-17	Defender XT	---	CTX30L-BS	---	---	800	10-14	Ranger	---	CTX30L-BS	CB30L-B	---
1000	13-17	Maverick	CTX20HL (FA)	CTX20L (FA)	---	---	700	06-10	Ranger 6x6, 4x4	---	CTX30L-BS	---	---
800	11-17	Commander	CTX20HL (FA)	CTX20L (FA)	---	---	570	12-17	RZR 570	---	CTX30L-BS	CB14-B2	---
800	16-17	Defender	CTX20HL (FA)	CTX20L (FA)	---	---	570	13-17	RZR 570 EPS	---	CTX30L-BS	CB30L-B	---
800	16-17	Defender XT	---	CTX30L-BS	---	---	570	14-16	Ranger 4x4	---	CTX14AH-BS	---	CB14-B2
500	04-10	Ranger 4x4	---	CTX30L-BS	---	---	500	98-04	Ranger 6x6, 4x4	---	CTX30L-BS	CB30L-B	---
500	11-13	Ranger 4x4	---	CTX30L-BS	---	---	500	11-13	Ranger 4x4	---	CTX30L-BS	CB30L-B	---
700	08-13	MUV700 Big Red	CTX14H-BS	CTX14-BS	---	---	500	11-13	Ranger 4x4	---	CTX14AH-BS	---	CB14-B2
700	15-16	Pioneer 700	CTX14H-BS	CTX14-BS	---	---	425	02-03	Ranger 2x4	---	CTX30L-BS	CB30L-B	---
HONDA													
620	03-07	KAF620, Mule 3010 4x4 Advantage Classic	CTX20HL-BS	CTX20L-BS	---	---	400	11-14	Ranger 400	---	CTX14AH-BS	---	CB14-B2
620	---	KAF620, Mule 2500, 2510, 2520	CTX16CL-B-BS	---	CB16CL-B	---	170	16-17	RZR	---	CTX12-BS	---	---
620	---	KAF620, Mule 3000, 3010, 3020	CTX20HL-BS	CTX20L-BS	---	---	620	05	QUV620F	---	CTX20HL-BS	CTX20L-BS	---
KAWASAKI													
620	03-07	KAF620, Mule 3010 4x4 Advantage Classic	CTX20HL-BS	CTX20L-BS	---	---	620	05	QUV620F	---	CTX20HL-BS	CTX20L-BS	---
620	---	KAF620, Mule 2500, 2510, 2520	CTX16CL-B-BS	---	CB16CL-B	---	620	05	QUV620F	---	CTX20HL-BS	CTX20L-BS	---
620	---	KAF620, Mule 3000, 3010, 3020	CTX20HL-BS	CTX20L-BS	---	---	620	05	QUV620F	---	CTX20HL-BS	CTX20L-BS	---

¹⁵ LM (=YUASA "CX" BATTERY) Low Maintenance.



BATTERY SUPPLIER CROSS REFERENCE CHART

Yacht Battery	Yuasa Battery		GS-Taiwan	GS-Japan	Wal-Mart / EverStart	Exide / SuperCrank	East Penn / Deka	AutoZone	NAPA	Interstate Batteries	JCI Europe	Banner
	Standard line	Motocross	GS	GS Yuasa							VARTA	
Manufacture					Retail Store Channel			Auto Parts Channel				
Factory Activated (FA)												
CTZ7S	YTZ7S	M727ZS	--	YTZ7S	ES-TZ7S	TZ7S	--	--	--	FAITZ7S	--	--
CTZ10S	YTZ10S	M7210A	GTZ10S	YTZ10S	--	TZ10S	--	ETZ10S	--	FAITZ10S	--	--
CTZ12S	YTZ12S	M7212A	--	YTZ12S	--	TZ12S	--	GTZ12S	--	FAITZ12S	--	--
CTZ14S	YTZ14S	M72214	--	YTZ14S	--	TZ14S	--	GTZ14S	--	FAITZ14S	--	--
CT4B-5	--	--	--	GT4B-5	--	T4B-5	--	GT4B5	--	--	--	--
CT7B-4	--	--	GT7B-4	GT7B-4	--	SC7BFA	--	GT7B-4	--	--	--	--
CT9B-4	--	--	GT9B-4	GT9B-4	--	T9B-4	--	GT9B-4	--	--	--	--
CT12B-4	YT12B	M7212B	GT12B-4	GT12B-4	--	SC12BFA	--	GT12B-4	--	--	--	--
CT14B-4	--	--	GT14B-4	GT14B-4	--	--	--	GT14B-4	--	--	--	--
CT4L (FA)/CTX4L (FA)	--/--	--/--	--/GTX4L-12B	YT4L-BS/YTX4L-BS	--/--	SC4LFA/--	--/--	--/GSX4L	--/--	--/--	--/YTX4L (FA)	--/--
CT5L (FA)/CTX5L (FA)	--/--	--/--	--/GTX5L-12B	--/YTX5L-BS	--/--	SC5LFA/--	--/--	--/GSX5L	--/--	--/--	--/YTX5L (FA)	--/--
CTZ6L (FA)	--	--	GTZ6V	YTZ6V	--	--	--	--	--	--	--	--
CTX7L (FA)/CTX7A (FA)	--/--	--/--	GTX7L-12B/GTX7A-12B	YTX7L-BS/YTX7A-BS	ES-TX7L/--	SC7LFA/--	--/--	GSX7L/GSX7A	--/--	--/--	CTO7L (FA)/CTO7A (FA)	--/--
CTX9 (FA)	YTX9	M729BS	GTX9-12B	YTX9-BS	ES-TX9	SC9FA	ETX9	ETX9	ETX9	ETX9	YTX9 (FA)	50901 ETX9
CTX12 (FA)/CT12A-BS	YTX12/--	M7RH2S/--	GTX12-12B/--	YTX12-BS/YT12A-BS	ES-TX12/--	SC12FA/SC12AFA	ETX12 /--	ETX12/--	ETX12/--	ETX12/--	YTX12 (FA)/--	51401 ETX12
CTX14 (FA)	YTX14	M7RH4S	GTX14-12B	YTX14-BS	ES-TX14	SC14FA	ETX14	ETX14	ETX14	ETX14	YTX14 (FA)	51401 ETX14
CTX14H (FA)	YTX14H	M7RH4H	--	--	--	--	--	--	--	--	--	--
CTX14L (FA)	YTX14L	M7RH4L	--	--	--	--	ETX14L	ETX14L	ETX14L	ETX14L	--	--
CTX14AH (FA) 4	YTX14AH	M72H4A	GTX14A-12B	--	--	SC14AHFA	ETX15	ETX15	ETX15	ETX15	--	--
CTX14AHL (FA)	YTX14AHL	M72H4L	GTX14AL-12B	--	--	SC14AHLFA	ETX15L	ETX15L	ETX15L	ETX15L	--	--
CTX15L (FA)	YTX15L	M7215L	--	--	--	--	--	--	--	--	--	--
CTX16CL-B (FA) 3	YTX20HL-PW	M720BH-PW	--	--	ES-16L	SC16CLBFA	--	--	--	--	--	--
CTX18L (FA)	--	--	GTX18L-12B	--	--	--	--	ETX18L	ETX18L	ETX18L	--	--
CTX19 (FA)/CTX19L (FA)	--/--	--/--	--/--	--/--	--/--	--/--	ETX16L/ETX16L	ETX16L/ETX16L	ETX16L/ETX16L	ETX16L/ETX16L	--/--	--/51601 ETX16L
CTX20CH (FA)	YTX20CH	M7220C	--	--	--	--	--	--	--	--	--	--
CTX20 (FA)	YTX20	M72RBS	GTX20-12B	--	--	--	--	--	--	--	--	--
CTX20H (FA)	YTX20H	M72RHS	--	--	--	--	--	--	--	--	--	--
CTX20L (FA)	YTX20L	M720BS	GTX20L-12B	YTX20L-BS	ES-TX20L	--	ETX20L	ETX20L	ETX20L	ETX20L	YTX20L (FA)	52001 ETX20L
CTX20HL (FA)	YTX20HL	M720BH	--	--	--	SC20HLFA	--	--	--	--	--	--
CTX24HL (FA)	YTX24HL	M7250H	--	--	--	SC24HLFA	ETX18L	--	--	FAITZ24HL	--	--
CTX30L (FA)	YIX30L	M7230L	GTX30L-12B	--	ES-TX30L	SC30LFA	ETX30L	--	ETX30L	--	--	53001 ETX30L
Bottle Supplied (BS)												
CTZ7S-BS	--	--	--	--	--	--	--	--	--	--	TTZ7S-BS	--
CTZ10S-BS	--	--	GTZ10S-BS	--	--	10SBS	--	GTZ10S-BSFP	10SBS	--	TTZ10S-BS	--
CTZ12S-BS	--	--	--	--	--	--	--	--	--	--	TTZ12S-BS	--
CTZ14S-BS	--	--	--	--	--	--	--	--	--	--	TTZ14S-BS	--
CT7B-BS	YT7B-BS	M6277B	GT7B-BS	YT7B-BS	--	--	--	--	--	--	YT7B-BS	--
CT9B-BS	YT9B-BS	M6249B	GT9B-BS	--	--	--	--	--	--	--	YT9B-BS	--
CT12B-BS	YT12B-BS	M6212B	GT12B-BS	YT12B-BS	--	--	--	--	--	--	YT12B-BS	--
CT14B-BS	YT14B-BS	M624B4	--	--	--	--	--	--	--	--	YT14B-BS	--
CTR4A-BS	YTR4A-BS	M62R4A	--	YTR4A-BS	--	--	--	--	--	--	YTR4A-BS	--
CT4L-BS/CTX4L-BS	--/YTX4L-BS	--/M62X4B	GT4L-BS/GTX4L-BS	YT4L-BS/YTX4L-BS	--/ES4LBS	SC4LBS/--	--/--	CT4L-BSFP/--	--/4LBS	--/--	YT4L-BS/--	--/50314 YTX4L-BS
CT5L-BS/CTX5L-BS	--/YTX5L-BS	--/M32X5B	--/GTX5L-BS	--/YTX5L-BS	--/ES5LBS	SC5LBS/--	--/--	CT5L-BSFP/--	--/5LBS	--/CITX5L-BS	--/YTX5L-BS	--/50412 YTX5L-BS
CTX7L-BS	YTX7L-BS	M327BS	GTX7L-BS	YTX7L-BS	--	SC7LBS	--	CTX7L-BSFP	7LBS	CITX7L-BS	YTX7L-BS	50614 YTX7L-BS
CTX7A-BS	YTX7A-BS	M32X7A	GTX7A-BS	YTX7A-BS	--	SC7ABS	--	CTX7A-BSFP	7ABS	CITX7A-BS	YTX7A-BS	50615 YTX7A-BS
CTX9-BS	YTX9-BS	M329BS	GTX9-BS	YTX9-BS	ES9BS	SC9BS	--	CTX9-BSFP	9BS	CITX9-BS	YTX9-BS	50812 YTX9-BS
CTX12-BS	YTX12-BS	M3RH2S	GTX12-BS	YTX12-BS	ES12BS	SC12BS	--	CTX12-BSFP	12BS	CITX12-BS	YTX12-BS	51012 YTX12-BS
CTX12A-BS	YTX12A-BS	M32ABS	GT12A-BS	YTX12A-BS	--	--	--	CTX12A-BSFP	12ABS	--	YTX12A-BS	--
CTX14-BS	YTX14-BS	M3RH4S	GTX14-BS	YTX14-BS	ES14BS	SC14BS	--	CTX14-BSFP	14BS	CITX14-BS	YTX14-BS	51214 YTX14-BS
CTX14H-BS/CTX14L-BS	YTX14H-BS/YTX14L-BS	M6RH4H/M3RH4L	--/--	--/--	--/--	--/14LBS	--/--	--/GTX14L-BSFP	--/--	--/--	--/YTX14L-BS	--/--
CTX14AH-BS 4	YTX14AH-BS	M62H4A	GTX14A-BS	--	ES14AHBS	SC14AHBS	--	CTX14AH-BSFP	14AHBS	--	YTX14AH-BS	--
CTX14AHL-BS	YTX14AHL-BS	M62H4L	GTX14AL-BS	--	--	SC14AHLBS	--	CTX14AHL-BSFP	14AHLBS	--	YTX14AHL-BS	--
CTX15L-BS	YTX15L-BS	M6215L	--	--	--	SC15LBS	--	CTX15L-BSFP	15LBS	--	--	51314 YTX15L-BS
CTX16-BS	YTX16-BS	M32X6S	--	--	--	SC16BS	--	CTX16-BSFP	--	--	YTX16-BS	51422 YTX16-BS
CTX16-BS-1	YTX16-BS-1	M32X61	--	--	--	SC16BS (1)	--	CTX16-BS-1FP	--	--	YTX16-BS-1	--
CTX16CL-B-BS 3	YTX20HL-BS-PW	M620BH-PW	--	--	--	SC16CLBBS	--	--	--	CITX16CL-B-BS	YTX16CL-B-BS	--
CTX18L-BS	--	--	GTX18L-BS	--	--	SC18LBS	--	--	18LBS	--	--	52214 YTX50L-BS
CTX19-BS/CTX19L-BS	--/--	--/--	--/--	--/--	--/--	--/SC16LBS	--/--	--/--	16BS/16LBS	--/--	--/--	--/--
CTX20CH-BS	YTX20CH-BS	M6220C	--	--	--	SC20CHBS	--	CTX20CH-BSFP	--	--	YTX20CH-BS	51822 YTX20CH-BS
CTX20-BS	YTX20-BS	M32RBS	GTX20-BS	--	--	SC20BS	--	CTX20-BSFP	20BS	CITX20-BS	YTX20-BS	--
CTX20H-BS	YTX20H-BS	M62RHS	--	--	--	SC20HBS	--	CTX				

BATTERY SUPPLIER CROSS REFERENCE CHART

Yacht Battery	Yuasa Battery		GS-Taiwan	GS-Japan	Wal-Mart / EverStart	Exide / SuperCrank	East Penn / Deka	AutoZone	NAPA	Interstate Batteries	JCI Europe VARTA	Banner
	Standard line	Motocross	GS	GS Yuasa	Retail Store Channel	Auto Parts Channel						
CB12A-A	YB12A-A	M3212Y	CB12A-A	YB12A-A	ES12AA	SC12AA	--	CB12A-AFP	12AA	IB12A-A	YB12A-A	51211 YB12A-A
SCB12A-A ¹²	--	--	SCB12A-A	--	--	--	--	--	--	--	--	--
CB12A-B	YB12A-B	M222AB	CB12A-B	YB12A-B	--	--	--	CB12A-BFP	--	IB12A-B	YB12A-B	51215 YB12A-B
CB12AL-A/A2 ¹¹	YB12AL-A/A2	M3221Y/M2221Z	CB12AL-A/A2	YB12AL-A/A2	--	SC12ALA/--	--	--/CB12AL-A2FP	12ALA/--	IB12AL-A/A2	--/YB12AL-A2	--/51213 YB12AL-A2
CB12B-B2	YB12B-B2	M221B2	CB12B-B2	YB12B-B2	--	--	--	CB12B-B2FP	--	IB12B-B2	--	--
CB12C-A	YB12C-A	M322CA	CB12C-A	YB12C-A	--	SC12CA	--	CB12C-AFP	12CA	IB12C-A	--	--
CB14-A2	YB14-A2	M3214H	CB14-A2	YB14-A2	--	SC14A2	--	CB14-A2FP	14A2	IB14-A2	YB14-A2	51412 YB14-A2
CB14-B2	YB14-B2	M224B2	CB14-B2	YB14-B2	--	--	--	CB14-B2FP	--	IB14-B2	YB14-B2	51414 YB14-B2
CB14A-A1/A2 ¹³	YB14A-A1/A2	M324A1/M3214A	CB14A-A/A2	YB14A-A/A2	--/ES14AA2	--/SC14AA2	--	--/CB14A-A2FP	14AA1/A2	--/IB14A-A2	--/YB14A-A2	--
CB14L-A1	YB14L-A1	M22141	CB14L-A1	YB14L-A1	--	--	--	CB14L-A1FP	--	IB14L-A1	--	--
CB14L-A2	YB14L-A2	M3214Y	CB14L-A2	YB14L-A2	ES14LA2	SC14LA2	--	CB14L-A2FP	14LA2	IB14L-A2	YB14L-A2	51411 YB14L-A2
SCB14L-A2/B2 ¹²	YB14L-A2/B2	M2214S/--	SCB14L-A2/B2	YB14L-A2/--	--	--	--	--	--	--	--	--
CB14L-B2	YB14L-B2	M2214B	CB14L-B2	YB14L-B2	--	--	--	CB14L-B2FP	14LB2	IB14L-B2	YB14L-B2	51413 YB14L-B2
CB16-B	YB16-B	M3216Y	CB16-B	YB16-B	ES16B	SC16B	--	--	16B	IB16-B	YB16-B	51912 YB16-B
CB16-B-LM ¹⁵	YB16-B-CX	M2216C	--	--	--	--	--	--	--	IB16-B-LM	--	--
CB16HL-A-LM ¹⁵	YB16HL-A-CX	M2H16C	--	--	--	--	--	CB16HL-A-LMFP	--	IB16HL-A-LM	--	51915 YB16HL-A-CX
CB16L-A	--	--	CB16L-A	--	--	--	--	--	--	--	--	--
CB16L-B	YB16L-B	M2216K	CB16L-B	YB16L-B	--	SC16LB	--	--	16LB	IB16L-B	YB16L-B	--
SCB16L-B ¹²	YB16L-B	--	--	--	--	--	--	--	--	--	--	--
CB16AL-A2	YB16AL-A2	M32162	CB16AL-A2	YB16AL-A2	--	SC16ALA2	--	--	16ALA2	IB16AL-A2	YB16AL-A2	51616 YB16AL-A2
CB16B-A/A1 ¹¹	YB16B-A/A1	M2216B/M32161	--/--	YB16B-A/A1	--/--	--/--	--/--	CB16B-AFP/A1FP	16BA/A1	IB16B-A/A1	YB16B-A/A1	--/51615 YB16B-A1
CB16C-B	YB16C-B	M226CB	--	--	--	--	--	--	--	IB16C-B	--	--
CB16CL-B	YB16CL-B	M226CL	CB16CL-B	YB16CL-B	ES16CLB	SC16CLB	--	CB16CL-BFP	16CLB	IB16CL-B	YB16CL-B	--
HCB16A-A/AB	--/HYB16A-AB	--/M3216H	HCB16A-A/--	--/HYB16A-AB	--/--	--/SC16AA	--/--	HCB16A-AFP/--	--/16AAB	--/HIB16A-AB	--/--	--/--
CB18-A	YB18-A	M3218Y	CB18-A	YB18-A	--	--	--	CB18-AFP	18A	IB18-A	--	--
CB18L-A/A2	YB18L-A/--	M2218L/--	CB18L-A/A2	YB18L-A/--	--/--	SC18LA/--	--/--	--	18LA/--	IB18L-A/--	YB18L-A/--	--/--
C50-N18A-A	Y50-N18A-A	M228AY	--	--	--	--	--	C50-N18A-AFP	--	IS0-N18A-A	--	--
C50-N18L-A	Y50-N18L-A	M3218Y	--	Y50-N18L-A	--	--	--	C50-N18L-AFP	--	IS0-N18L-A	--	52012 Y50-N18L-A
C50-N18L-A2	--	--	--	--	--	--	--	--	--	--	Y50-N18L-A2	--
C50-N18L-A3	Y50-N18L-A3	M328A3	C50-N18L-A3	Y50-N18L-A3	ES50N18LA3	SC50N18LA3	--	C50-N18L-A3FP	50N18LA3	--	--	52011 Y50-N18L-A3
C50-N18L-A-LM ¹⁵	Y50-N18L-A-CX	M2218C	--	--	--	--	--	--	--	IS0-N18L-A-LM	--	--
SC50-N18L-A ¹²	Y50-N18L-A	M3218Y	SC50-N18L-A3	--	--	--	--	--	--	--	--	--
SC50-N18L-AT ^{12,14}	Y50-N18L-AT	M22S8T	--	--	--	--	--	--	50N18LAT	SI50-N18L-AT	SY50-N18L-AT	--
C60-N24-A/C60-N24L-A	Y60-N24-A/--	--	--/C60-N24L-A	--/Y60-N24L-A	--/--	--/--	--/--	--/C60N24LAFP	--/--	IS0-N24-A/--	--/--	--/52816 Y60-N24L-A
C60-N24L-A2/C60-N24L-B	--/Y60-N24L-A-B	--	C60-N24L-A2/--	--	--	--	--	--	--	--	--	--
C60-N30L-B (53030)	YB30L-B	M3230L	--	53030	--	--	--	53030	--	53030	YB30L-B	53015 YB30L-B
CB30CL-B	YB30CL-B	M3230C	--	--	--	--	--	CB30CL-B	--	IB30CL-B	--	--

¹¹ With L Shape Adapter (See Page 34).
¹² S=ELECTROLYTE SENSOR (See Page 34), Some Motorcycles Are Factory-Equipped With A Sensor To Monitor Electrolyte Levels.
¹³ AT=WIRE LEAD (See Page 34).
¹⁴ LM (=YUASA "CX" BATTERY) Low Maintenance.
¹⁵ New UNV Wire Lead Kit Replaces The Need To Stock Multiple Part Numbers In The Same Family.

ACID BOTTLES

CAUTION - Select The Correct Electrolyte (Acid) Volume
 Make sure the electrolyte (acid) is as specified for your battery part number.
 Do not use if the number is not identical or battery performance and life may be affected.

Acid Volume		Type	ACID PACK FOR CONVENTIONAL BATTERY					
O.Z.	C.C.		Specific Gravity : 1.28					
5.07	150	A	6N2-2A/UNV	6N2-2A-1/2	6N2-2A-3/4	6N2-2A-5/6	6N2-2A-7/8	6N2-2D
8.12	240		6N2A-2C/UNV	6N2A-2C-1	6N2A-2C-2	6N2A-2C-3		
			CB2.5L-C/-1	CB2.5L-C-2/3	CB3L-A/B	6N4-2A/UNV	6N4-2A-1/2	6N4-2A-3/4
			6N4-2A-5/6	6N4-2A-7/8	6N4A-4D/-1	6N4B-2A/UNV	6N4B-2A-1	6N4B-2A-2/3
11.16	330	B	6N4B-2A-4/5	6N4C-1B	6N5.5-3D	6N5.5-1D	6N5.5-1D-1	6N6-1B
12.85	380		6N6-1B-1	6N6-3B	6N6-3B-1	6N6-1D	6N6-1D-2	6N6-1C
13.53	400		CB4L-A	CB4L-B				
12.85/14.20	380/420	C	CB5L-A	CB5L-B	12N5-3B	12N5-4B		
19.28	570		CB6-A/B	CB6L-A/B	B49-6	6N11-2D	6N11-4D	6N12A-2C=B54-6
			6N12A-2D=B54-6A	6CB8-3B=6CB8L-B	6CB11-2D	CB6.5L-B		
			CB7-A	CB7A-A	CB7B-B	CB7BL-B	CB7C-A	CB7L-A/B
25.37	750	CB9A-A	CB9-B	CB9L-B/A2	12N5.5-3B	12N5.5-4A/-1	12N5.5-4B	
		12N7-3A	12N7-3B/-1	12N7-4A	12N7-4A-1	12N7-4B	12N7B-3A/4A	
		12N7C-3D	12N7CZ-3D	12N7D-3B	12N9-3A	12N9-3A-1	12N9-3B/4B	
28.75	850	12N9-4B-1	6N11A-1B=6N12AH	6N11A-3/4	6N11A-3A/4A	B38-6A		
		CB10A-A2	CB10L-A2	CB10L-B	CB10L-B2	CB12A-A/B	CB12AL-A/A2	
		SCB12A-A	CB12B-B2	CB12C-A	12N10-3A	12N10-3A-1/2	12N10-3B	
58.85	1740	12N10-3B-1	12N11-3A	12N11-3A-1	12N11-3B	12N12A-4A-1	ML3-6P	
		CB14-A2	CB14-B2	CB14A-A1	CB14A-A2	CB14L-A1	CB14L-A2	
		CB14L-B2	SCB14L-A2	SCB14L-B2	12N14-3A	12N14-3B		

Acid Volume		Type	LIMITED QUANTITY REGULATION - ACID BOTTLES OVER 1.0 LITERS MUST BE SEPARATED INTO 2 BOTTLES. EACH BOTTLE MUST BE LESS THAN 1.0 LITER.					
O.Z.	C.C.		Specific Gravity : 1.32					
37.20	1100	*E 2 bottles	CB16AL-A2	CB16B-A	CB16B-A1/A2	HCB16A-A	HCB16A-AB	CB18-A
42.61	1260		CB18L-A/A2	12C16A-3A=51913	12C16A-3B=51814=12N16AH			
			CB16-B	CB16L-A/A2	CB16L-B	CB16C-B	CB16CL-B	SCB16L-B
			12N16-3A/3B	12N16-4B	CB16-B-LM	CB16HL-A-LM		
44.64	1320	*F 2 bottles	C50-N18A-A	C50-N18L-A	C50-N18L-A2	C50-N18L-A3	SC50-N18L-A	SC50-N18L-AT
58.85	1740		12N18-3	12N18-3A	12N18-3B	C50-N18L-A-LM		
			C60-N24-A	C60-N24L-A	C60-N24L-A2	C60-N24L-B	C60-N25L-A=52515	
64.26	1900		C60-N28L-A=52816	C60-N30L-B=53030	C60-N30L-A	CB30L-B	CB30CL-B	B68-12
			12N24-3	12N24-3A/B	12N24-4	12N24-4A	53034	
			CHD4-12=H-12					

Acid Volume		Type	ACID PACK FOR MAINTENANCE-FREE AGM BATTERY					
O.Z.	C.C.		Specific Gravity : 1.32					
4.67	138	G	CTR4A-BS					
6.29	186	H	CT4L-BS	CTX4L-BS				
8.12	240	I	CT5L-BS	CTX5L-BS	CTZ7S-BS	CTZ6L-BS		
11.36	336	J	CTX7L-BS					
10.55/11.77	312/348	K	CT7B-BS	CTX7A-BS				
14.20	420	L	CTX9-BS	CT9B-BS	CTZ10S-BS			
17.05/18.26/	504/540/	M	CTX12A-BS	CTZ12S-BS	CTZ14S-BS	CT12B-BS	CTX12-BS	CT14B-BS
20.29	600							
22.32	660	N	CTX14-BS	CTX14L-BS	CTX14H-BS	CTX15L-BS		
22.93	678	O	CTX14AH-BS	CTX14AHL-BS				
26.99	798	P	CTH16-12	CTX16-BS	CTX16-BS-1	CTX20CH-BS		
29.42	870	Q	CTX20-BS	CTX20L-BS	CTX20H-BS	CTX20H-BSA	CTX20HL-BS	
35.51	1050	R	CTX16CL-B-BS	CTX19-BS	CTX19L-BS			
40.58	1200	S	CTX18-BS	CTX18L-BS	CTX24HL-BS			
49.72	1482	T	CTX30L-BS	CTX30L-BSA				
52.76	1560			CTX30CL-B-BS				

* To meet Limited Quantity regulations, they must be separated into 2 bottle Types E & F with each bottle being less than 1.0 liter.
 1 Gal=3785cc.

TERMINAL CONFIGURATIONS

Type	3D Terminal	Terminal Shape			Battery Type						
		Front	Side	Top							
A					CTH16-12/(FA) 12N7CZ-3D	CTX16-BS-1/(FA)	CB14L-A1	CB16B-A1	CB7C-A	12N7C-3D	
B					CB9L-A2	CB16AL-A2	12N5.5-4A	12N5.5-4A-1			
C					C60-N24-A 12N24-3A	C60-N24L-A 12N24-3B	C60-N24L-A2 12N24-4	C60-N24AL-B 12N24-4A	B68-12	12N24-3	
D					CTZ5S CT5L-BS/(FA) CTX14L-BS/(FA) CTX20CH-BS/(FA) CTX20-BS/(FA) CT/CTX4L-BS/(FA) CT7B-BS CTX30CL-B-BS CB16C-B	CTZ7S CTX7L-BS/(FA) CTX14H-BS/(FA) CTX16CL-B-BS/(FA) CTX20L-BS/(FA) CTX5L-BS/(FA) CT9B-BS CB4L-A/B CB16CL-B	CTZ8V CTX7A-BS/(FA) CTX14AH-BS/(FA) CTX18-BS/(FA) CTX20H-BS/(FA) CTZ7S-BS CT12B-BS CT12C-A C50-N18L-A3	CTZ10S CTX9-BS/(FA) CTX12-BS/(FA) CTX14AHL-BS/(FA) CTX18L-BS/(FA) CTX20HL-BS/(FA) CTZ10S-BS CT14B-BS CB14A-A2 ¹³ CB30L-B	CTZ12S CTX12-BS/(FA) CTX15L-BS/(FA) CTX19-BS/(FA) CTX24HL-BS/(FA) CTZ12S-BS CTX12A-BS CB16L-A2 CB30CL-B	CTZ14S CTX14-BS/(FA) CTX16-BS/(FA) CTX19L-BS/(FA) CTX30L-BS/(FA) CTZ14S-BS CTZ6L-BS/(FA) CB16B-A/A2	
E					CB3L-A/B CB7A-A CB9L-B CB16-B 12N5.5-3B/4B 12N7B-3A/4A 12N10-3B/-1 B39-6=6N7-1 6N11-4D	CB5L-A/B CB7B-B CB10L-B CB16-B-LM 12N5.5A-3B 12N7D-3B 12N11-3A/3B B49-6 ML3-6P	CB6-A/B CB7BL-B CB12A-A/B CB16HL-A-LM 12N7-3A 12N9-3A/-1 12N12A-4A-1 6N11-2D 6N12A-2C=B54-6	CB6L-A/B CB7L-A/B CB9A-A CB12AL-A/A2 SCB16L-B 12N7-4A/-1 12N9-4B/-1 12N16-4B 6N11A-1B=6N12AH 6N11A-3/4 6N12A-2D=B54-6A 6CB8-3B=6CB8L-B	CB6.5L-B CB9A-A CB12AL-A/A2 SCB16L-B 12N5-3B/4B 12N7-4B 12N10-3A/-1 6N6-3B/-1 6N11A-3A/4A 6CB11-2D	CB7-A CB9-B CB14A-A1 ¹³ 12N5-3B/4B 12N7-4B 12N10-3A/-1 6N6-3B/-1 6N11A-3A/4A 6CB11-2D	
F					HCB16A-A C50-N18L-A C50-N18L-A-LM	HCB16A-AB C50-N18L-A2	CB18-A SC50-N18L-A	CB18L-A SC50-N18L-AT	CB18L-A2 12N18-3A	C50-N18A-A 12N18-3B	
G					CB10A-A2 CB14L-A2 12N14-3A	CB10L-A2 CB14L-B2 12N14-3B	CB10L-B2 SCB14L-A2	CB12B-B2 SCB14L-B2	CB14-A2 12N10-3A-2	CB14-B2 12N11-3A-1	
H					CHD4-12=H-12						
I					51913 (FA) 12C16A-3B=51814=12N16AH	C60-N25L-A=52515 12N16AH	C60-N28L-A=52816 12C16A-3A=51913	C60-N30L-B=53030	C60-N30L-A	53034	
J					CT12A-BS	CT7B-4	CT9B-4	CT12B-4	CT14B-4		
K					12N18-3	B38-6A					
L					H-2	6V 24AH					
M					U1-32=U1-Rhino						
N					CT4B-5						
O					CTR4A-BS						
P					CTX20H-BSA	CTX20HL-BSA	CTX30L-BSA				
R					U1-35R						

HARDWARE KITS

Part No.	Description		Battery Type				
	Bolt	Nut					
00510-4	5 x 10 mm	5 mm Square	CTZ5S CT5L-BS/(FA) CT7B-BS	CTZ7S CTX7L-BS/(FA) CB4L-A/B	CT6B-3 CTX4L-BS/(FA) CB9L-A2	CT7B-4 CTX5L-BS/(FA) 12N5.5-4A/-1	CT4L-BS/(FA) CTZ7S-BS CTZ6L-BS/(FA)
00510-6	5 x 10 mm	5 mm Hex	CB3L-A/B 12N5.5A-3B	CB5L-A/B 6N6-3B/-1	CB6-A/B CB6.5L-B	CB6L-A/B 6CB8-3B=6CB8L-B	12N5-3B/4B B39-6=6N7-1
00610-4	6 x 10 mm	6 mm Square	CT9B-BS	CT12B-BS	CT14B-BS		
00610-6	6 x 10 mm	6 mm Hex	CB7B-B 12N7C-3D 6N11A-3A/4A	CB7BL-B 12N7CZ-3D 6N11-4D	CB7C-A 6N11-2D 6N12A-2C=B54-6	12N5.5-3B/4B 6N11A-1B=6N12AH 6N12A-2D=B54-6A	12N7B-3A/4A 6N11A-3/4 6CB11-2D
00612-6	6 x 12 mm	6 mm Hex	CTH16-12/(FA) CB9A-A CB12AL-A 12N7-3B-1 12N9-3B/4B 12N10-3B-1 B38-6A	CTX16-BS-1/(FA) CB9-B SCB12A-A ¹² 12N7-4A/-1 12N9-4B-1 12N11-3A/3B	CB7-A CB9L-B CB14L-A1 12N7-4B 12N10-3A 12N12A-4A-1 B49-6	CB7A-A CB10L-B CB16B-A1 12N7D-3B 12N10-3A-1 12N10-3A	CB7L-A/B CB12A-A/B 12N7-3A/3B 12N9-3A/-1 12N10-3B ML3-6P
00613-4	6 x 13 mm	6 mm Square	CTZ10S CT14B-4 CTX14-BS/(FA) CTX20CH-BS/(FA) CTX20-BS/(FA) CTZ10S-BS CB10L-A2/B2 CB14L-A2/B2 HCB16A-A/AB C50-N18L-A3 12N11-3A-1	CTZ12S CTX7A-BS/(FA) CTX14H-BS/(FA) 12N18-3A/3B CTX20L-BS/(FA) CTZ12S-BS CB12B-B2 SCB14L-A2/B2 ¹² CB18-A C50-N18L-A-LM 12N14-3A/3B	CTZ14S CTX9-BS/(FA) CTX14AH-BS/(FA) CTX18-BS/(FA) CTX20H-BS/(FA) CTZ14S-BS CB12C-A CB16L-A2 CB18L-A/A2 C50-N18A-A SC50-N18L-A ¹²	CT9B-4 CTX12-BS/(FA) CTX14AHL-BS/(FA) CTX19-BS/(FA) CTX20HL-BS/(FA) CTX12A-BS CB14-A2/B2 CB16AL-A2 C50-N18A-A SC50-N18L-AT ^{12,14}	CT12B-4 CT12A-BS CTX16-BS/(FA) CTX19L-BS/(FA) CTX24HL-BS/(FA) CB10A-A2 CB14A-A2 CB16B-A/A2 C50-N18L-A/A2 12N10-3A-2
00613-4	6 x 13 mm	8 mm Square	CB16C-B	CB16CL-B	CB30CL-B	CTX16CL-B-BS/(FA)	CTX30CL-B-BS
00616-6	6 x 16 mm	6 mm Hex	U1-32(U1-Rhino) SCB16L-B ¹² C60-N25L-A=52515 CHD4-12=H-12 12C16A-3B=51814=12N16AH 12N24-4A	51913 (FA) C60-N24-A C60-N28L-A=52816 12N16-3A 12N18-3 12N24-3/4	C60-N24L-A C60-N30L-B=53030 C60-N30L-A 12N16-3B 12N18-3 12N24-3/4	C60-N24L-A2 C60-N30L-A 12N16-4B 12N24-3/4	CB16L-A/B C60-N24AL-B B68-12 12C16A-3A=51913 12N24-3A/3B
00612-6L	6 x 12 mm	L Adapter & 6 mm Hex	CB12AL-A2 ¹¹	CB16B-A1 ^{11*}		With L Shape Adapter	
00616/24-6	6 x 16 mm 6 x 24 mm	8 mm Length Spacer & 6 mm Hex	CB16-B *	CB16L-B *	CB16-B-LM *	CB16HL-A-LM *	
00613/20-4	6 x 13 mm 6 x 20 mm	8 mm Length Spacer & 6 mm Square	CTX14L-BS/(FA) CTX19-BS/(FA) *	CTX15L-BS/(FA) CTX19L-BS/(FA) *	CTX30L-BS/(FA) CTX20-BS/(FA) *	CTX18L-BS/(FA) CTX20L-BS/(FA) *	
00613-L	6 x 13 mm	6 mm Flush Mount Brass Adapter Nut	CTX20H-BSA	CTX20HL-BSA	CTX30L-BSA		
00612-U	6 x 12 mm	Washer	CTX19L-U				

* Stainless Steel Nut & Bolt, Brass Spacer Set Available.
* Optional With Surcharge.

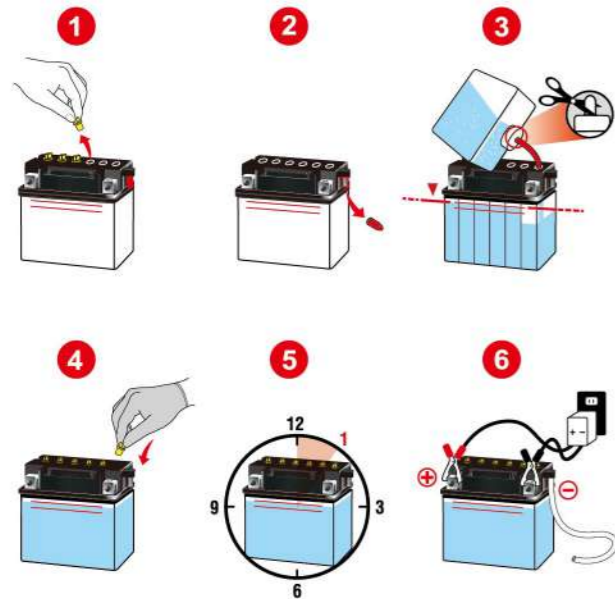
¹¹ With L Shape Adapter.

¹² S=ELECTROLYTE SENSOR, Some Motorcycles Are Factory-Equipped With A Sensor To Monitor Electrolyte Levels.

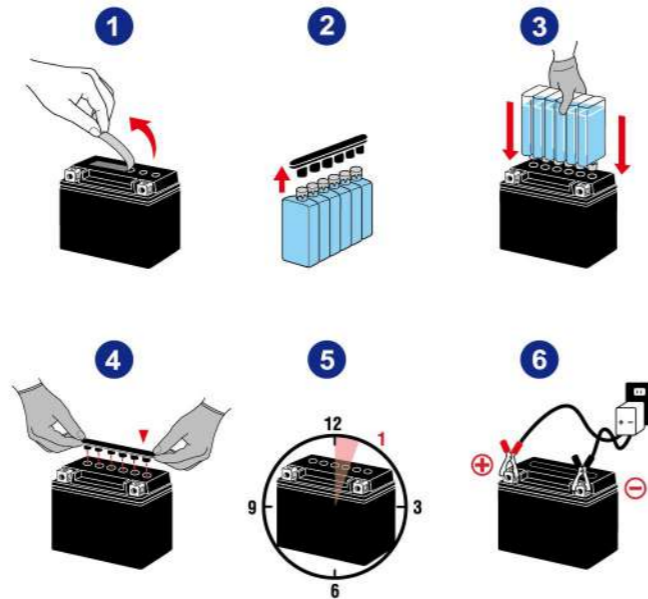
¹⁴ AT=WIRE LEAD.

HOW TO CHARGE A POWERSPORTS BATTERY

CONVENTIONAL



AGM



SUMMARY OF THE DIFFERENT TYPES OF CHARGERS

CONSTANT CURRENT CHARGER

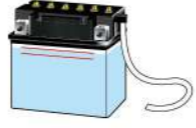

A professional quality charger which supplies a current to the battery at all levels of charging. You select the charging current. As the battery voltage increases the amount of charge, the charger automatically increases the charging voltage to maintain the current output.

HIGH RATE AUTOMOTIVE CHARGER

NOT to be used for Powersports or small engine batteries. It forces a high current into the battery, which can lead to overheating and plate damage.

AUTOMATIC CHARGER / MAINTAINER

Will monitor the voltage constantly during charging and standby modes. When battery voltage reaches a specified low level, the charger / maintainer then delivers a full charge. Once battery is fully charged it automatically drops to a float charge.

STATE-OF-CHARGE BY BATTERY TYPE		
	CONVENTIONAL	AGM
STATE-OF-CHARGE %		
100%	>12.6V	>12.8V
75%	12.4-12.6V	12.5-12.8V
50%	12.1-12.4V	12.0-12.5V
25%	11.9-12.1V	11.5-12.0V
BELOW 25%	<11.9V	<11.5V

WARNING!

1. DO NOT USE AUTOMOTIVE CHARGER.
2. DO NOT EXCEED CHARGING GUIDELINES.
3. WAIT AT LEAST 1 HOUR AFTER REMOVING CHARGER TO MEASURE VOLTAGE.

WINTER STORAGE

- Clean battery case and terminals with baking soda and water.
- Fully charge battery before storing.
- Store in a cool, dry location (keep away from furnace or other heat source.)
- Check voltage every 45-60 days and charge if needed.

BENEFITS OF CHARGING AFTER ADDING ACID

Helps ensure maximum state of charge is available when newly installed in the vehicle. Improves starting capacity and potentially longer service life.

Provides improved shelf-life if the battery is not immediately placed into service. Reduces the incidence of deep discharge and subsequent early warranty returns.

Ensures that the electrolyte levels can be properly adjusted (fill levels) before the battery is placed into service (Conventional types).

Enables more complete absorption of electrolyte into the plates and separator material. Ensures improved capacity, longer service life, and reduces the possibility of electrolyte leakage (AGM types).



KEY POINTS TO REMEMBER

- Powersports batteries are unique and need additional care and maintenance.
- Make sure the correct battery is selected.
- Initial activation is critical. Allow time for electrolyte to absorb into separators and lead plates before charging.
- Once activated and charged, check voltage every 90 days and charge if necessary. More often in high temperature environments.
- All batteries self-discharge. Approximately 1% per day at 27°C. For every 10°C rise in temperature the self-discharge rate doubles.
- Lead acid batteries are still the preferred Powersports battery by OEMs worldwide.

